

BRICKWORKS

PROPERTY BROCHURE

⋮

Hornsey Rise
Crouch End, 2 Bed. Flat
£800,000

BRICKWORKS
Hornsey Rise
Crouch End, 2 Bed. Flat
£800,000



Within a grand building in Crouch Hill, this two-bedroom raised ground-floor flat has been completely redesigned for modern living, inside and out.

BRICKWORKS

Hornsey Rise

Crouch End, 2 Bed. Flat

£800,000



- Type: Raised ground floor garden flat within a converted Victorian townhouse (share of freehold)
- Beds: Two double bedrooms
- Baths: Two bathrooms, including an ensuite
- Living: Open-plan living & kitchen
- Garden: Spacious (11.8m x 5.07 meters), private garden with outside dining area & studio
- Love: The 3-meter-high ceilings in the living room bring grandeur & light to this beautiful space
- Parks: The flat overlooks Elthorne Park, but you are close to the Parkland Walk, Finsbury Park & Waterlow. The Heath is also within comfortable reach.
- Transport: Crouch Hill (0.3 miles), Archway (0.6 miles) & Finsbury Park Underground (1.1 miles)
- Size: 80.05 sq. m / 862 sq. ft
- Chain: The owners are actively looking

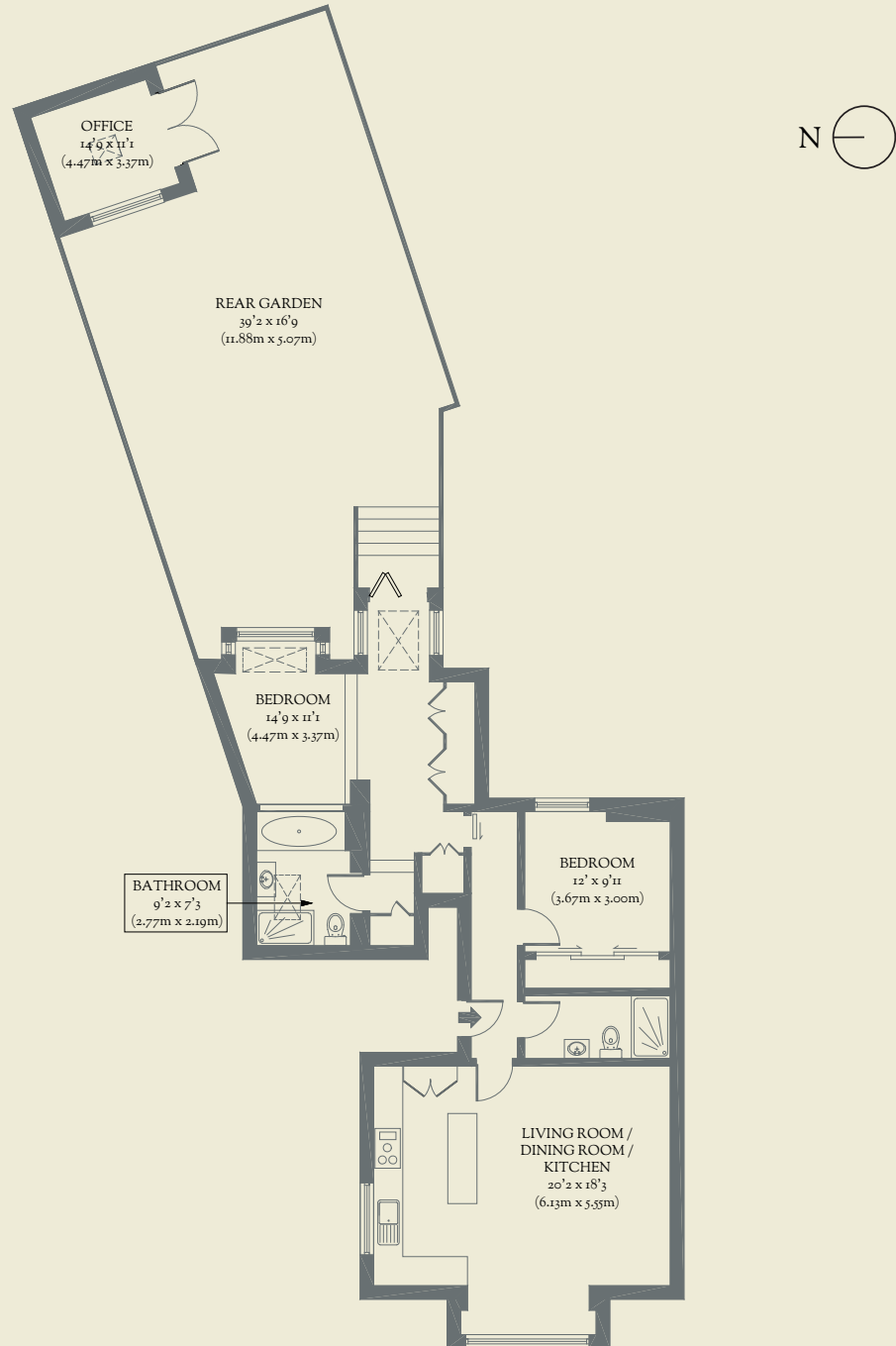
BRICKWORKS
Hornsey Rise
Crouch End, 2 Bed. Flat
£800,000



BRICKWORKS Floorplans

Approximate Floor Area:
80.05 sq m / 862 sq ft

RAISED GROUND FLOOR



Hornsey Rise
Crouch End, 2 Bed. Flat
£800,000