

---

**Seaford Road, N15**  
Guide price £725,000

---



**A reimagined two (and a half) bedroom Victorian treasure near Seven Sisters, where timeless appeal meets a mid-century modern vibe.**

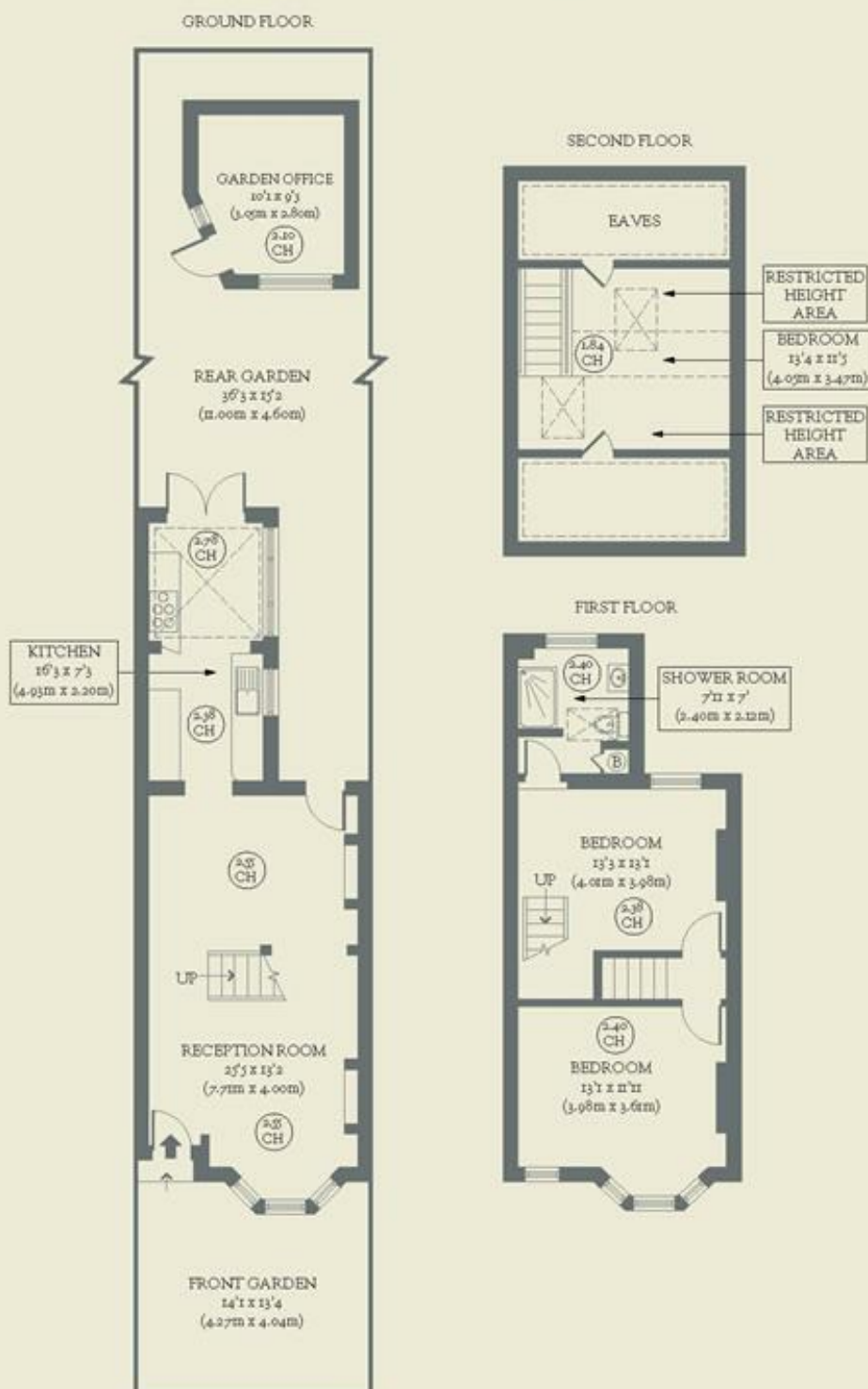
- Type: Victorian terraced house
- Beds: Three bedrooms
- Baths: One bathroom
- Living: Double reception room plus separate kitchen
- Garden: Paved with mature-planted borders (36'3 x 15'2 ft)
- Love: The exposed brick walls on the top floor epitomise loft-space living
- Parks: Chestnuts Park, Marksfield Park, Downhills Park & Lordship Rec are all nearby
- Transport: Seven Sisters (0.3 miles), South Tottenham (0.5 miles), Stamford Hill (0.7 miles) are the closest stations
- Size: 1,11.31 sq m / 1198 sq ft (Including Restricted Height Area, Eaves & Garden Office)
- Chain: The owners need to find & are actively looking

# BRICKWORKS

Approximate Floor Area:

III.31 sq m / 1198 sq ft (Including Restricted Height Area, Eaves & Garden Office)

80.14 sq m / 863 sq ft (Excluding Restricted Height Area, Eaves & Garden Office)



Seafood Road  
Tottenham