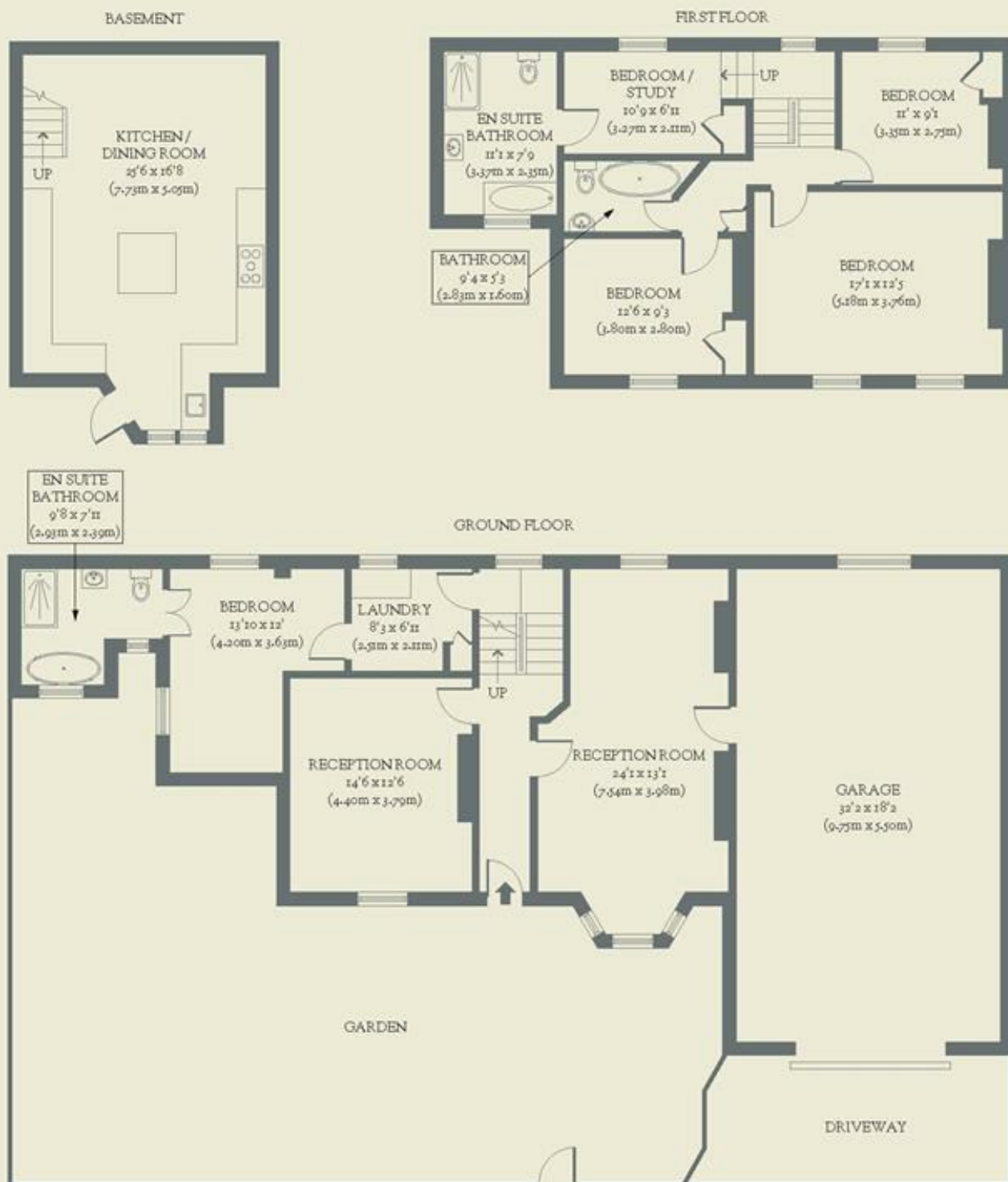

Booth Place, CT9
Guide price £730,000



The Blue House is a wonderfully idiosyncratic five-bedroom detached house. Set within the seaside district of Cliftonville in Margate, a neighbourhood often rated as one of the best places to live in the UK, it's a home brimming with character, theatre, and humour.

BRICKWORKS

Approximate Floor Area:
233.6 sq m / 2514 sq ft (Including Garage)



Booth Place
Cliftonville