

---

**Ashley Road, N19**  
Guide price £1,295,000

---

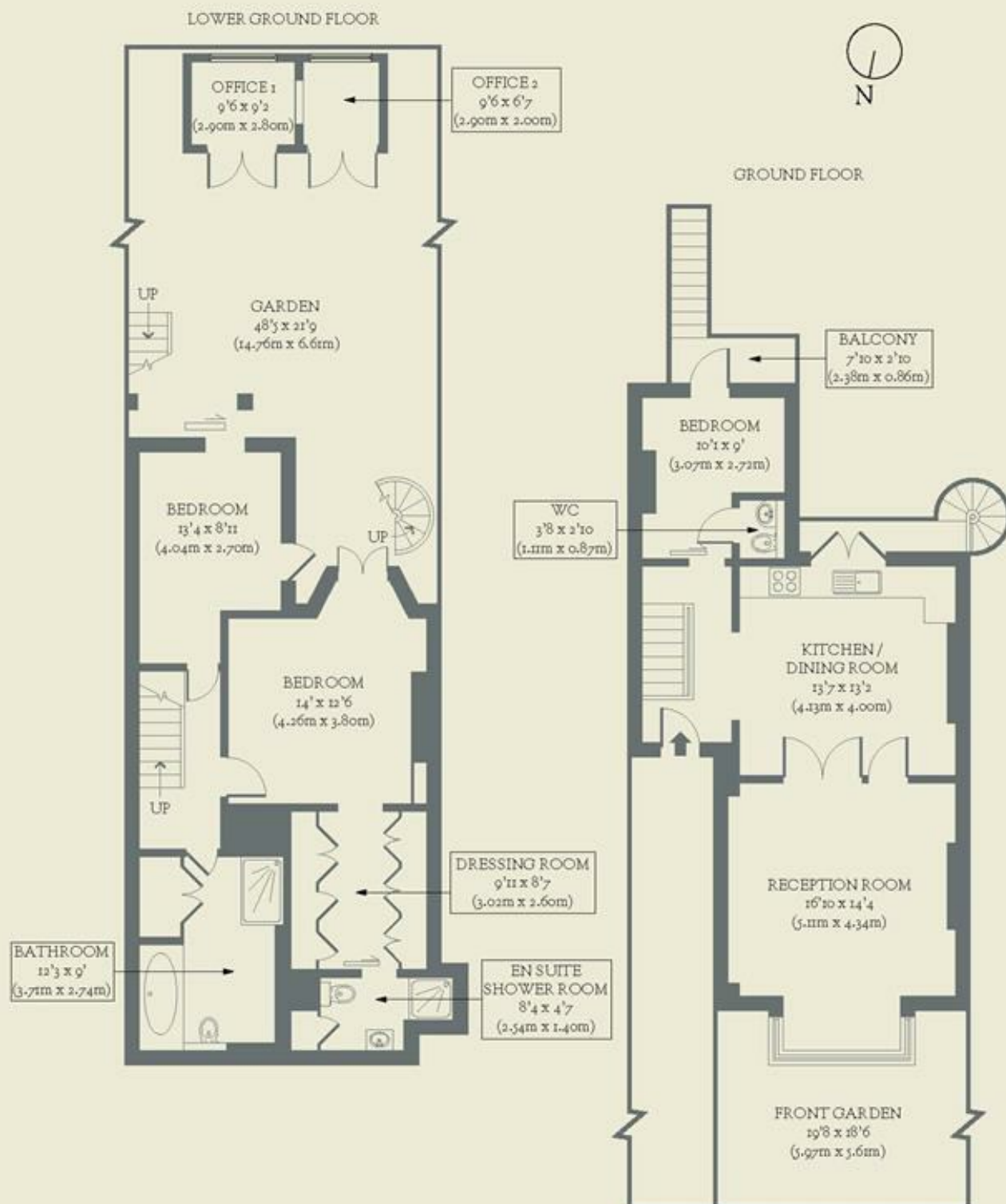


**This exceptional three-bedroom home, sitting on a picturesque street nestled between Crouch End and Stroud Green has been sensitively restored, lovingly designed, and has a wonderful garden studio. It's an absolute gem.**

- Type: Victorian conversion with private garden
- Beds: Three bedrooms & two work studios
- Baths: Two (main bathroom plus ensuite)
- Living: Open-plan living room & kitchen
- Tenure: Share of freehold
- Love: Having access to the garden from both levels
- Parks: Between Waterlow Park & Finsbury Park & moments from the Parkland Walk
- Transport: Crouch Hill, Finsbury Park & Archway are all under a mile away on foot
- Size: Total: 1,376 sq ft / 127.7 sq m. Internal: 1,227 sq ft / 113.90 sq m + Outhouse 149 sq ft / 13.8 sq m
- Chain: The flat is being sold chain-free

# BRICKWORKS

Approximate Floor Area:  
Internal Area: 113.9 sq m / 1227 sq ft  
Outbuildings: 13.8 sq m / 149 sq ft  
Total: 127.7 sq m / 1376 sq ft



Ashley Road  
Crouch End