
First Avenue, EN1
Guide price £950,000



This beautiful Victorian semi-detached home in Bush Hill Park offers four double bedrooms and space to grow in a leafy pocket of London renowned for its urban convenience yet gentler pace of life.

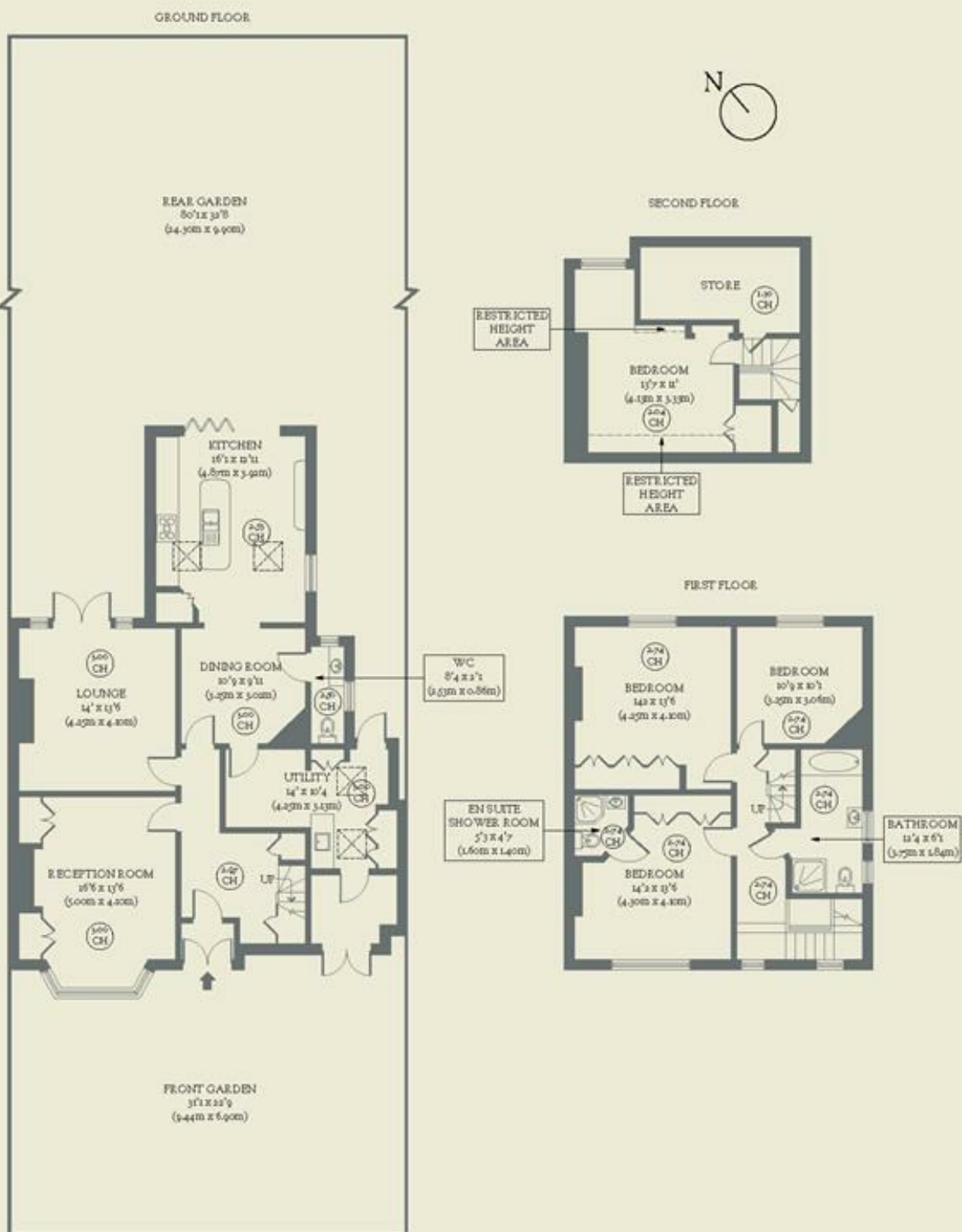
- Type: Victorian semi-detached house
- Beds: Four double bedrooms
- Baths: One main bathroom, one en-suite & downstairs WC
- Living: Reception room, lounge, eat-in kitchen, plus utility.
- Garden: Paved patio at the front providing off-street parking plus large, mature rear garden (80.1 x 32.8 ft)
- Love: The sense of community in the settled, village-like atmosphere of Bush Hill Park
- Parks: Bush Hill Park, Forty Hall Park, Grovelands Park, Town Park, Broomfield Park are all nearby
- Transport: Bush Hill Park (Weaver line, Z5)
- Size: 196.05 sq m / 2,110 sq ft
- Chain: The owner is downsizing and actively looking for a new home

BRICKWORKS

Approximate Floor Area:

196.05 sq m / 2110 sq ft (Including Restricted Height Area & Store)

184.52 sq m / 1986 sq ft (Excluding Restricted Height Area & Store)



First Avenue
Enfield