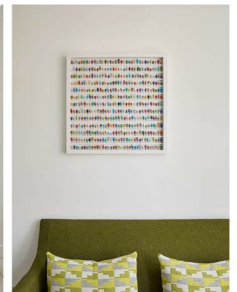

Clarence Road, N15
Guide price £825,000



On a peaceful street, seconds from Chestnuts Park, this beautifully renovated four-bedroom house in South Tottenham offers a bright, flexible layout and a slam dunk south-east facing garden.

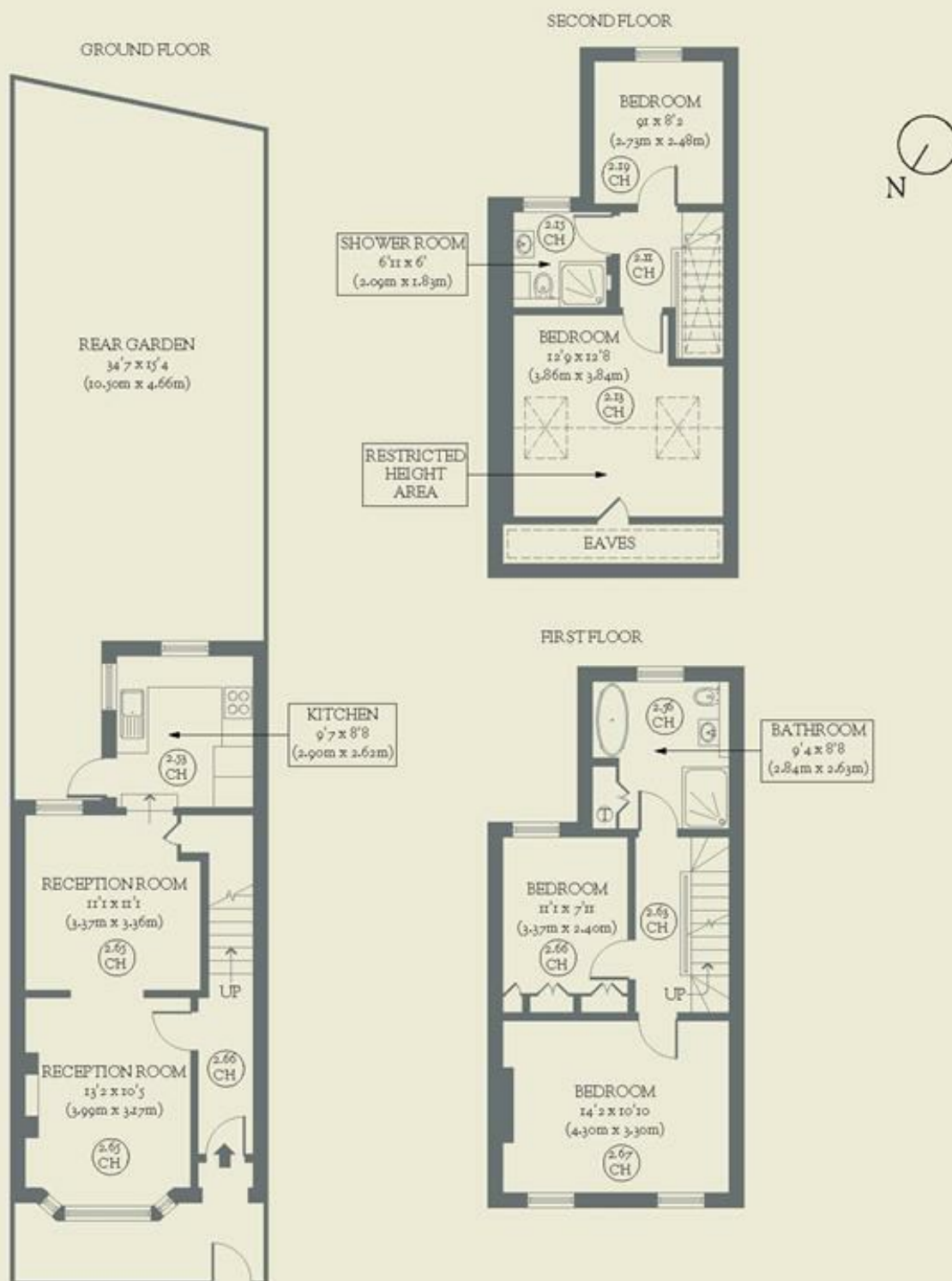
- Type: Victorian terraced house
- Beds: Four (three double & one single)
- Baths: Two (one bathroom & one shower room)
- Living: Two reception rooms, linked by an open archway leading to the kitchen
- Garden: South-east facing rear garden with lawn, raised planted & a patio area large enough to eat & entertain
- Love: The crisp contemporary vibe behind those characterful Victorian bricks
- Parks: Chestnuts Park, Downhills Park & Lordship Recreation Ground are all nearby.
- Transport: Seven Sisters (Victoria line, Z3) & Harringay Green Lanes (Suffragette line, Z3) are the closest stations
- Size: 112.47 sq m / 1,211 sq ft (Including Restricted Height Area & Eaves)
- Chain: Owners are actively looking for their next home

BRICKWORKS

Approximate Floor Area:

112.47 sq m / 1211 sq ft (Including Restricted Height Area & Eaves)

101.44 sq m / 1092 sq ft (Excluding Restricted Height Area & Eaves)



Clarence Road
Tottenham