
Liverpool Road, N1
Guide price £675,000



Contemporary and calm, this recently refurbished one-bedroom flat offers a haven-like hideaway amidst Islington's buzz, with a secluded split-level garden that's all your own.

- Type: Flat in a modern development with private split-level garden
- Beds: One double
- Baths: One
- Living: Open-plan living room & kitchen
- Tenure: Leasehold
- Love: The environmentally friendly heat pump, which maintains a constant temperature throughout the year.
- Parks: Gibson Square, Milner Square, Barnard Park & Highbury Fields are all nearby.
- Transport: Highbury & Islington & Angel are the closest stations.
- Size: 56.89 sq m / 612 sq ft
- Chain: The flat is being sold chain-free.

BRICKWORKS

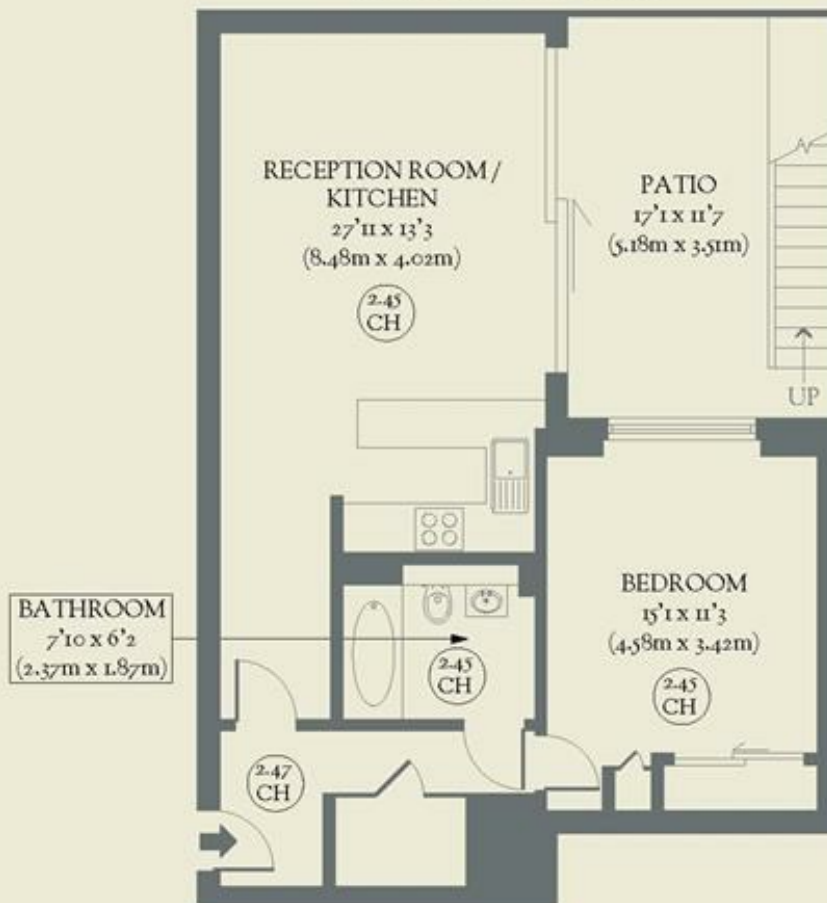
Approximate Floor Area:
56.89 sq m / 612 sq ft



GROUND FLOOR



LOWER GROUND FLOOR



Liverpool Road
Islington