
Elm Grove, N8
Offers in excess of £1,000,000

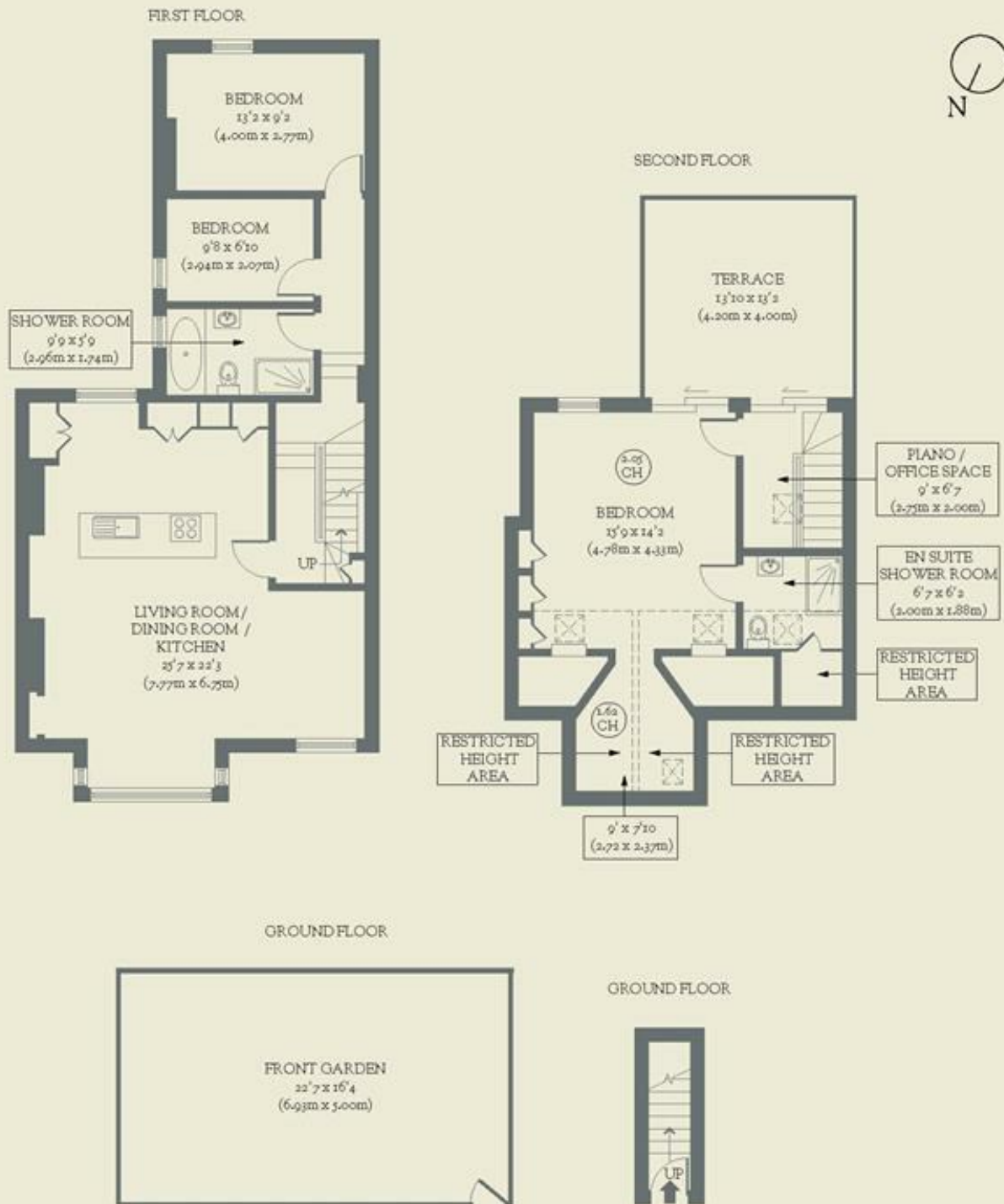


Designed with care and a stylish eye, this three-bedroom flat in Crouch End has a spectacular roof terrace and views overlooking Alexandra Palace. The level of attention to detail makes it altogether quite exceptional.

- Type: First and second floor apartment with large roof terrace
- Beds: Three bedrooms
- Baths: Bathroom plus an ensuite
- Living: Open-plan kitchen & living space
- Tenure: Share of freehold
- Love: The circular windows that echo Alexandra Palace, which you can see from the bedroom window
- Parks: Priory Park, Parkland Walk, Queen's Wood & Highgate Wood are all within easy reach
- Transport: Crouch Hill (0.5 miles), Harringay Green Lanes (1 mile) & Finsbury Park (1.1 miles)
- Size: 121.09 sq m / 1303 sq ft (including restricted height area)
- Chain: The owners are actively looking for their next home.

BRICKWORKS

Approximate Floor Area:
121.09 sq m / 1303 sq ft (Including Restricted Height Area)



Elm Grove
Crouch End