
Louis Close, N7
Guide price £625,000



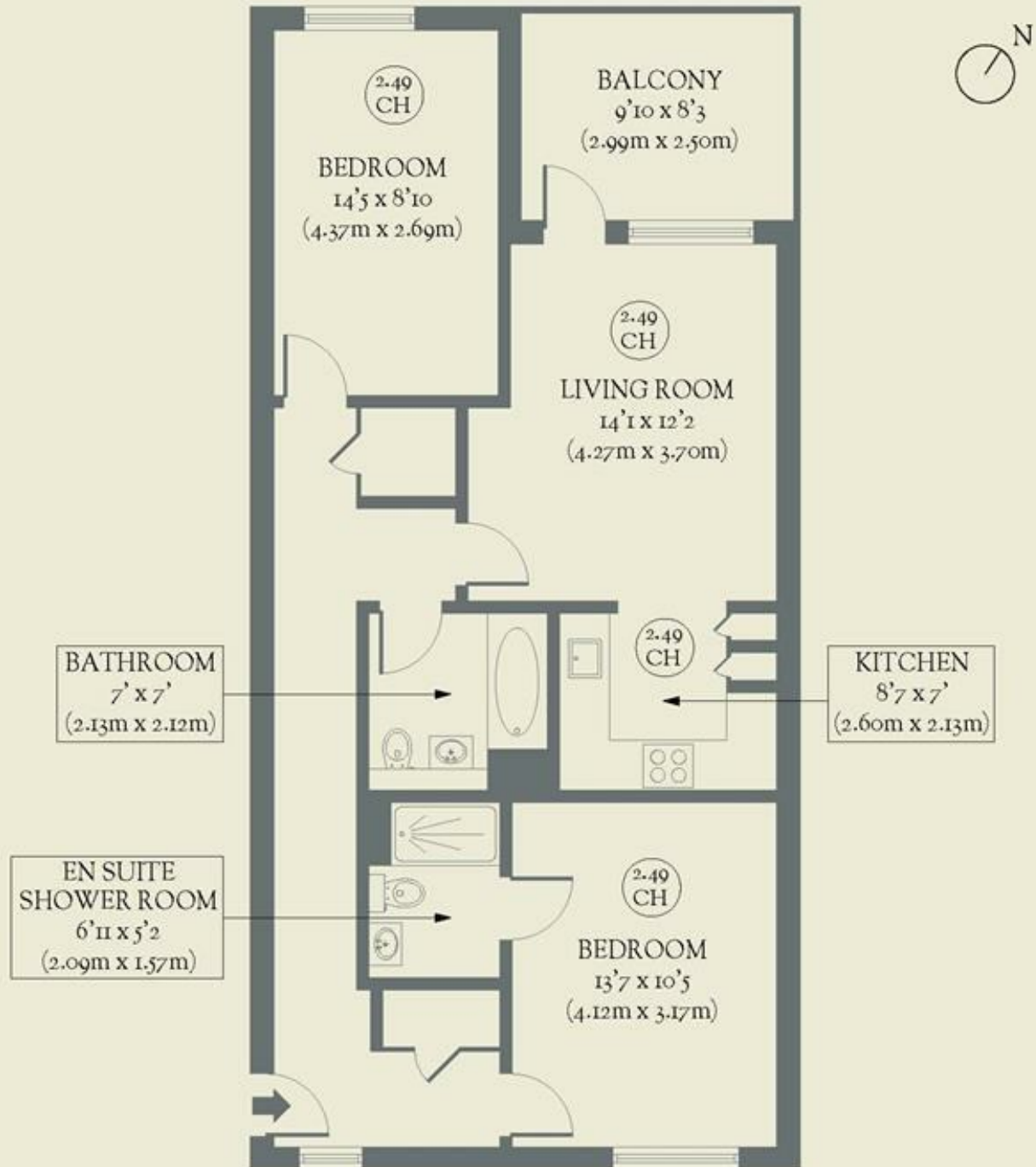
A gorgeous new build bustling with personality and style, this two-bedroom flat with a private balcony in Holloway is the perfect urban retreat.

- Type: Apartment with private balcony in a contemporary block (first floor)
- Beds: Two bedrooms
- Baths: Two bathrooms
- Living: Open-plan kitchen & living space
- Tenure: Leasehold (997 years remaining)
- Love: The playful pops of blue, including the door handle
- Parks: Tufnell Park Playing Fields, Highbury Fields & Hampstead Heath are all within easy reach
- Transport: Holloway Road (0.6 miles), Tufnell Park (0.9 miles) & Upper Holloway (0.8 miles)
- Size: 72.07 sq m / 776 sq ft
- Chain: The owners need to find & are actively looking

BRICKWORKS

Approximate Floor Area:
72.07 sq m / 776 sq ft

FIRST FLOOR



Louis Close
Holloway