

---

**Gladstone Avenue, N22**  
Guide price £650,000

---

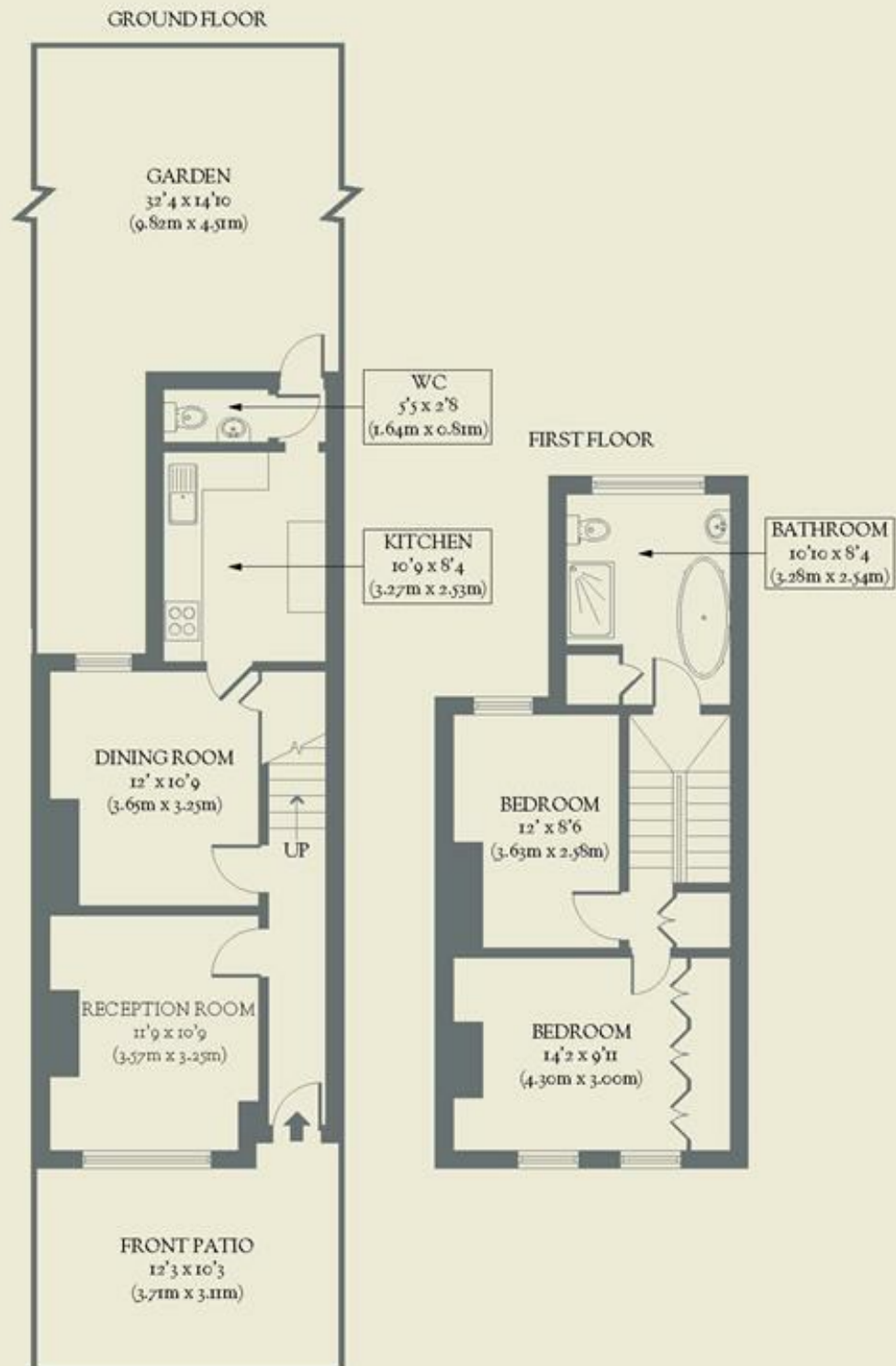


**A home at ease, this two-bedroom house in the Noel Park conservation area has been refreshed to create comforting, harmonious interiors with an ever-so-pretty garden out back.**

- Type: Victorian terraced house
- Beds: Two double bedrooms
- Baths: One upstairs bathroom & downstairs WC
- Living: Separate kitchen & living spaces
- Garden: Mature, beautifully planted & south-east facing
- Love: The garden. Just look at the garden!
- Parks: Russell Park, Lordship Recreation Ground & Downhills Park are both nearby
- Transport: Wood Green Underground (0.6 miles), Turnpike Lane (0.8 miles), & Alexandra Palace (1.1 miles)
- Size: 78.58 sq m / 846 sq ft
- Chain: The house is being sold chain-free

# BRICKWORKS

Approximate Floor Area:  
78.58 sq m / 846 sq ft



Gladstone Avenue  
Noel Park