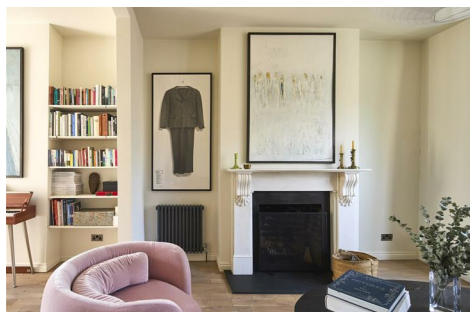

Beaconsfield Road, N15

Guide price £900,000



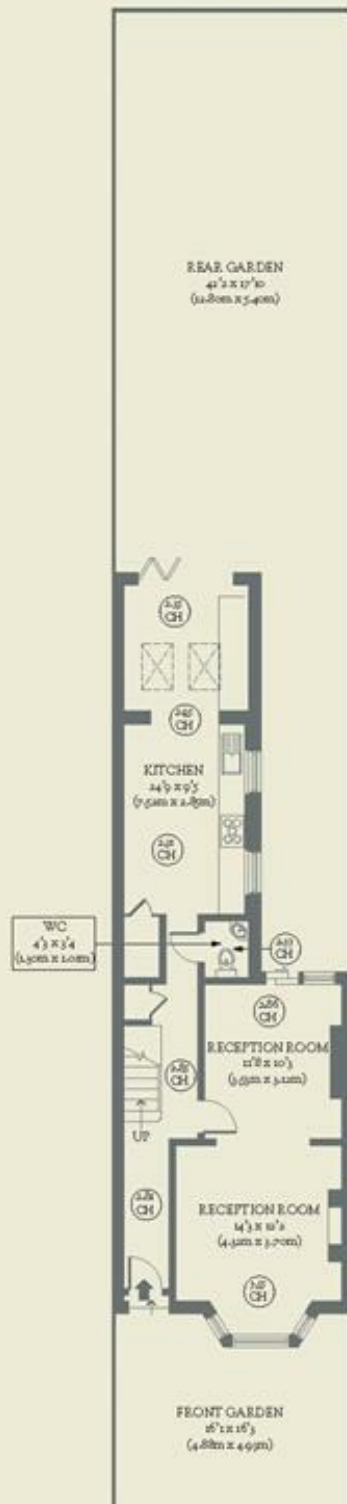
An easy elegance is evident in every corner of this three-bedroom Victorian home in Seven Sisters, where calming interiors are a welcome tonic to busy modern life.

- Type: A charming Victorian terraced house
- Beds: Three double bedrooms with convertible loft bedrooms
- Baths: One bathroom and a downstairs toilet
- Living: Separate eat-in kitchen and living spaces
- Garden: A good-sized, established garden
- Love: We can't resist the herringbone parquet in the kitchen
- Parks: Downhills Park, Chestnuts Park and Markfield Park are all nearby
- Transport: Seven Sisters (0.3 miles), Bruce Grove (0.6 miles) Tottenham Hale (0.8 miles)
- Size: 116.51 sq m / 1254 sq ft
- Chain: The house is being sold chain-free

BRICKWORKS

Approximate Floor Area:
116.51 sq m / 1254 sq ft

GROUND FLOOR



FIRST FLOOR



Beaconsfield Road
Tottenham