
Fulham Road, SW6
Guide price £575,000



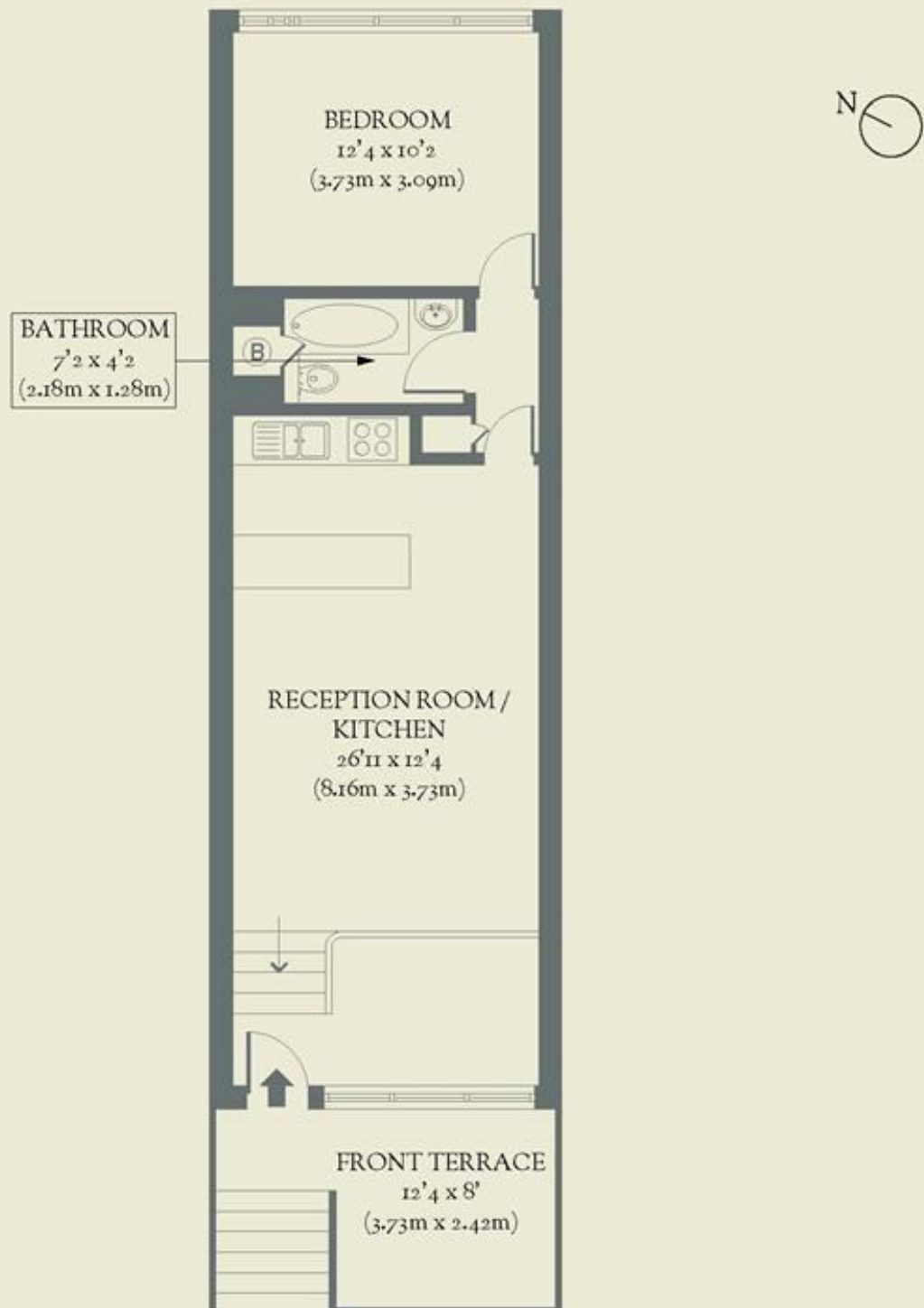
Modern in spirit, this one-bedroom ground-floor flat with a private terrace sits in the heart of Fulham and exemplifies the clean lines and simplicity of midcentury design

- Type: Mid-century apartment with terrace (ground floor)
- Beds: One bedroom
- Baths: One bathroom
- Living: Open plan kitchen & living space
- Tenure: Share of freehold
- Love: The mid-century building & its striking modular design of concrete & glass
- Parks: Eel Brook Common, Hurlingham Park & Bishops Park are all within reach
- Transport: Fulham Broadway (0.2 miles), Imperial Wharf (0.7 miles) & West Brompton (0.8 miles)
- Size: 47.6 sq m / 512 sq ft
- Chain: Being sold chain-free

BRICKWORKS

Approximate Floor Area:
47.6 sq m / 512 sq ft

GROUND FLOOR



Fulham Road
Fulham