

---

**Ellington Road, CT11**  
Guide price £795,000

---

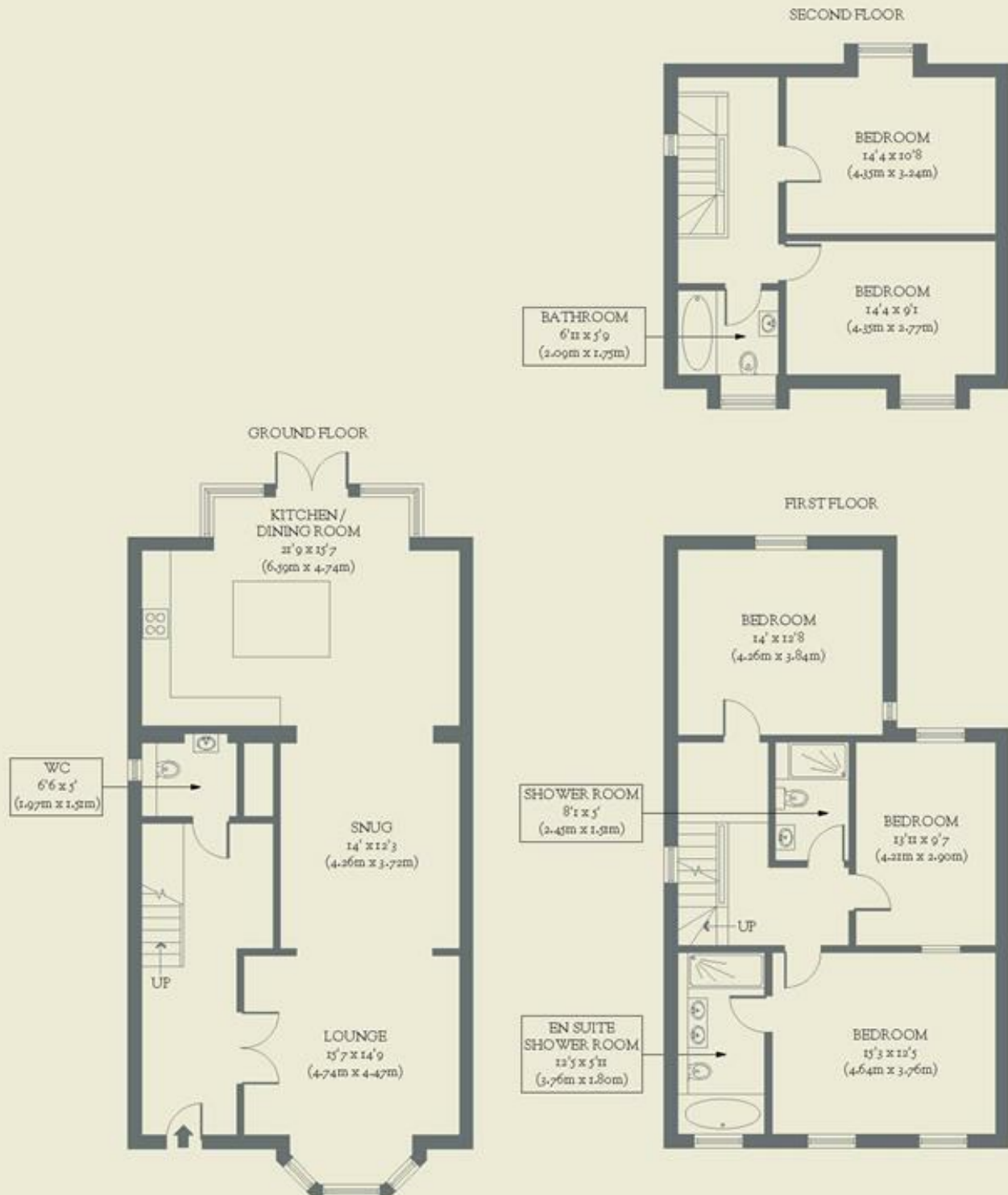


**Consciously designed and impeccably finished, this five-bedroom Victorian-inspired villa in Ramsgate is a stellar example of what can be achieved when you prioritise sustainability and style.**

- Type: New-build Victorian-style semi-detached house
- Beds: Five bedrooms
- Baths: Three bathrooms plus downstairs WC
- Living: Open-plan kitchen & conjoined living spaces
- Garden: Sizeable south-west facing garden with patio for entertaining
- Love: The kitchen island with seating on two sides, provides views of the garden through the beautiful glass extension
- Parks: Ellington Park & Warre Recreation Ground are nearby
- Transport: Ramsgate Train Station (0.5 miles) connects to London St Pancras in 1hr 17min
- Size: 199.07 sq m / 2143 sq ft
- Chain: The house is being sold chain-free

# BRICKWORKS

Approximate Floor Area:  
199.07 sq m / 2143 sq ft



Ellington Road  
Ramsgate