
Keston Road, SE15
Guide price £700,000

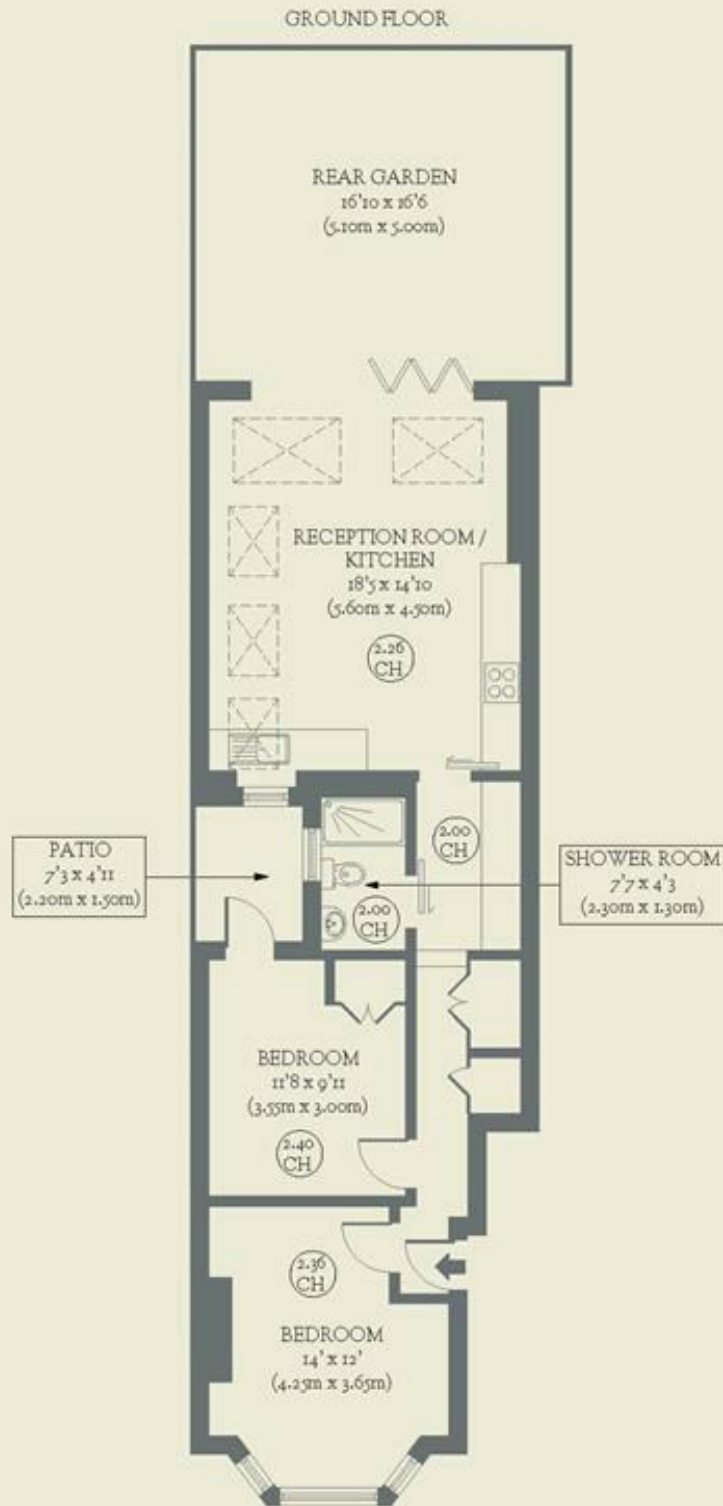


In the sweet spot between East Dulwich and Peckham, this peach of a flat has two bedrooms, two outdoor spaces and aces modern, open-plan living.

- Type: Ground floor, garden-flat
- Beds: Two bedrooms
- Baths: One shower room
- Living: Open-plan kitchen & living space
- Tenure: Share of freehold
- Love: The cocktail area created between rooms is a fabulous use of space
- Parks: Goose Green, Peckham Rye & Dulwich Park are all within easy reach
- Transport: East Dulwich (0.5 miles), Peckham Rye (0.6 miles)
- Size: 66.70 sq m / 718 sq ft
- Chain: The owners need to find their onward property & are actively looking

BRICKWORKS

Approximate Floor Area:
66.70 sq m / 718 sq ft



Keston Road
Peckham