
Highbury Crescent, N5
Guide price £750,000



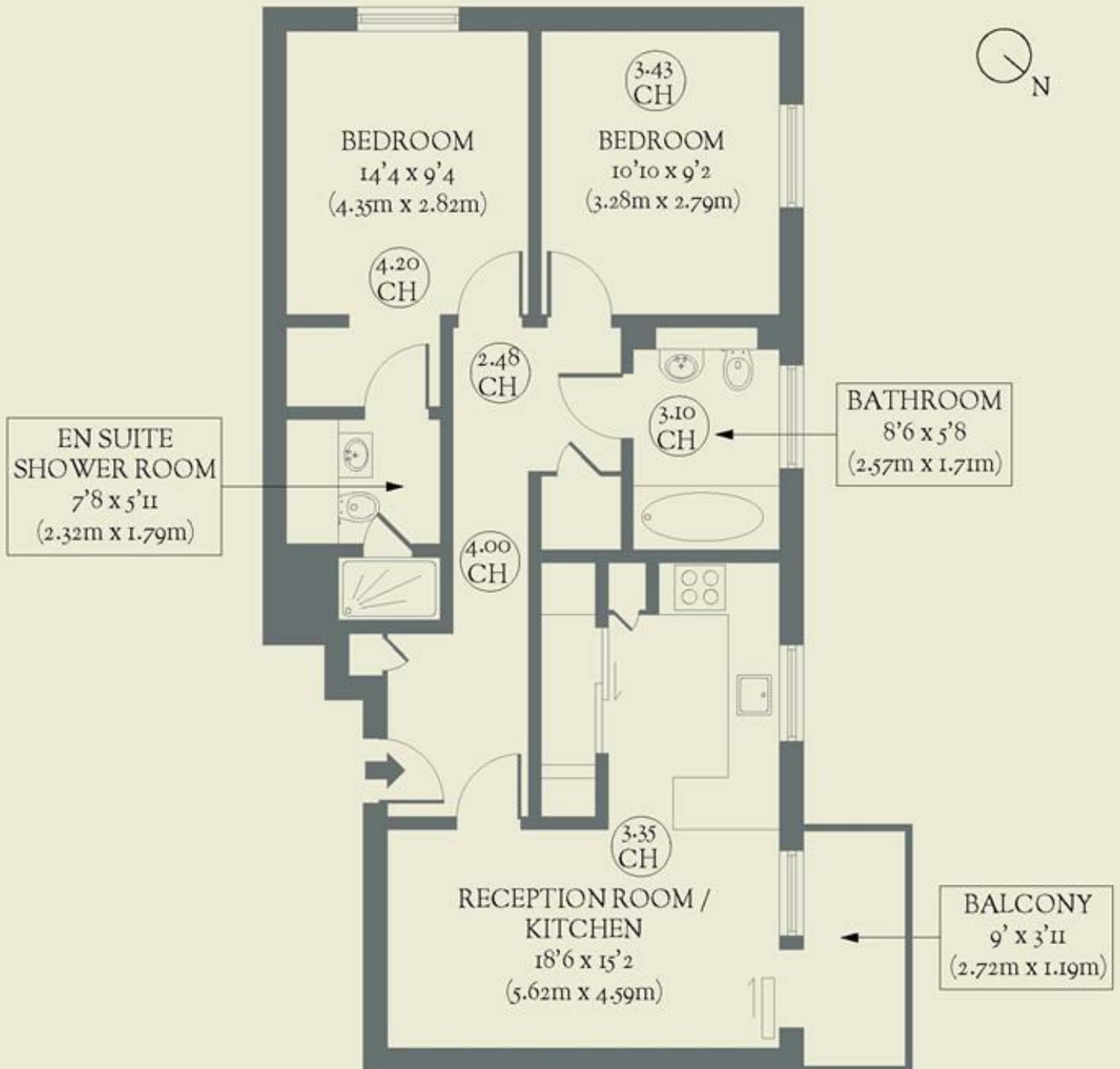
Moments from Highbury Fields, this elegantly designed two-bedroom flat with communal gardens offers both style and convenience in one of London's most coveted neighbourhoods.

- Type: Modern apartment (2nd/top floor)
- Beds: Two bedrooms
- Baths: Bathroom plus ensuite shower room
- Living: Open-plan kitchen & living space
- Tenure: Leasehold (133 years remaining)
- Love: Private off-street parking is a rare inner-city bonus
- Parks: You could not be closer to Highbury Fields, but Paradise Park & Clissold Park are also nearby
- Transport: Highbury & Islington (0.3 miles)
Caledonian Road (0.8 miles)
- Size: 62.32 sq m / 671 sq ft
- Chain: The flat is being sold chain-free

BRICKWORKS

Approximate Floor Area:
64.1 sq m / 691 sq ft

SECOND FLOOR



Highbury Crescent
Highbury