
Cunningham Road, N15
Guide price £825,000

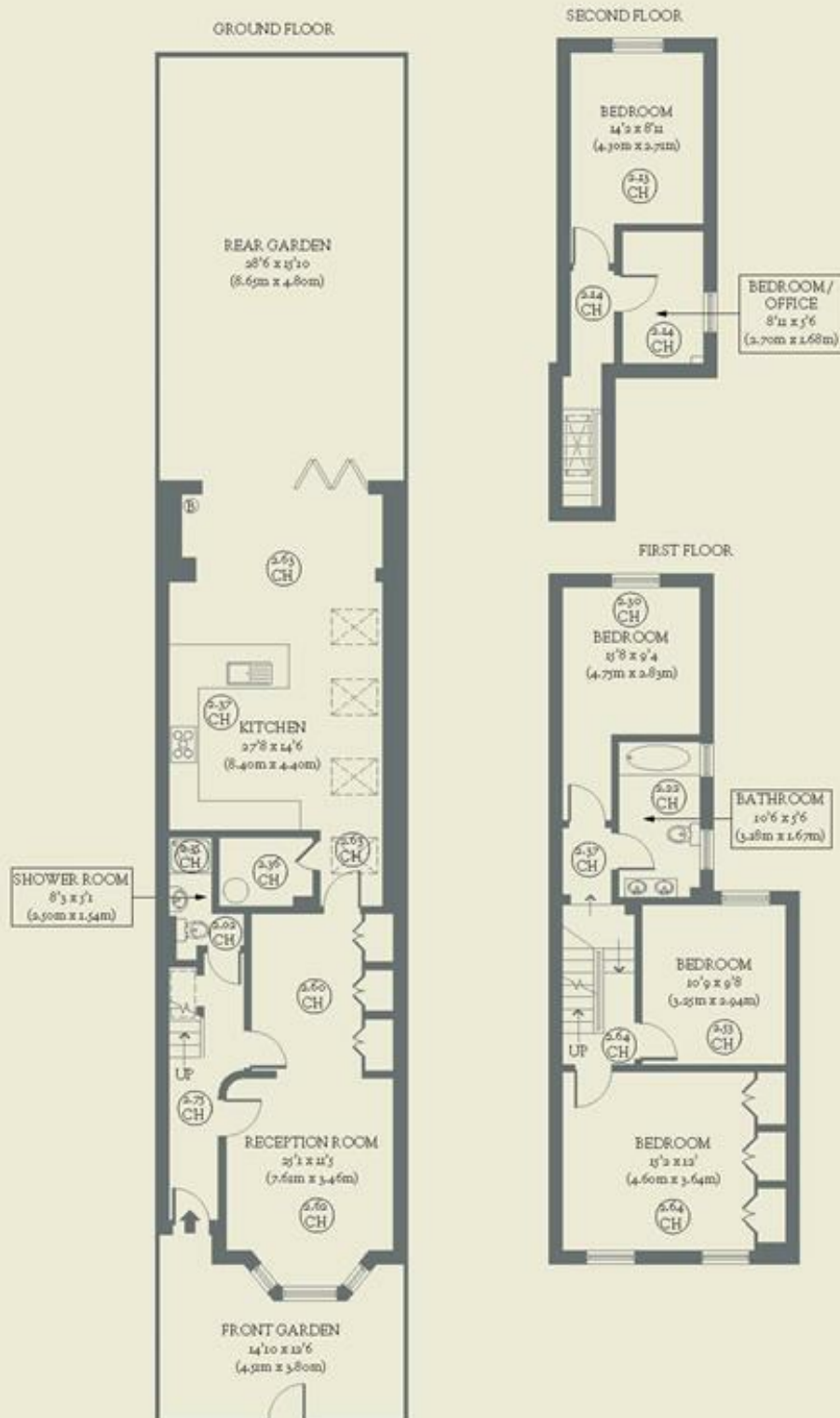


It's impossible not to fall for this four-bedroom Victorian home in Tottenham, bursting with personality and an undeniable sense of joy.

- Type: Victorian terraced house
- Beds: Four bedrooms plus study
- Bath: First-floor bathroom plus downstairs shower room with WC
- Living: Double reception & extended kitchen-diner
- Garden: East-facing garden with raised decking at one end.
- Love: The kitchen extension has transformed the entire downstairs
- Parks: Markfield Park, Downhills Park & Walthamstow Wetlands are all nearby
- Transport: Tottenham Hale (0.5 miles) South Tottenham (0.6 miles)
- Size: 140.54 sq m / 1513 sq ft
- Chain: The owners need to find their onward property & are actively looking

BRICKWORKS

Approximate Floor Area:
140.54 sq m / 1513 sq ft



Cunningham Road
South Tottenham