
Summerhill Road, N15
Guide price £650,000

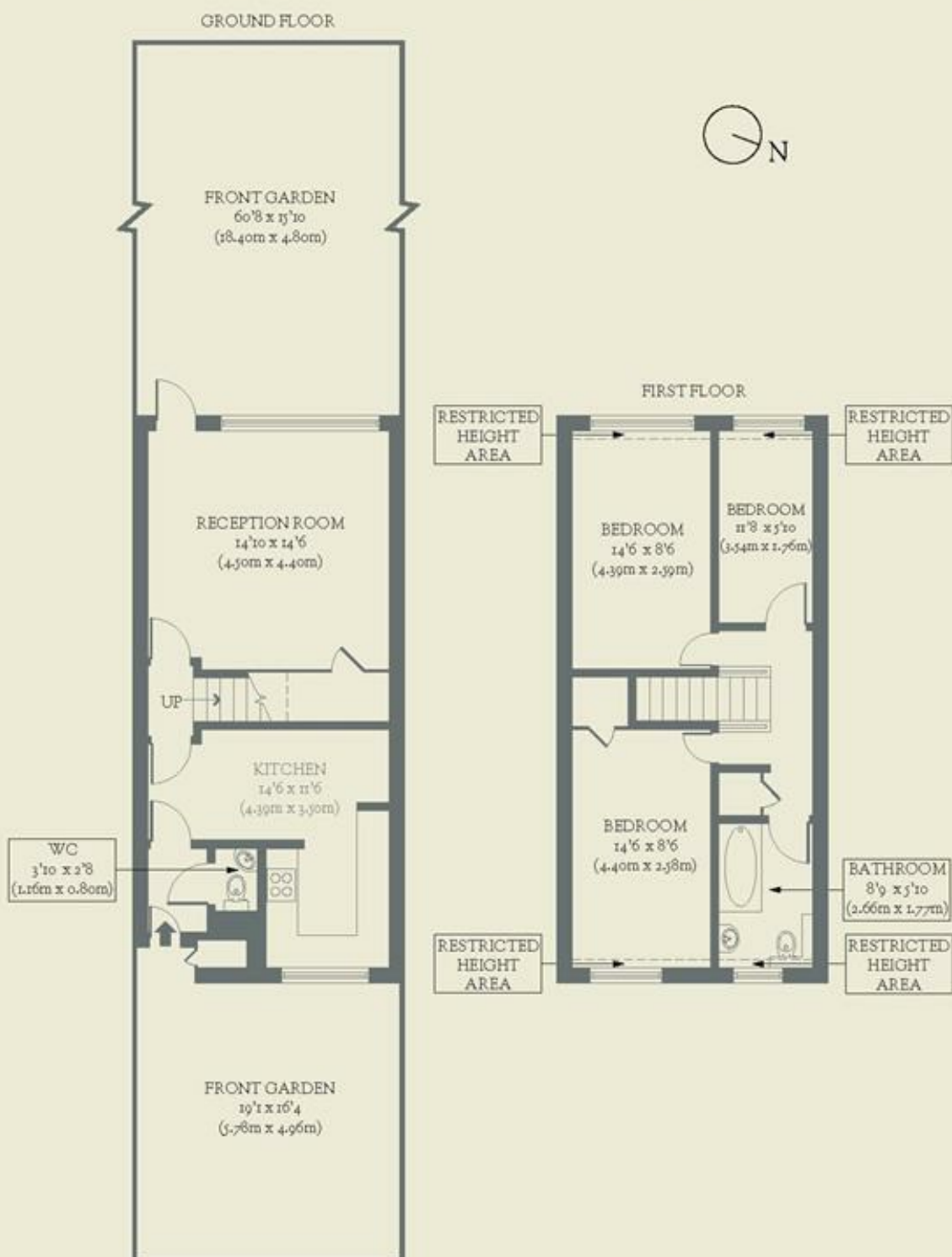


In the heart of resurgent Tottenham, this three-bedroom house has a mid-century feel, with clean lines and a simple yet functional layout. It is a compelling option for anyone needing breathing space or extra room for a growing brood.

- Type: Terraced house
- Beds: Three bedrooms
- Baths: One main bathroom plus downstairs WC
- Living: Eat-in kitchen & separate living room
- Garden: 60" southwest-facing garden
- Love: The location in the heart of all the local good stuff
- Parks: Minutes on foot from Downhills Park & Lordship Rec
- Transport: Closest station: Seven Sisters (0.7 miles)
- Size: 961 sq. ft / 89.28 sq. m (including two tiny areas of restricted height)
- Chain: The owners need to find & are actively looking

BRICKWORKS

Approximate Floor Area:
89.28 sq m / 961 sq ft (Including Restricted Height Area)
87.90 sq m / 946 sq ft (Excluding Restricted Height Area)



Summerhill Road
Tottenham