
Evering Road, E5
Guide price £700,000



Perched on the top floor, this two-bedroom flat with a secret roof terrace offers personality, space, and thoughtful details in one of London's most exciting neighbourhoods.

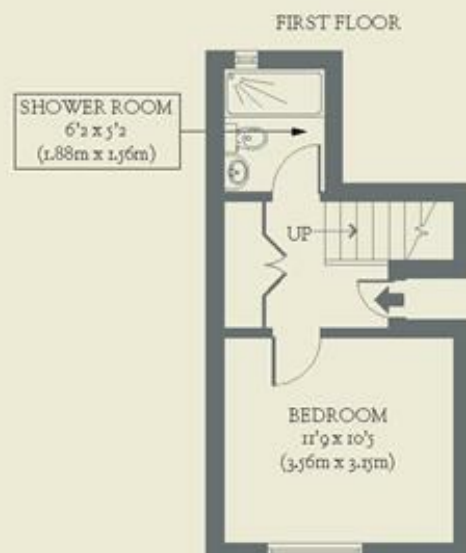
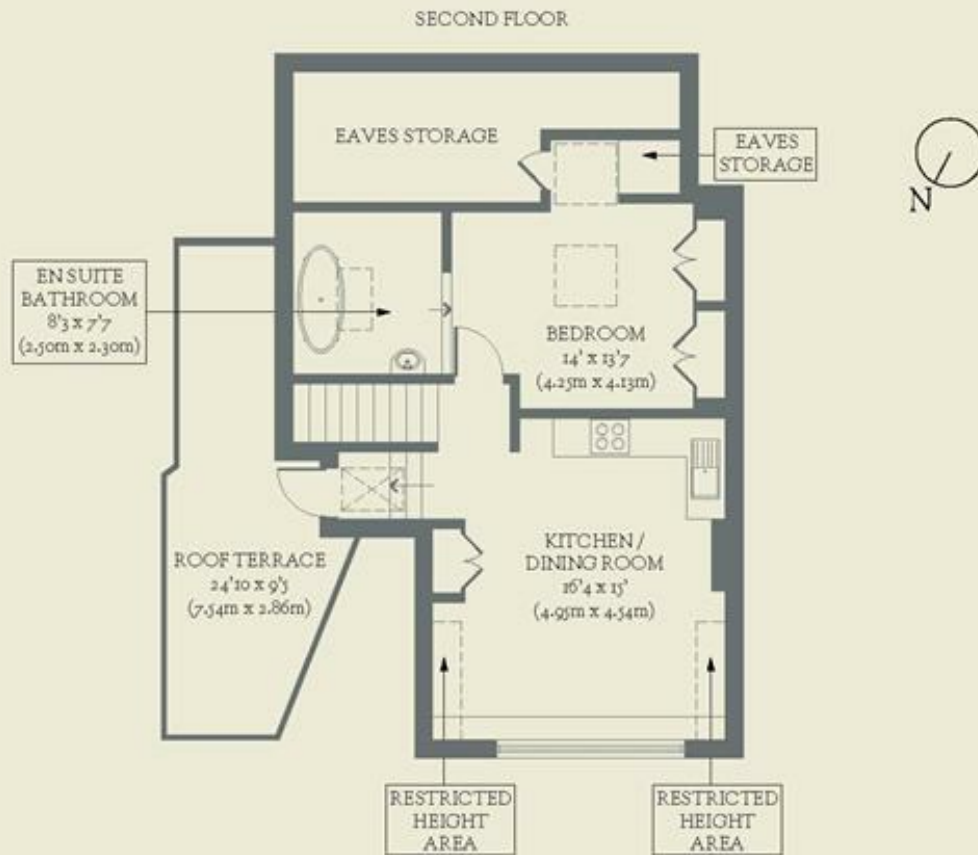
- Type: Flat in Victorian conversion (top floors)
- Beds: Two bedrooms
- Baths: Two (one shower room & one en suite bathroom)
- Living: Open-plan kitchen dining room
- Tenure: Share of freehold
- Love: The roof terrace with treetop views
- Parks: Close to Hackney Downs & Clissold Park
- Transport: The nearest stations are Rectory Road (0.3 miles) & Clapton (0.3 miles)
- Size: 66.66 sq m / 718 sq ft (excluding restricted height & eaves) OR 79.91 sq m / 860 sq ft (including excluding restricted height & eaves)
- Chain: The current owners need to find & are actively looking

BRICKWORKS

Approximate Floor Area:

79.91 sq m / 860 sq ft (Including Restricted Height & Eaves)

66.66 sq m / 718 sq ft (Excluding Restricted Height & Eaves)



Evering Road
Clapton