
29 Tryon Crescent, E9

Guide price £650,000



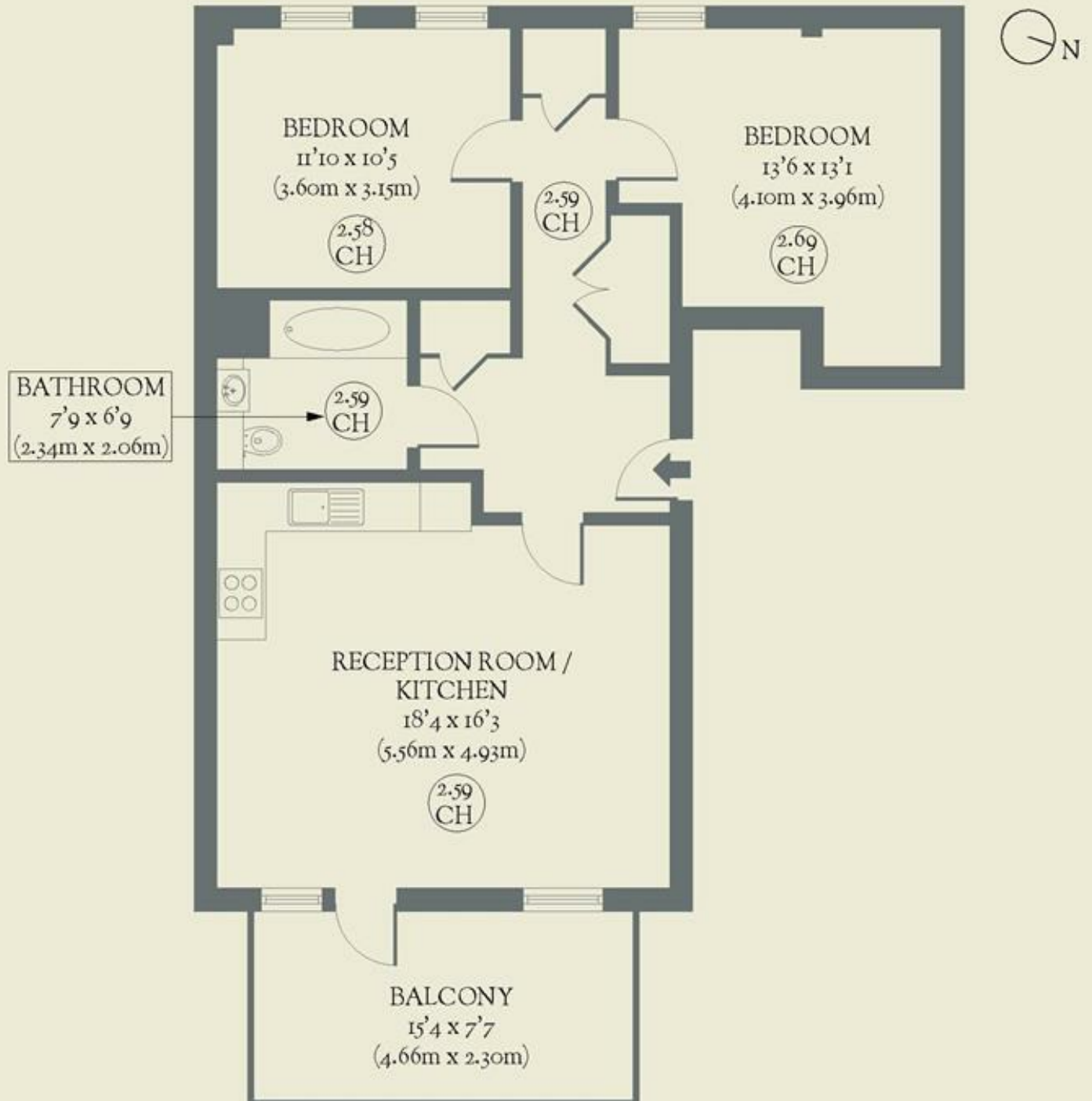
Thoughtful design sets this fresh two-bedroom flat in Hackney apart, with well-proportioned spaces, plentiful storage and an inviting east-facing balcony.

- Type: Flat in a modern apartment block
- Beds: Two double bedrooms
- Baths: One bathroom
- Living: Open-plan kitchen & living space
- Tenure: Leasehold (118 years)
- Love: Being equidistant from two of East London's most iconic parks
- Parks: Victoria Park & London Fields are minutes away on foot
- Transport: London Fields (0.4 miles)
Bethnal Green Underground (0.9 miles)
- Size: 70.34 sq m / 757 sq ft
- Chain: The flat is being sold chain-free

BRICKWORKS

Approximate Floor Area:
70.34 sq m / 757 sq ft

FIRST FLOOR



Tryon Crescent
Hackney