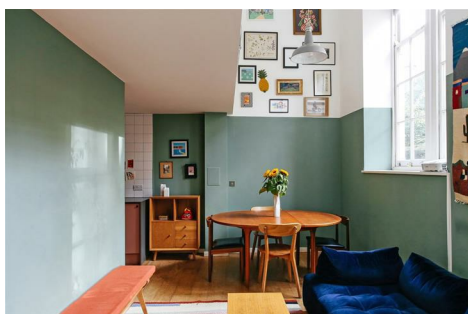

Augustas Lane, N1

Guide price £649,000

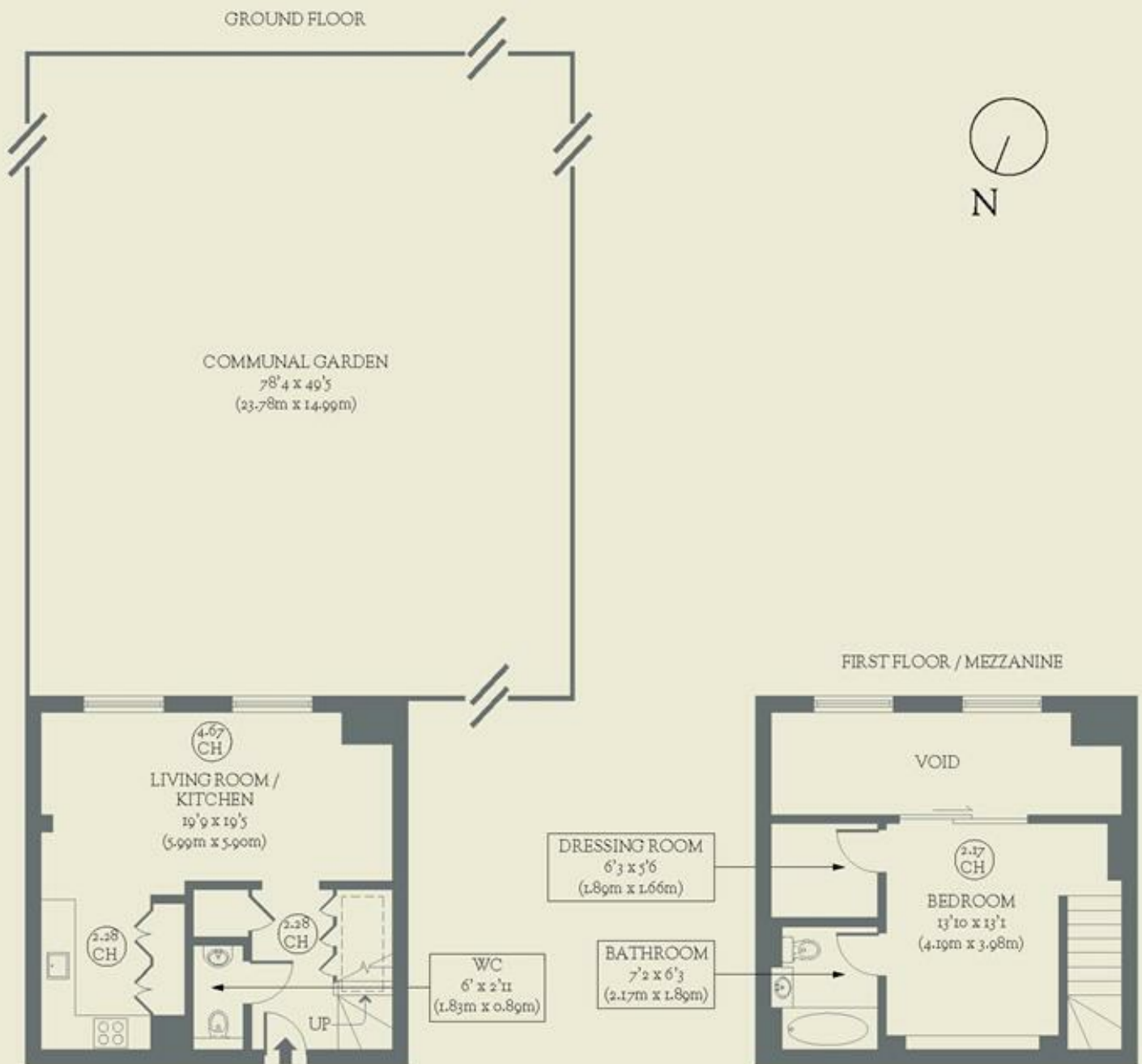


The architectural elements of this former school building in Islington, including double-height ceilings, make this one-bedroom split-level flat stand out for all the right reasons.

- Type: Split-level flat in a Victorian school conversion
- Beds: One bedroom
- Baths: One bathroom & downstairs WC
- Living: Open-plan kitchen & living space
- Tenure: Leasehold (236 years remaining)
- Love: The entrance hall or the library wall; we can't decide which we like the most
- Parks: Paradise Park, Highbury Fields & Clissold Park are all within easy reach
- Transport: Caledonian Road & Barnsbury (0.4 miles), Highbury & Islington (0.5 miles) & Caledonian Road (0.7 miles)
- Size: 61.79 sq m / 665 sq ft
- Chain: The flat is being sold chain-free

BRICKWORKS

Approximate Floor Area:
61.79 sq m / 665 sq ft



Augustas Lane
Islington