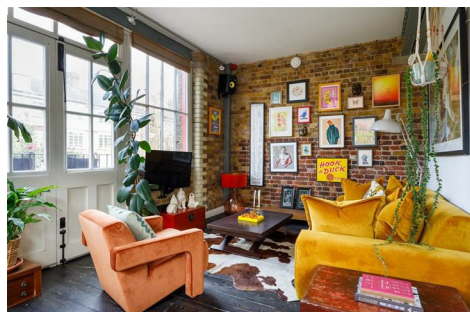

Academy Buildings, Fanshaw Street, N1
Guide price £850,000



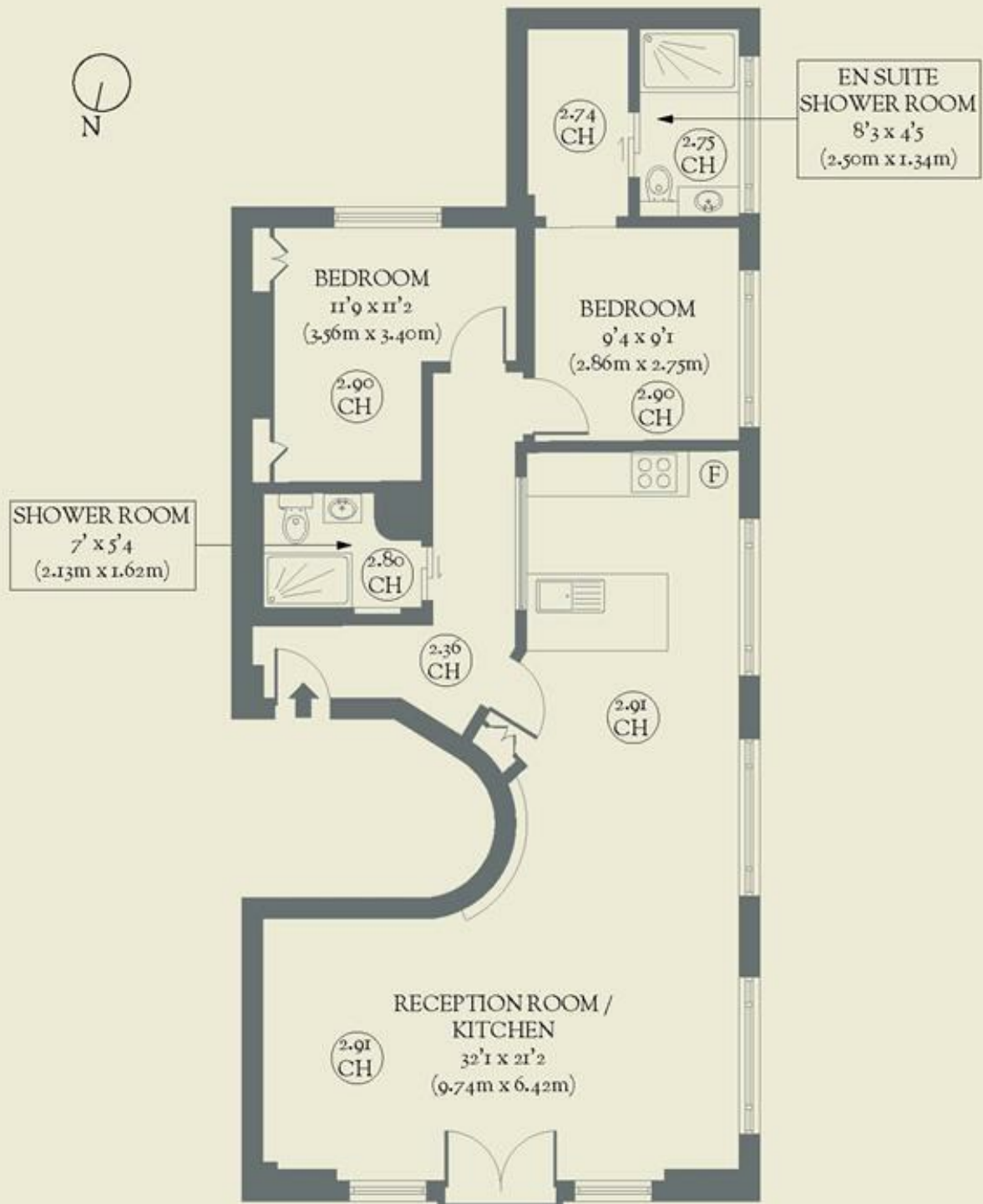
With lofty proportions and expansive windows that flood the internal spaces in light, there's much to lust after in this eclectic two-bedroom flat in the heart of Hoxton.

- Type: Victorian, warehouse conversion (first-floor)
- Beds: Two double bedrooms
- Baths: Two bathrooms
- Living: One enormous open-plan living, dining & kitchen space
- Love: The original red-framed windows & vertiginously high ceilings
- Parks: Moments from Hoxton Square, close to Shoreditch Park & Haggerston Park
- Transport: Hoxton (0.4 miles), Old Street (0.5 miles), Shoreditch High Street (0.7 miles)
- Tenure: Share of Freehold
- Size: 81.22 sq m / 874 sq ft
- Chain: Owners need to find & are actively looking

BRICKWORKS

Approximate Floor Area:
81.22 sq m / 874 sq ft

FIRST FLOOR



Fanshaw Street
Hoxton