

---

**Wandsworth Road, SW8**  
£500,000

---

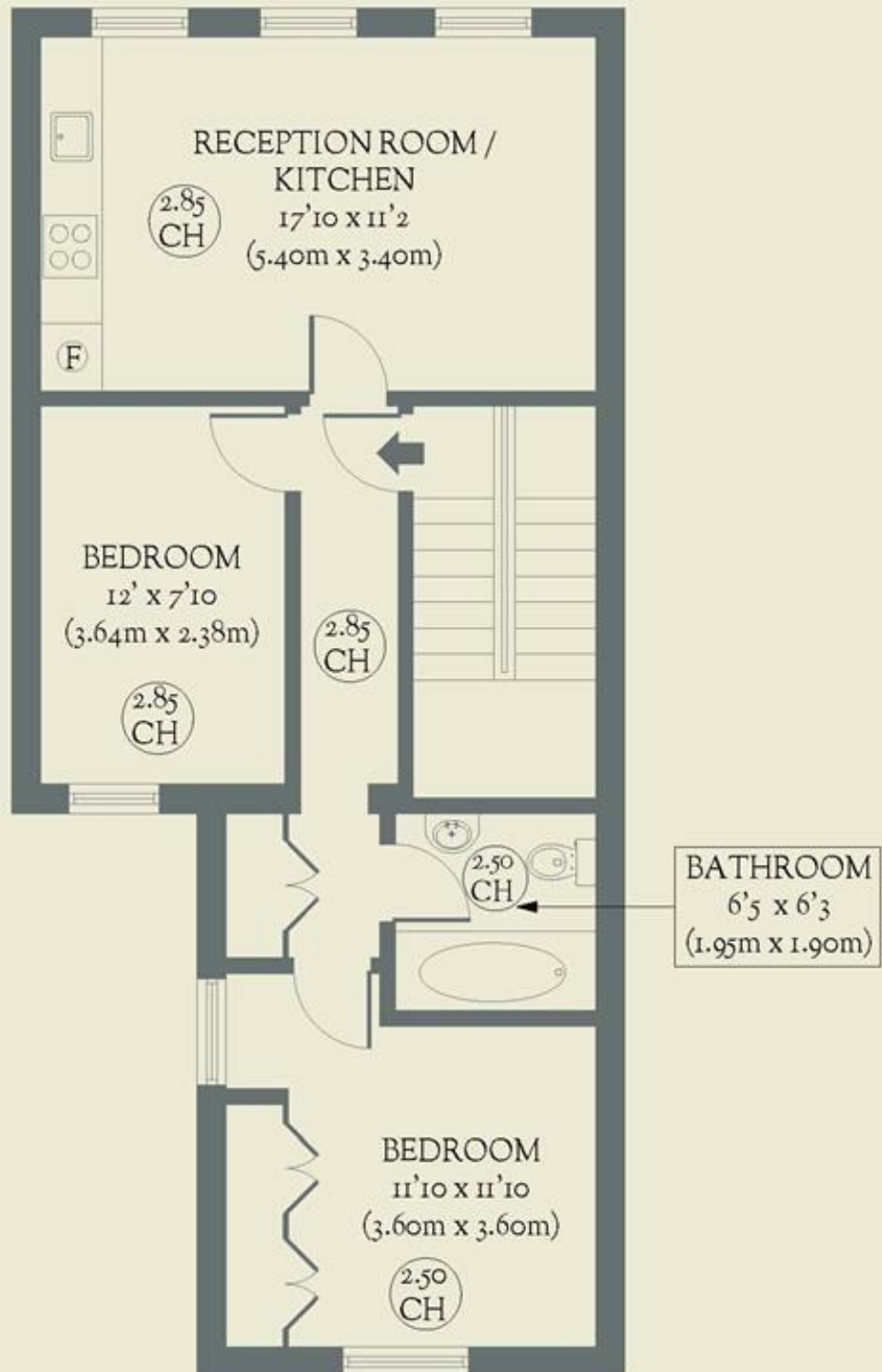


**Within sight of Battersea Power Station and Park, this two-bedroom flat's simple style and central location create a pleasing combination.**

- Type: First-floor Victorian conversion
- Beds: Two double bedrooms
- Baths: One bathroom
- Living: Open-plan kitchen & living space
- Tenure: Leasehold (116 years)
- Love: The three windows in the living room bathe the room in natural light
- Parks: Larkhall Park & Battersea Park are both within easy reach
- Transport: Nine Elms Underground (0.2 miles) Wandsworth Road Overground (0.6 miles)
- Size: 50.46 sq. m / 543 sq. ft
- Chain: Being sold chain-free

# BRICKWORKS

Approximate Floor Area:  
50.46 sq m / 543 sq ft



Wandsworth Road  
*Nine Elms*