
Church Street, TW7
Guide price £1,175,000

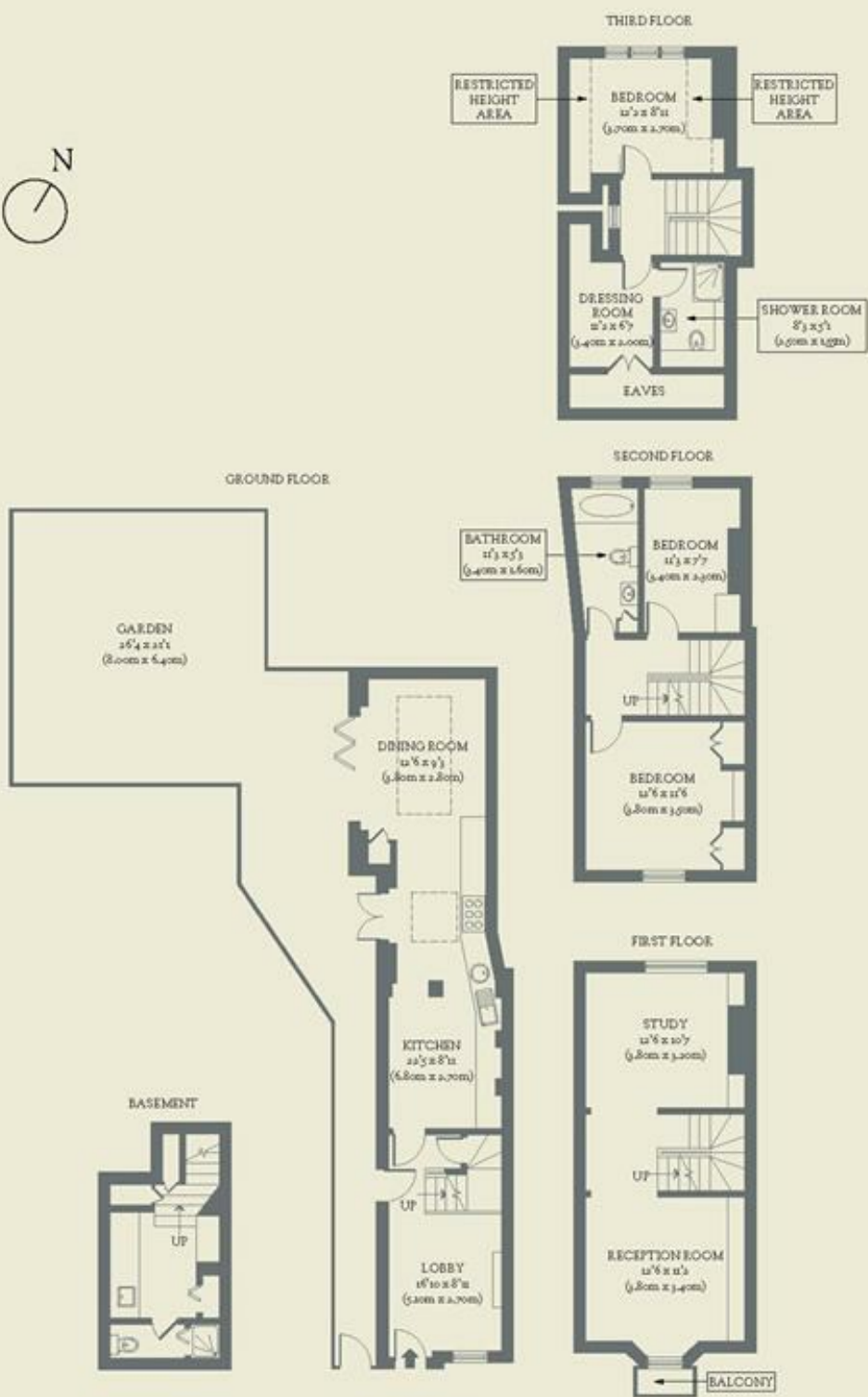


Steeped in history and timeless character, this three-bedroom Georgian townhouse at the edge of the Thames blends eras beautifully.

- Type: Georgian townhouse
- Beds: Three bedrooms plus dressing room
- Bath: Two bathrooms (including an ensuite) plus WC
- Living: Reception room, study, lobby, extended eat-in kitchen plus utility
- Garden: Charming walled garden with side access to the street
- Love: The proportions of Georgian homes, inside and out, are magical
- Parks: Syon Park & Kew Gardens are nearby. Richmond Park is also close by
- Transport: The closest stations are Isleworth (0.9 miles) & Syon Lane (0.8 miles)
- Size: 148 sq m / 1,595 sq. ft (151 sq. m / 1634 sq ft including eaves and balcony)
- Chain: The property is being sold chain-free

BRICKWORKS

Approximate Floor Area:
151.8 sq m / 1634 sq ft (Including Restricted Height Area & Eaves)



Church Street Isleworth