
Belgrade Road, N16
Guide price £1,250,000

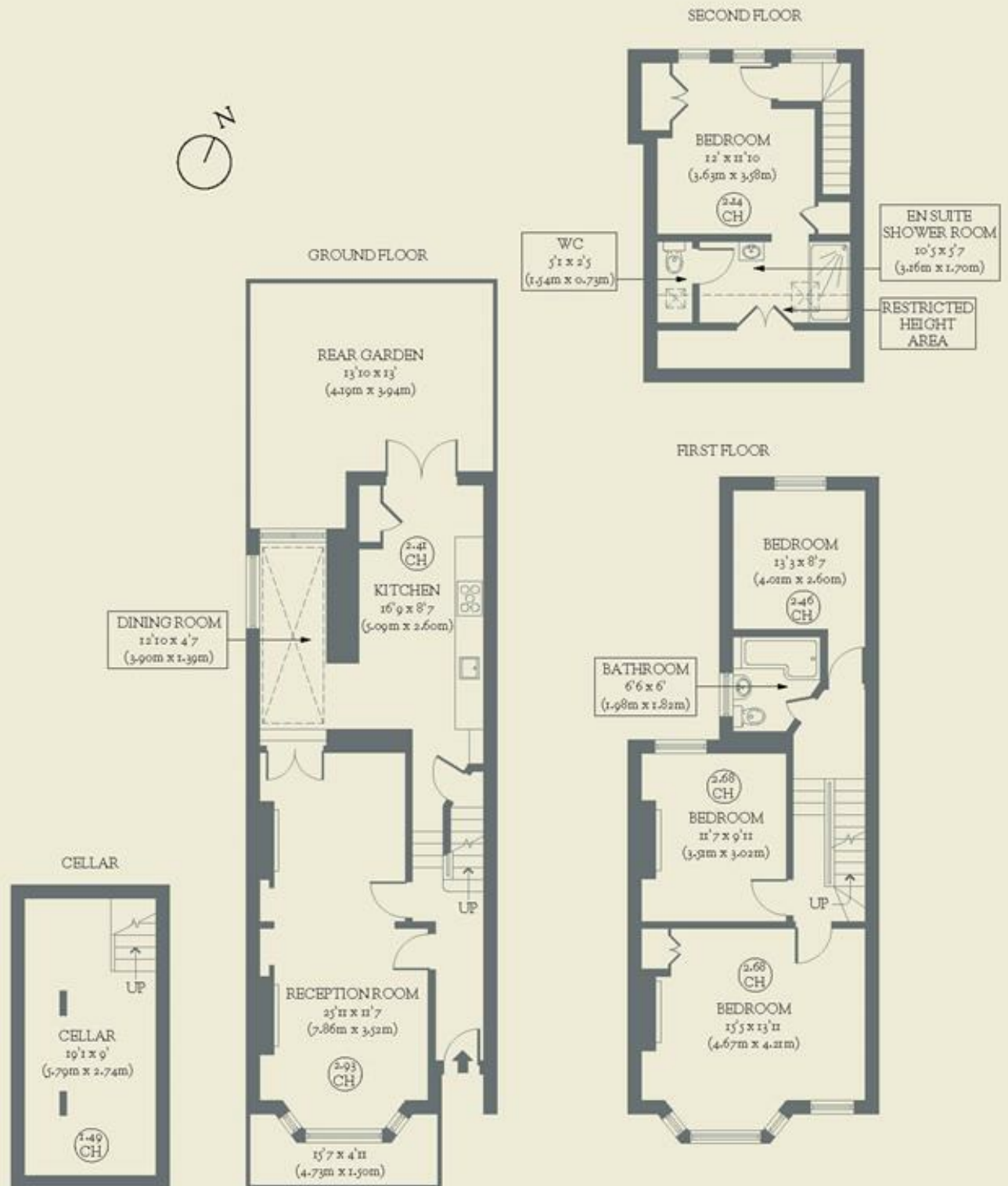


Packed with colour and thoughtful design, this creative four-bedroom terrace in Stoke Newington mixes old and new with confidence and style.

- Type: Victorian terraced house
- Beds: Four bedrooms
- Baths: Two (including an ensuite shower room)
- Living: Double living room & open-plan, eat-in kitchen
- Garden: Compact & low-maintenance with raised beds, mature hydrangea & climbers
- Love: Boutique hotel-style loft conversion
- Parks: Butterfield Green is at the end of the street, plus Clissold Park, Abney Park & Newington Green are all nearby
- Transport: Dalston Kingsland (0.5 miles), Dalston Junction (0.6 miles), Rectory Road (0.7 miles)
- Size: 150.49 sq m / 1,620 sq ft (including areas of restricted height)
- Chain: Owners need to find & are actively looking

BRICKWORKS

150.49 sq m / 1620 sq ft (Including Restricted Height Area)
 144.31 sq m / 1553 sq ft (Excluding Restricted Height Area)



Belgrade Road
 Stoke Newington