
Wilberforce Road, N4
Guide price £625,000



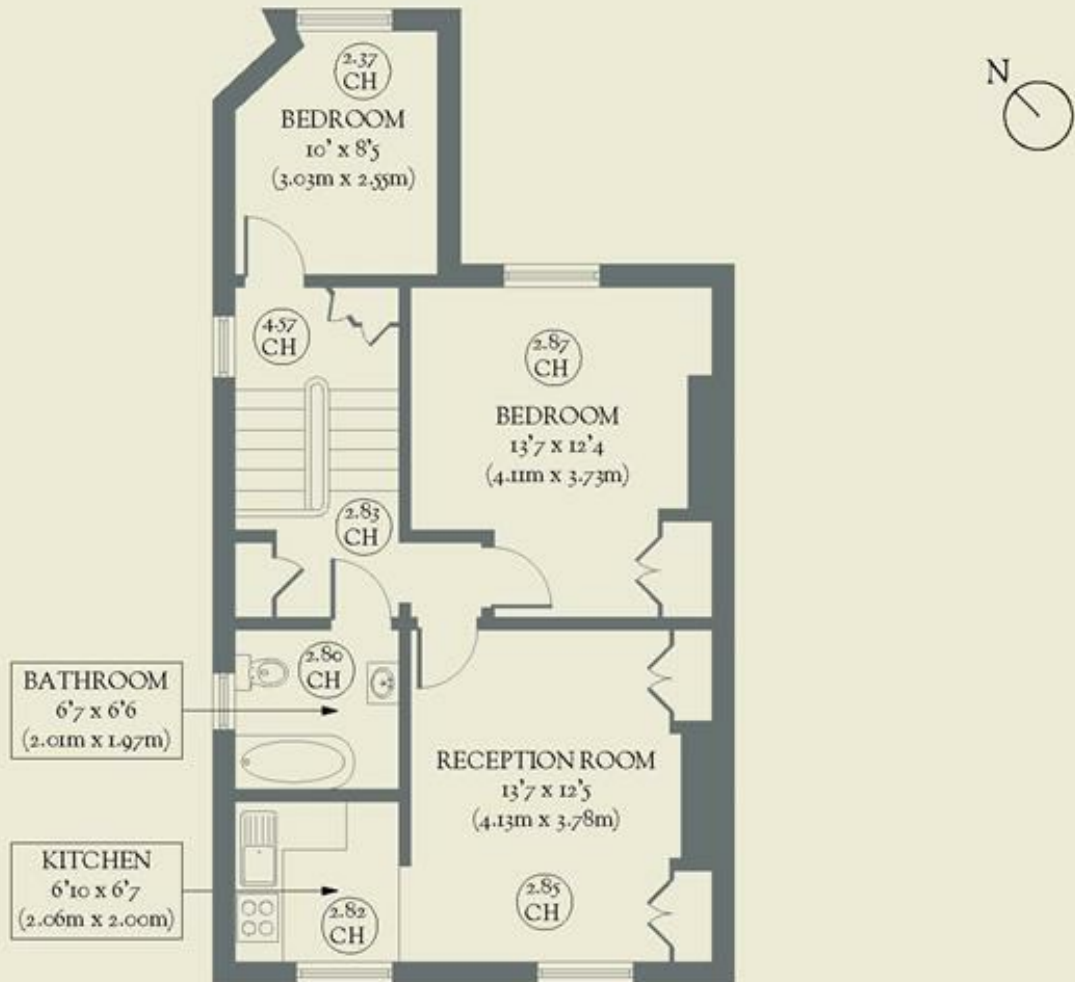
There's a whole heap of character crammed into this two-bedroom Victorian that sits within a coveted corner of Finsbury Park

- Type: Split-level flat in a Victorian conversion
- Beds: Two bedrooms
- Baths: One bathroom
- Living: Open-plan kitchen & living space
- Tenure: Leasehold (112 years remain on the lease)
- Love: The stained glass window in the hallway is a joy
- Parks: The flat sits between Finsbury Park & Clissold Park
- Transport: Finsbury Park (0.3 miles)
- Size: 60.90 sq m / 656 sq ft
- Chain: Owners need to find & are actively looking

BRICKWORKS

Approximate Floor Area:
60.90 sq m / 656 sq ft

SECOND FLOOR



FIRST FLOOR



Wilberforce Road
Finsbury Park