

---

## Stroud Green Road, N4

Guide price £525,000

---



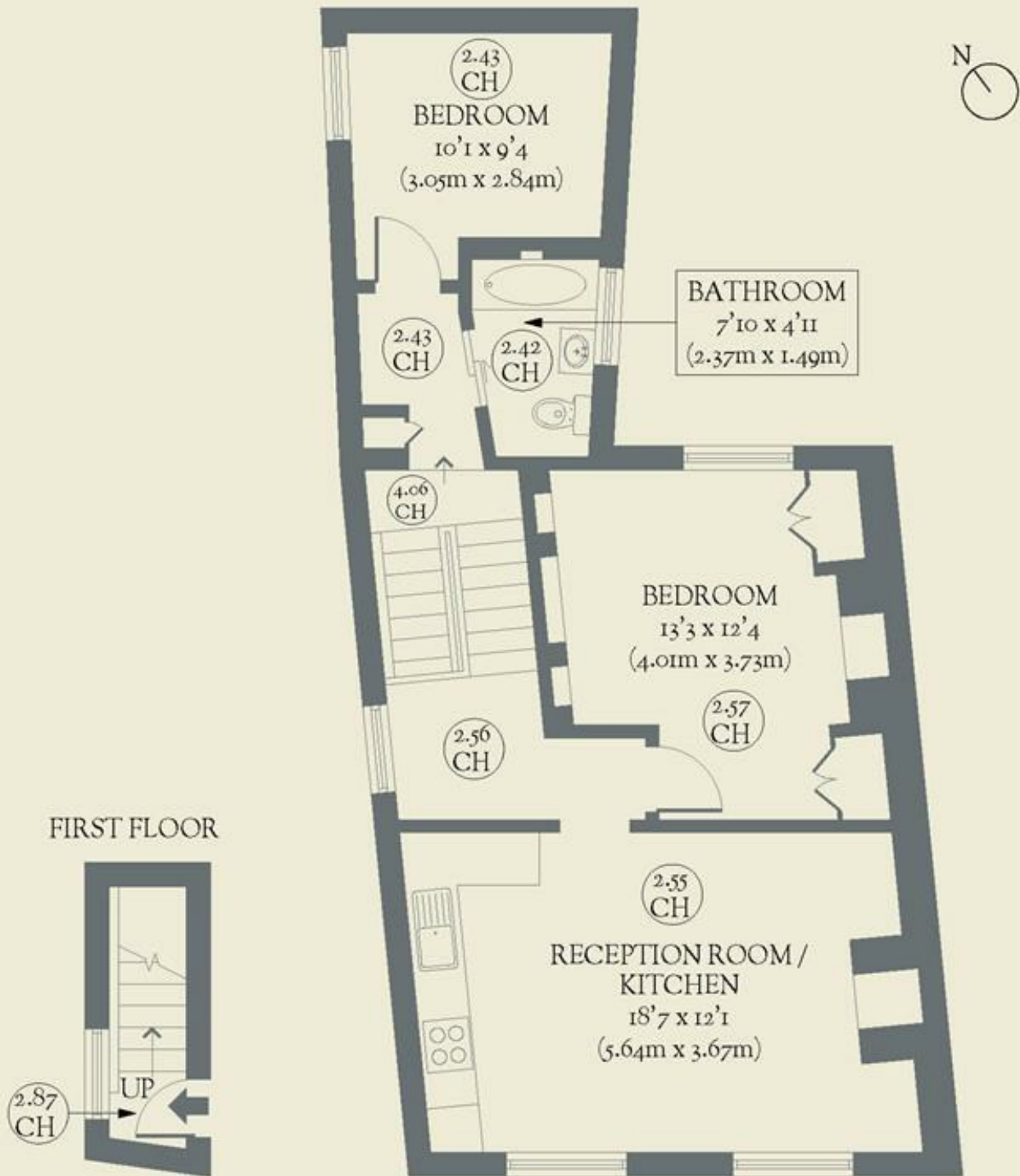
**Overlooking the vibrant activity of Finsbury Park, this two-bedroom apartment pairs elegant interiors with bespoke functionality for an effortlessly relaxing space.**

- Type: Split-level flat (top floor)
- Beds: Two bedrooms
- Baths: One bathroom
- Living: Open-plan kitchen & living space
- Tenure: Leasehold (102 years remaining)
- Love: The pretty in pink bedroom
- Parks: Finsbury Park & Parkland Walk are within easy reach
- Transport: Finsbury Park Underground (0.2 miles)
- Size: 64.90 sq m / 690 sq ft
- Chain: The owners are actively looking for their next project

# BRICKWORKS

Approximate Floor Area:  
64.10 sq m / 690 sq ft

## SECOND FLOOR



Stroud Green Road  
*Stroud Green*