

---

**Akerman Road, SW9**  
Guide price £550,000

---

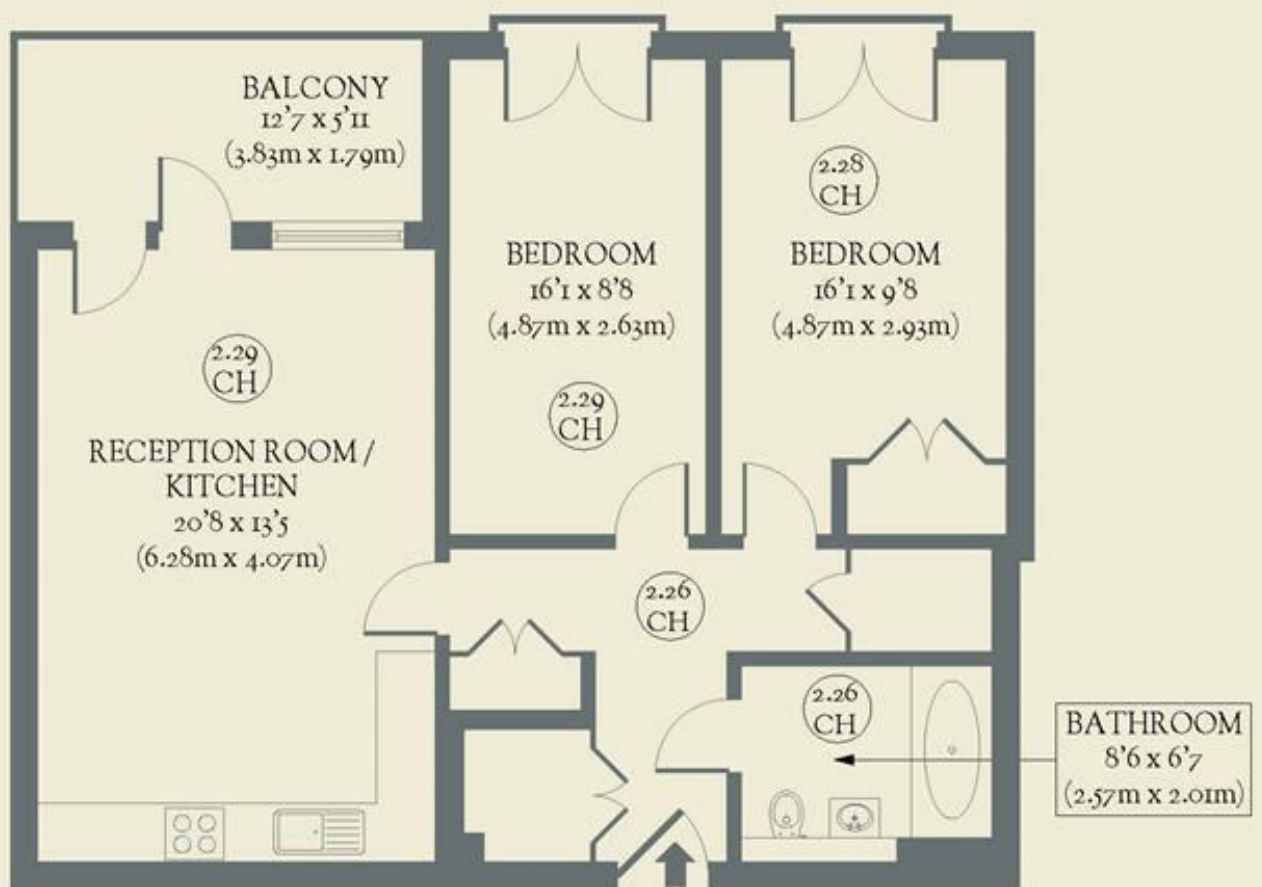


**Beautifully modern, this two-bedroom second-floor flat sits happily between Brixton and Camberwell and fuses seamless function with visual appeal.**

- Type: Second-floor apartment in a modern development
- Beds: Two bedrooms (both doubles)
- Baths: One bathroom
- Living: Open-plan living space & kitchen
- Tenure: Leasehold with 90 years remaining
- Love: The bike storage onsite is super handy
- Parks: Myatts Fields, Ruskin Park, Burgess Park & Kennington Park are all nearby
- Transport: Oval (0.8 miles), Loughborough Junction (0.7 miles), Stockwell (0.9 miles) & Brixton (1 mile)
- Size: 73.08 sq m / 787 sq ft
- Chain: The owner is selling chain-free

# BRICKWORKS

Approximate Floor Area:  
73.08 sq m / 787 sq ft



Akerman Road  
*Brixton*