
Wandsworth Road, SW8
Guide price £750,000

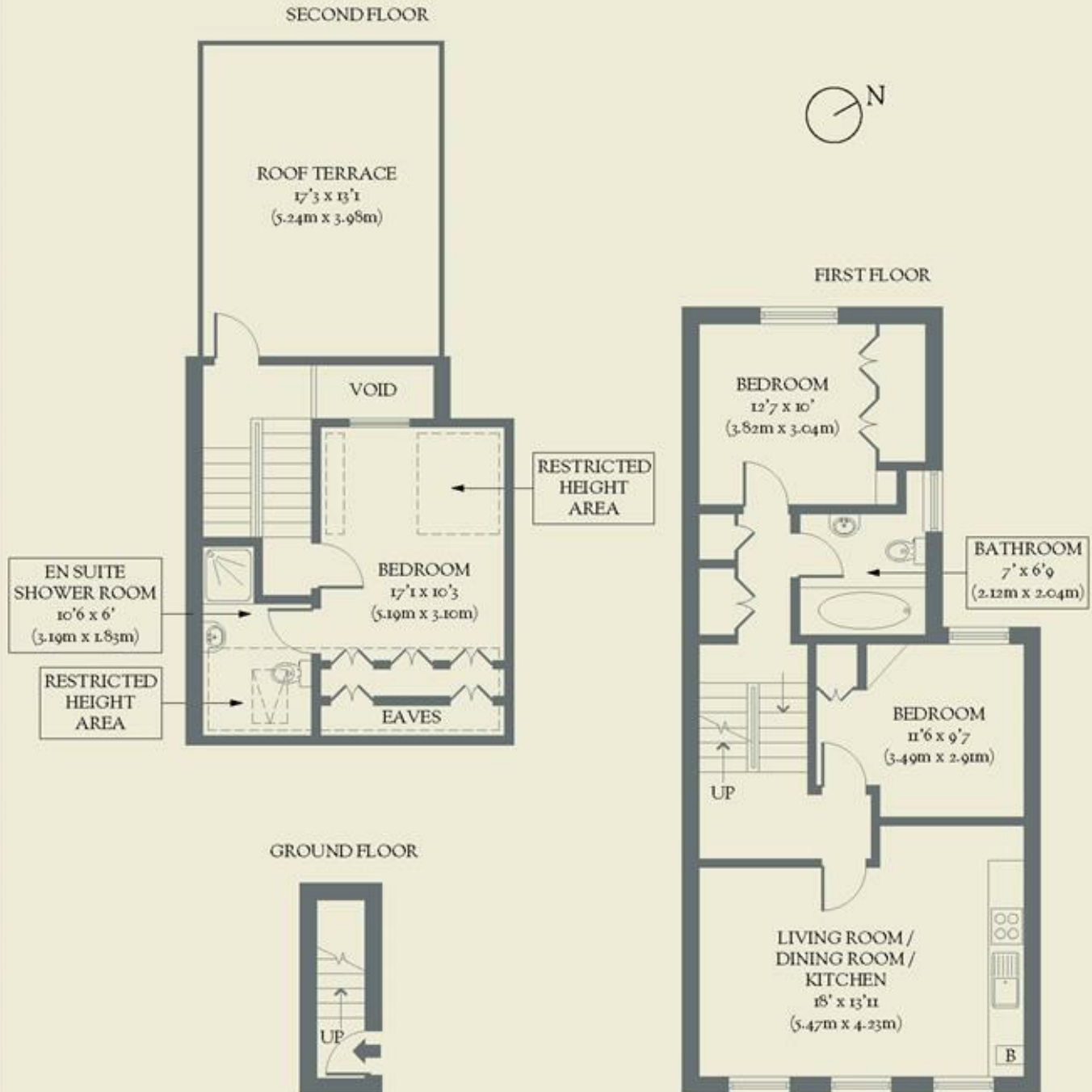


Within sight of Battersea Power Station, this elegant three-bedroom apartment is brimming with charm and comes with a swoon-worthy roof terrace.

- Type: Split-level apartment with roof terrace
- Beds: Three bedrooms
- Baths: Two bathrooms (including an ensuite)
- Living: Open-plan kitchen & living space
- Tenure: Leasehold with 116 years remaining
- Love: The roof terrace is huge & has fantastic views of the city skyline
- Parks: Larkhall Park & Battersea Park are both within easy reach
- Transport: Nine Elms (0.2 miles), Wandsworth Road (0.6 miles), Stockwell (0.6 miles) & Vauxhall (0.8 miles)
- Size: 80.40 sq m / 863 sq ft (93.37 sq m/1,005 sq ft including areas of restricted height, eaves & void)
- Chain: The owners are selling chain-free

BRICKWORKS

Approximate Floor Area:
93.37 sq m / 1005 sq ft (Including Restricted Height Area, Eaves & Void)
80.14 sq m / 863 sq ft (Excluding Restricted Height Area, Eaves & Void)



Wandsworth Road
London