
Cecilia Road, E8
Guide price £750,000

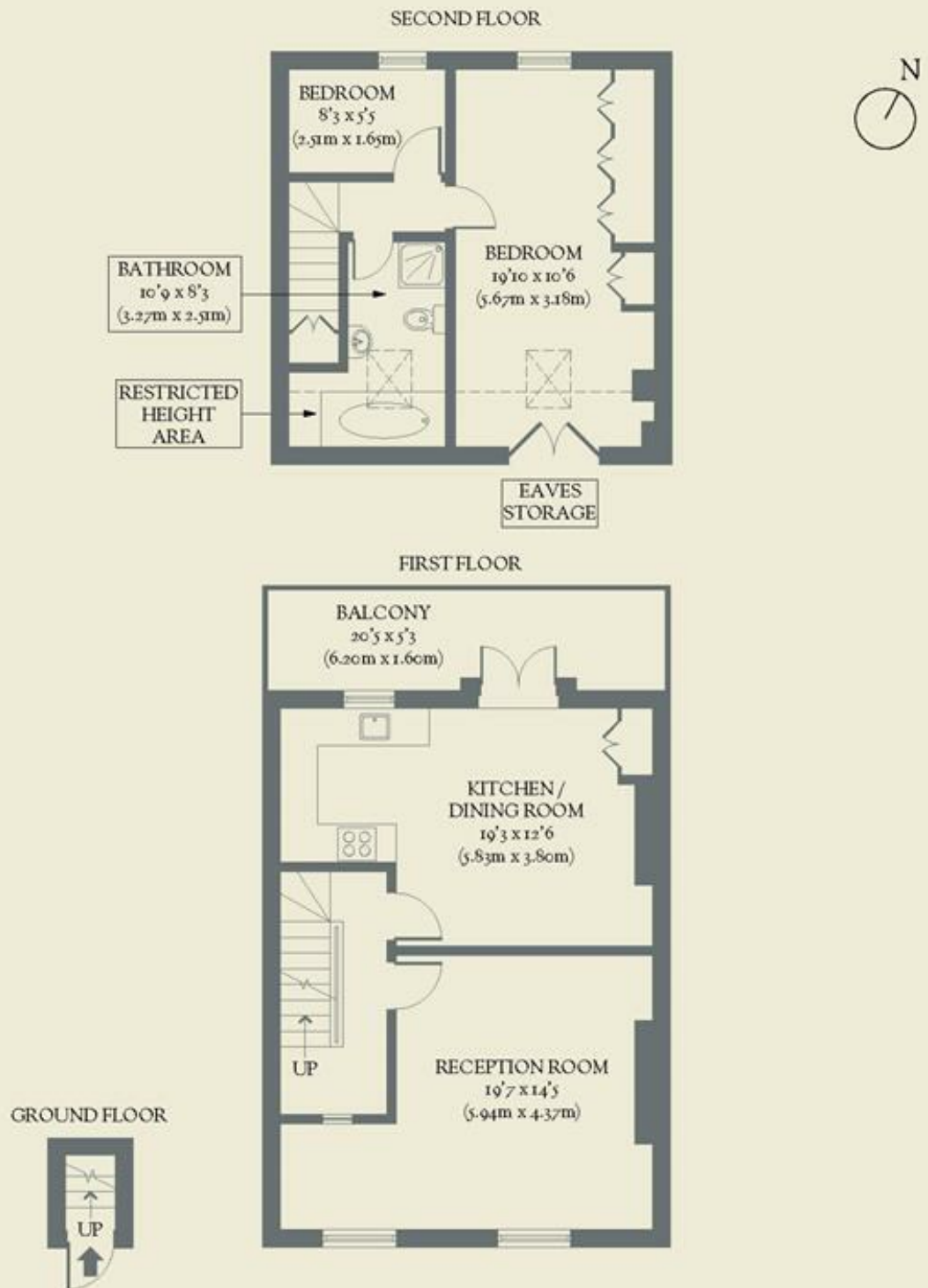


On the doorstep of Dalston, this expansive, two-bedroom apartment is a lesson in pared-back design. It is a truly outstanding home.

- Type: A split-level flat in a Victorian terrace
- Beds: Two bedrooms (one double, one single)
- Baths: One bathroom (with Vola fittings)
- Living: Separate living space & eat-in kitchen
- Tenure: Share of freehold
- Love: The terrace off the kitchen which delivers a spot for food & wine with views out over verdant gardens
- Parks: Hackney Downs, London Fields & Hackney Marshes are all nearby
- Transport: Dalston Kingsland (0.5 miles), Rectory Road (0.5 miles), Hackney Downs (0.5 miles), Dalston Junction (0.7 miles) & Hackney Central (0.9 miles)
- Size: 80.69 sq m / 869 sq ft (85.80 sq m / 924 sq ft including restricted height area)
- Chain: The owner needs to find & is actively looking

BRICKWORKS

Approximate Floor Area:
85.80 sq m / 924 sq ft (Including Restricted Height Area)
80.69 sq m / 869 sq ft (Excluding Restricted Height Area)



Cecilia Road
Hackney