

---

**Forrester Way, E15**  
By auction £725,000

---



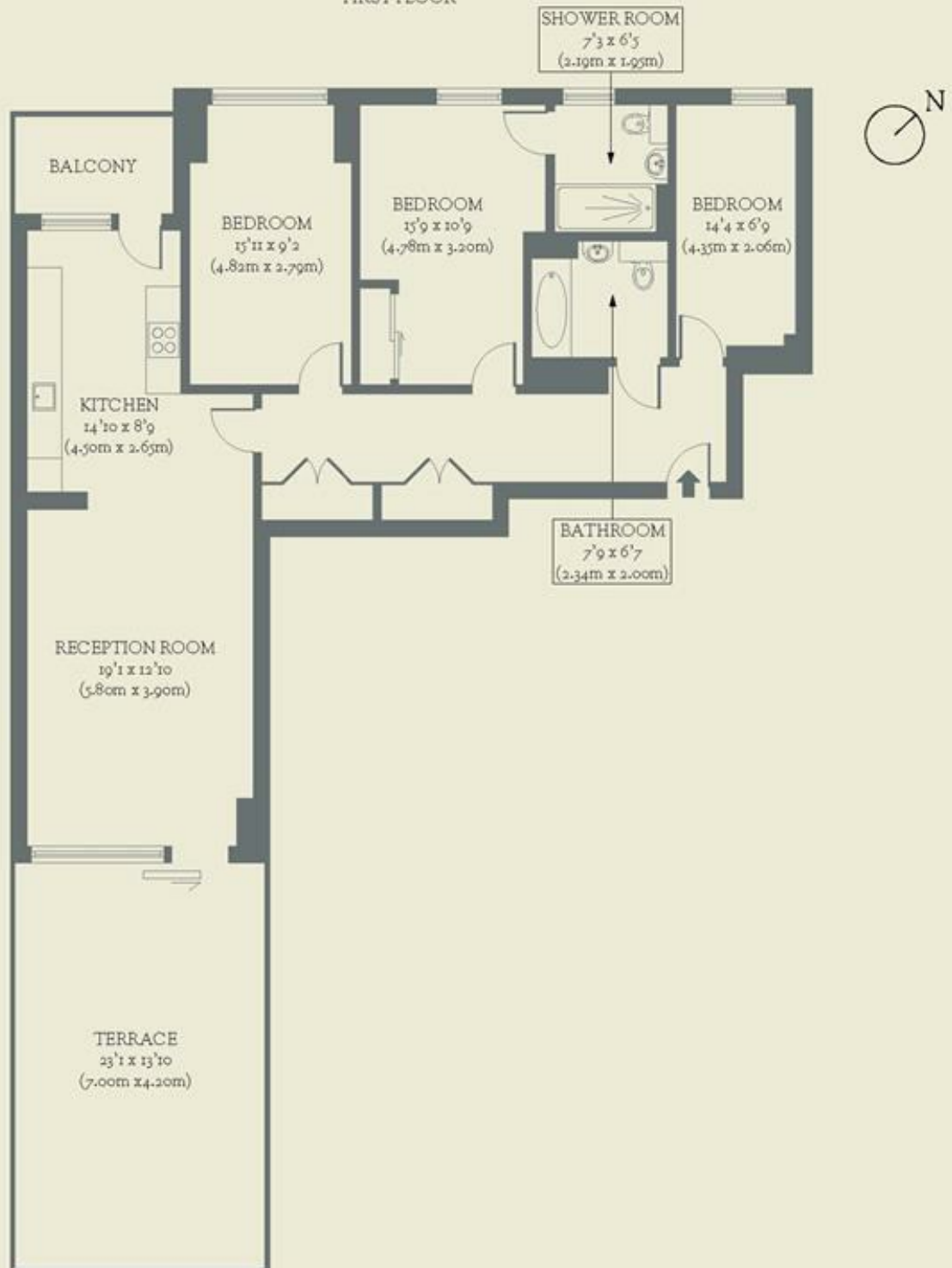
**Perched on the first floor of a modern apartment block in the heart of Stratford, this twenty-first-century home has three bedrooms, top-notch facilities and a vast, sun-trap terrace.**

- Type: A first-floor flat in a modern apartment block
- Beds: Three bedrooms
- Baths: Two (including one ensuite)
- Living: Open plan kitchen & living space
- Tenure: Leasehold (approx 994 years left on the lease)
- Love: The private terrace is huge, private and faces southeast, so you get sun almost all-day
- Parks: Queen Elizabeth Olympic Park & Hackney Marshes are both nearby
- Transport: Stratford Underground, Overground, DLR (0.3 miles) & Stratford International (0.3 miles)
- Size: 104.2 sq m / 1121 sq ft
- Chain: The owners are selling chain-free

# BRICKWORKS

Approximate Floor Area:  
104.31 sq m / 1123 sq ft

FIRST FLOOR



Forrester Way  
Stratford