
Rosebery Avenue, N17
Guide price £550,000

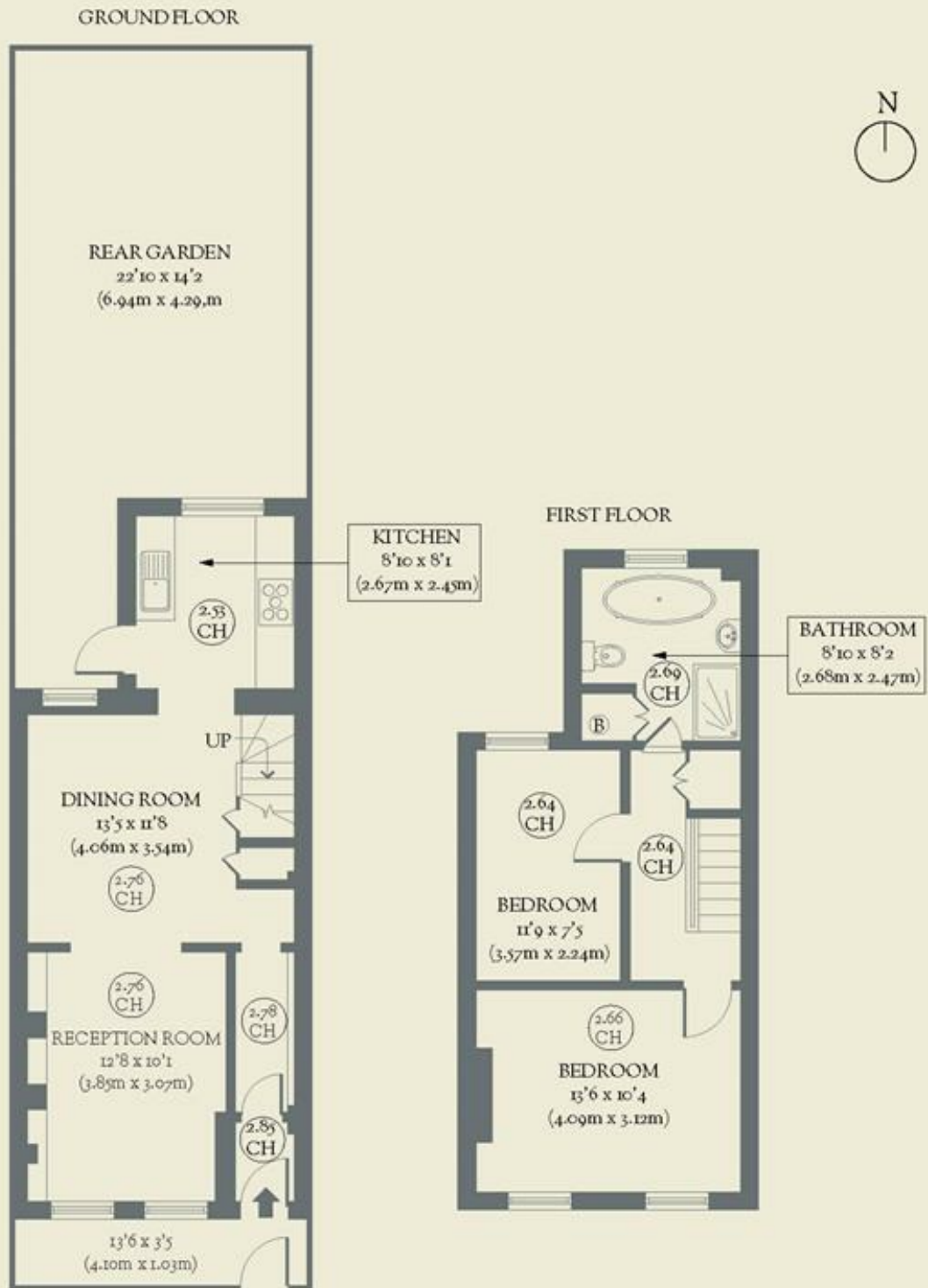


Time and TLC have gone into creating this stylish two-bedroom house in Tottenham, where colour and space have been used with ever-so-pleasing results.

- Type: Victorian terraced house
- Beds: Two bedrooms
- Bath: One bathroom
- Living: Reception, dining & kitchen
- Garden: A blank canvas & backing onto Hartington Park
- Love: The bold & beautiful use of colour
- Parks: Hartington Park, Bruce Castle Park, Tottenham Marshes & Walthamstow Wetlands are all nearby
- Transport: Bruce Grove (0.5 miles), Northumberland Park (0.7 miles) & Tottenham Hale (0.8 miles)
- Size: 74 sq m / 796 sq ft
- Chain: The owners are selling chain-free

BRICKWORKS

Approximate Floor Area:
73.94 sq m / 796 sq ft



Rosebery Avenue
Tottenham