
Thomas More House, EC2Y

Guide price £725,000



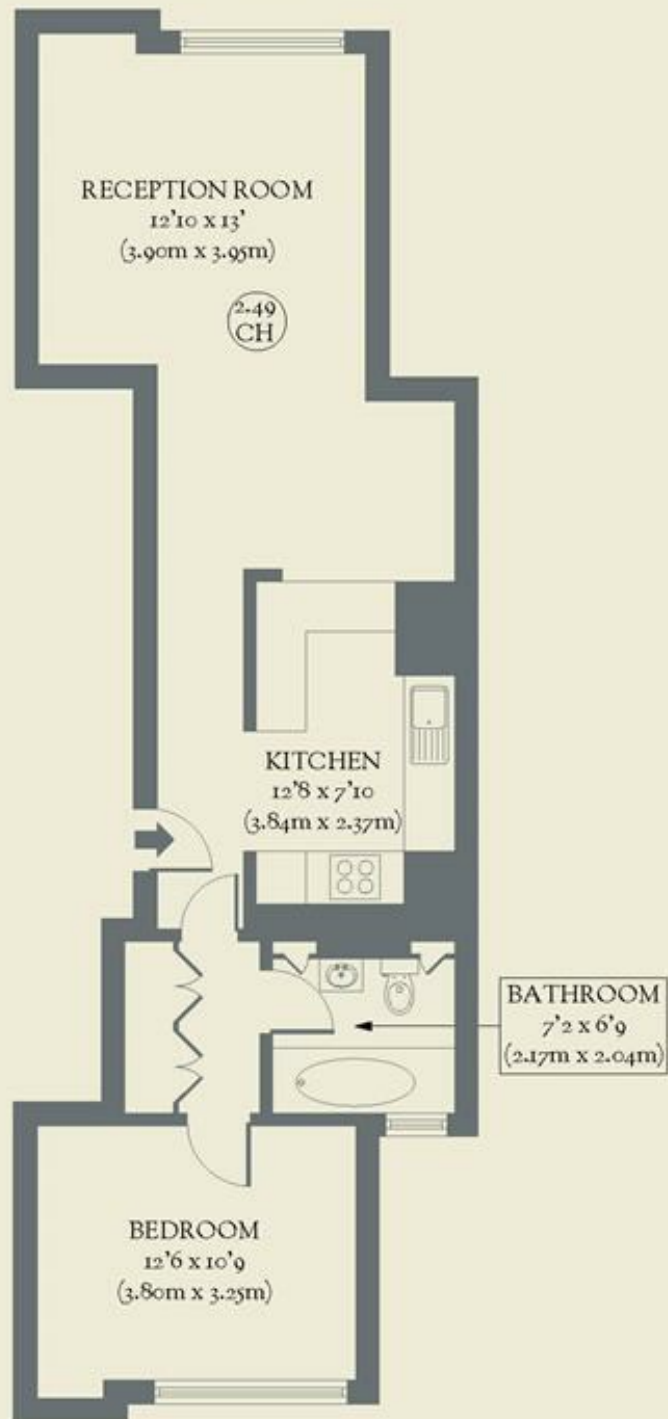
Set in the Barbican Estate, overlooking Thomas More Garden, this superb one-bedroom flat is a modernist's dream and feels a million miles away from the city.

- Type: Type 16 Flat in Thomas More House, part of the Barbican Estate
- Beds: One bedroom
- Baths: One bathroom
- Living: Open-plan living room plus kitchen
- Tenure: Leasehold (172 years remaining)
- Love: The bold architectural landscape and the prime, central location make this 'city within a city' one of London's most revered addresses
- Parks: Thomas More Garden, Speed Garden, Barbican Wildlife Garden (all private residents' gardens in the Barbican Estate), plus Fortune Street Park and Charterhouse Square just outside the Estate
- Transport: Underground stations Barbican (0.1 miles), Moorgate (0.3 miles), St. Paul's (0.4 miles), plus connections to the newly opened Elizabeth line
- Size: 59 sq m / 633 sq ft
- Chain: The owners are actively looking

BRICKWORKS

Approximate Floor Area:
58.80 sq m / 633 sq ft

FIRST FLOOR



Thomas More House *Barbican*