
Abbotsford Avenue, N15

Guide price £500,000

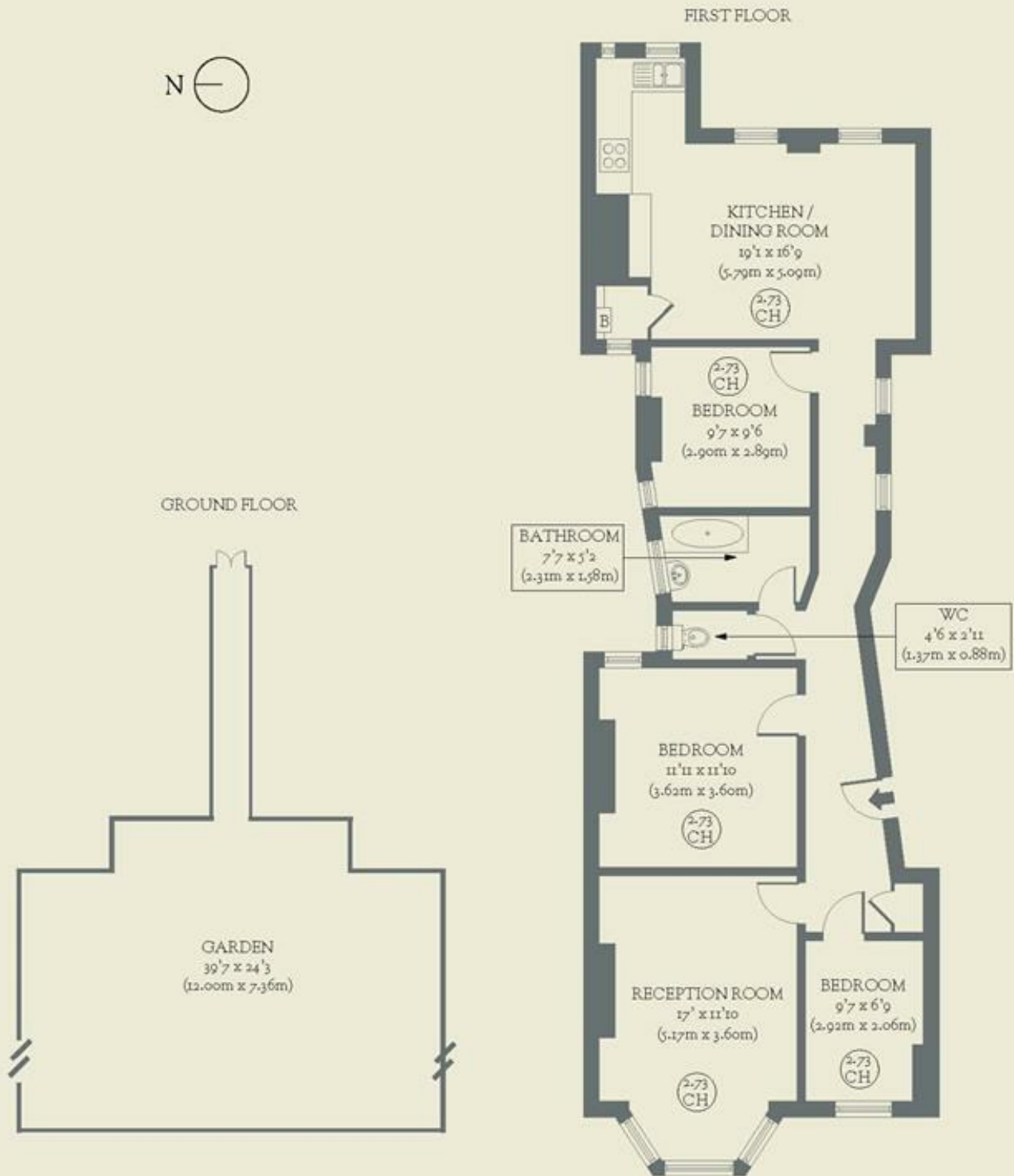


Within a handsome Victorian mansion block, this light-filled three-bedroom flat in Tottenham sits on a quiet one-way street, moments from two local parks.

- Type: Flat in a Victorian mansion block (1st floor) with communal garden
- Beds: Three bedrooms
- Baths: One bathroom plus WC
- Living: Kitchen-diner & separate living room
- Tenure: Share of Freehold
- Love: We adore the cork floor in the eat-in kitchen
- Parks: Set between Chestnuts Park & Downhills, moments from both
- Transport: Turnpike Lane (0.7 miles) & Seven Sisters (0.9 miles)
- Size: 91 sq m / 980 sq ft
- Chain: The owners are selling chain-free

BRICKWORKS

Approximate Floor Area:
91.02 sq m / 980 sq ft



Abbotsford Avenue
Tottenham