

---

**Nisbet House, E9**  
Guide price £395,000

---



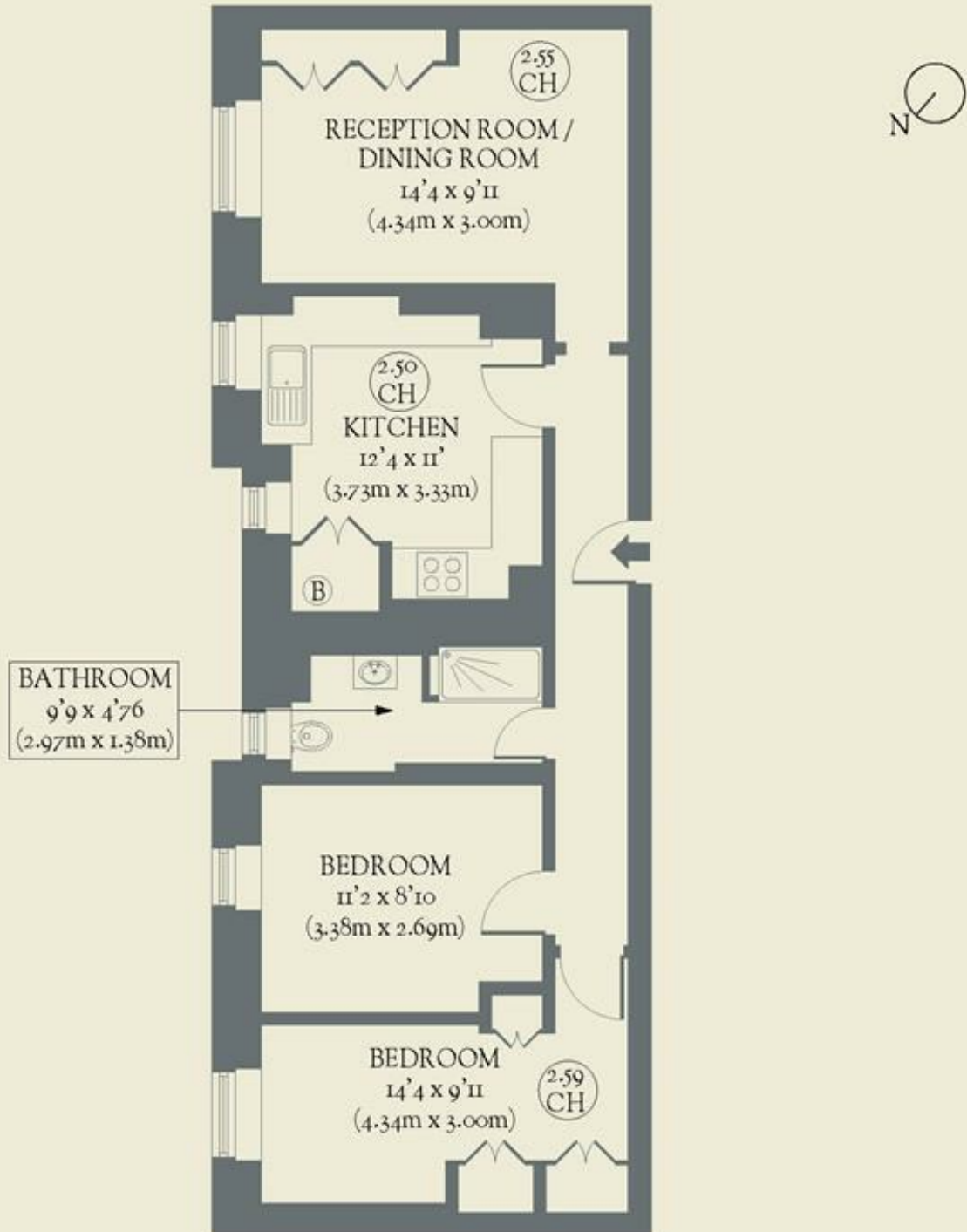
**A stone's throw from the buzz of Homerton, this stylish two-bedroom flat utilises every inch of space and has visual and neighbourhood appeal.**

- Type: A ground-floor flat in a 1930s block
- Beds: Two bedrooms
- Baths: One bathroom
- Living: Separate kitchen & living space
- Tenure: Leasehold (91 years remaining)
- Love: We adore the bathroom's wooden washstand
- Parks: Victoria Park, Millfields Park & Hackney Marshes are all nearby
- Transport: Homerton Overground (0.2 miles) & Stratford International (1.7 miles)
- Size: 63.37 sq m / 682 sq ft
- Chain: The owners are selling chain-free

# BRICKWORKS

Approximate Floor Area:  
63.37 sq m / 682 sq ft

GROUND FLOOR



Homerton High Street  
*Hackney*