

BRICKWORKS

PROPERTY BROCHURE

:

Yerbury Road
Tufnell Park, 3 Bed. House
£1,550,000

BRICKWORKS
Yerbury Road
Tufnell Park, 3 Bed. House
£1,550,000



Offering grand proportions, a gorgeous colour scheme, and top-notch location, this terraced home in Tufnell Park enchants and delights.

BRICKWORKS

Yerbury Road

Tufnell Park, 3 Bed. House

£1,550,000



- Type: Late-Victorian, mid-terraced house
- Beds: Three double bedrooms
- Baths: Two bathrooms (one en-suite) & additional downstairs cloakroom
- Living: Living room, dining room & kitchen with space for dining.
- Garden: East-facing garden with lawn, patio & mature planting
- Love: Ornate cornicing & hotel-style main bedroom suite
- Parks: Moments from Whittington Park, but also within easy reach of Waterlow Park, Parliament Hill & Hampstead Heath
- Transport: Upper Holloway (0.4 miles), Tufnell Park (0.7 miles), Holloway Road (0.9 miles) & Finsbury Park (1.2 miles)
- Size: 142.4 sq m / 1,533 sq ft
- Chain: Being sold chain-free

BRICKWORKS

Yerbury Road

Tufnell Park, 3 Bed. House

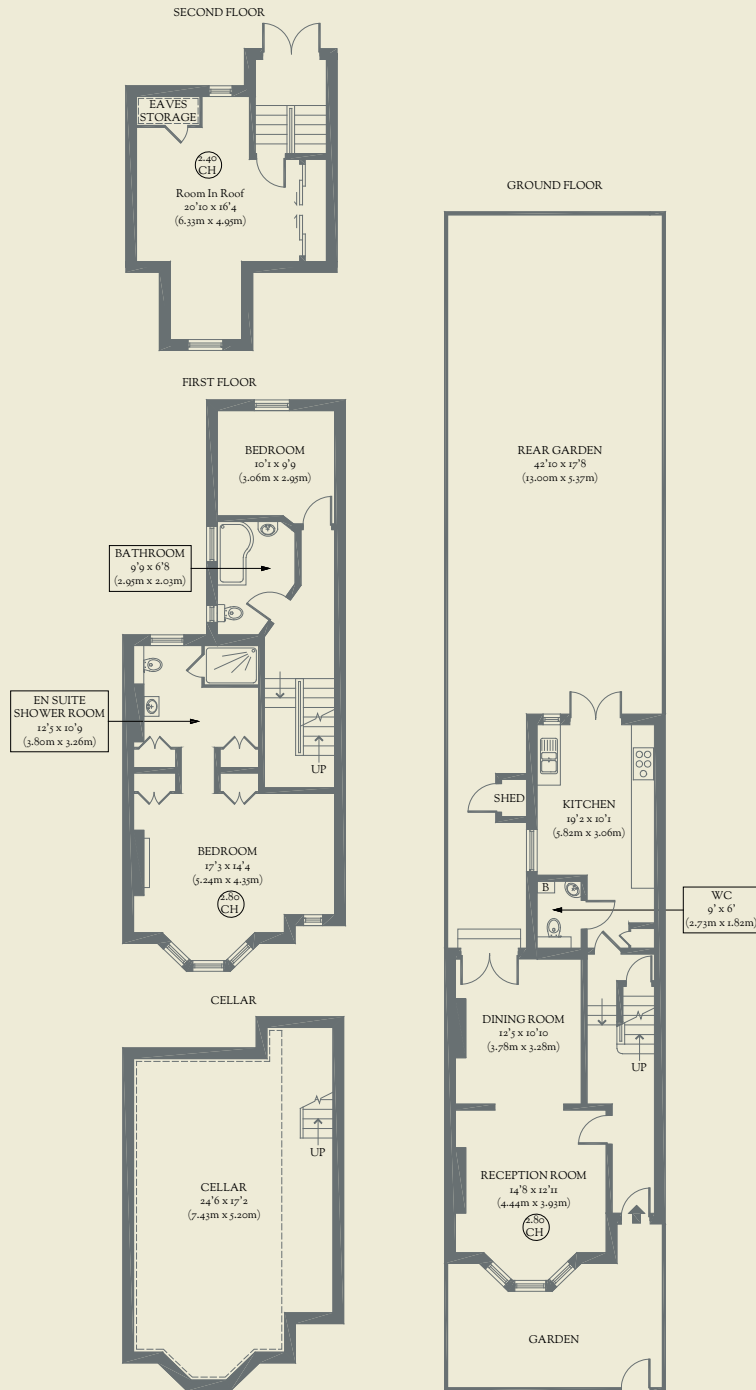
£1,550,000



BRICKWORKS

Floorplans

Approximate Floor Area:
184.61 sq m / 1987 sq ft (Including Cellar)
143.55 sq m / 1545 sq ft (Excluding Cellar)



Yerbury Road
Tufnell Park, 3 Bed. House
£1,550,000