

---

**Fordham Street, E1**  
Guide price £850,000

---

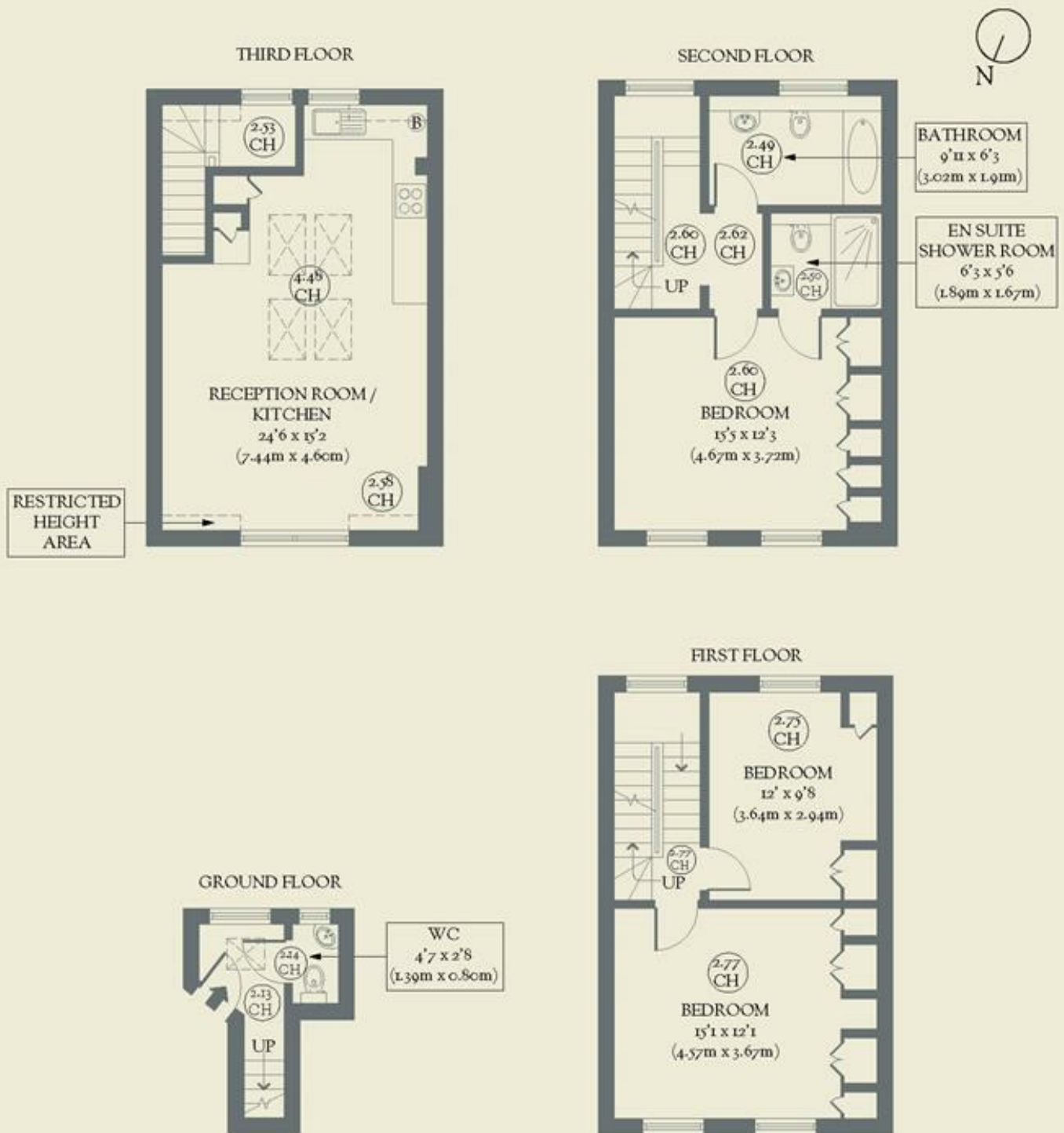


**In the heart of the East End, moments from the Whitechapel Gallery, this striking three-bedroom flat comes with the Freehold for the entire building and is brimming with character and style.**

- Type: Split-level flat in a Victorian terrace
- Beds: Three double bedrooms
- Baths: Bathroom, plus an ensuite & downstairs WC
- Living: Double-height, open-plan living space
- Tenure: The owner owns the freehold to the entire building
- Love: The top-floor living room steals the show
- Parks: Altab Ali Park, Stepney Green Park & Spitalfields City Farm are all close by
- Transport: Whitechapel Underground & Overground (0.4 miles) Aldgate East Underground (0.4 miles)
- Size: 107.48 sq m / 1,157 sq ft (excluding areas of restricted height)
- Chain: The owner is actively looking

# BRICKWORKS

Approximate Floor Area:  
108.96 sq m / 1173 sq ft (Including Restricted Height Area)  
107.48 sq m / 1157 sq ft (Excluding Restricted Height Area)



Fordham Street  
Whitechapel