

---

**Bowater Place, SE3**  
Guide price £650,000

---

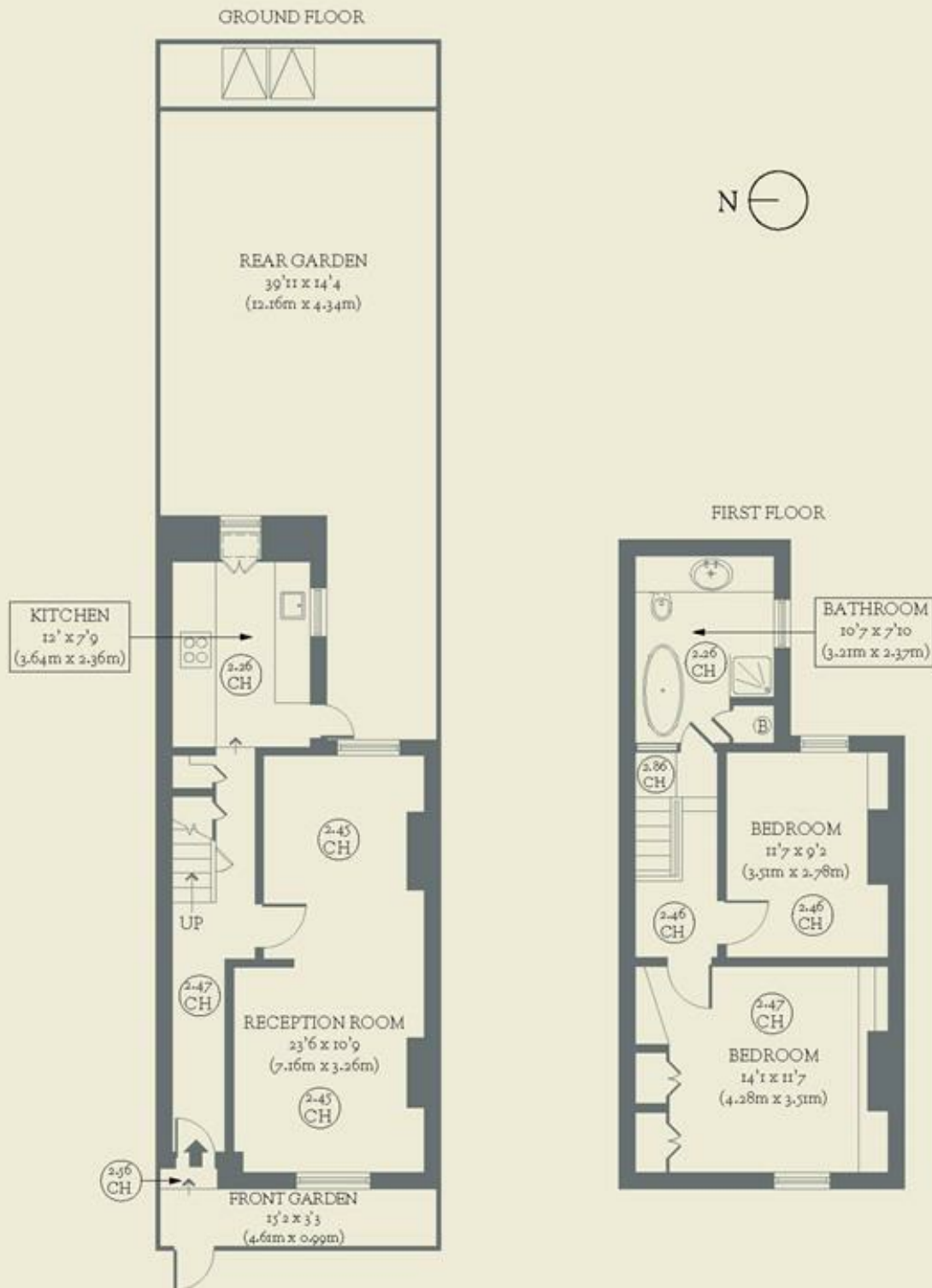


**Down a quiet street in Blackheath, the unassuming facade of a Victorian house conceals a strikingly modern interior that confounds expectations.**

- Type: Late-Victorian terraced house
- Beds: Two double bedrooms
- Baths: One bathroom
- Living: Double reception & kitchen
- Garden: Mature, landscaped and east-facing
- Love: The picture (oriel) window in the kitchen and the sightline created from the front of the house all the way through to the garden
- Parks: You are between Greenwich Park & Woolwich Common
- Transport: Westcombe Park (0.9 miles), Blackheath (1.3 miles)
- Size: 78.46 sq.m / 845 sq.ft
- Chain: The owners are actively looking outside of London

# BRICKWORKS

Approximate Floor Area:  
78.46 sq m / 845 sq ft



Bowater Place  
Blackheath