

BRICKWORKS

PROPERTY BROCHURE

⋮

Georges Road
Islington, 2 Bed. Flat
£625,000

BRICKWORKS
Georges Road
Islington, 2 Bed. Flat
£625,000



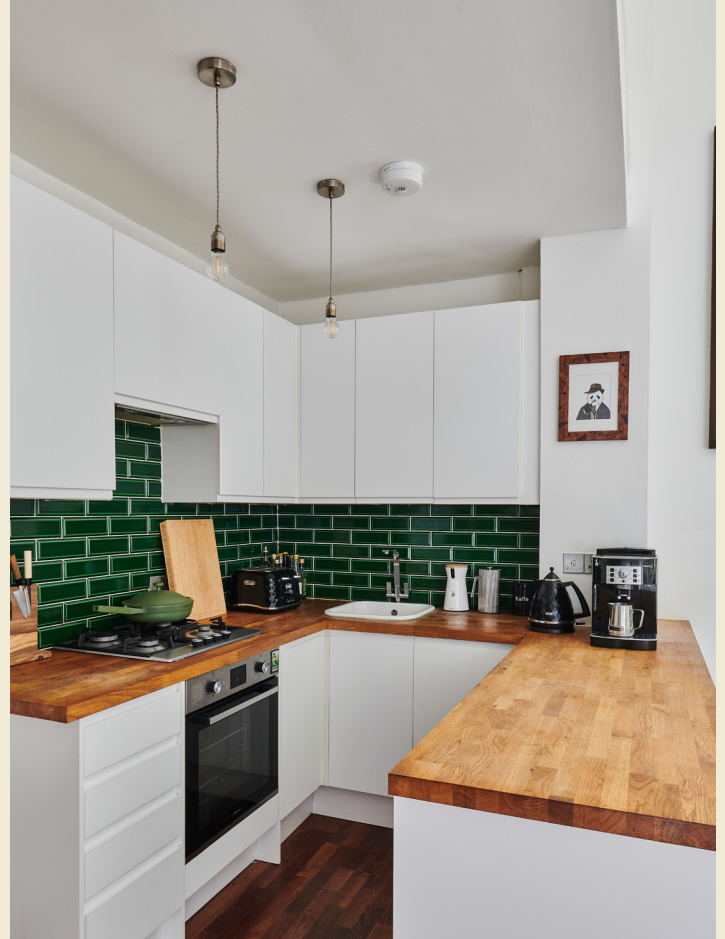
Carved out of an old Victorian school building, this two-bedroom home with double-height spaces is destined for great things.

BRICKWORKS

Georges Road

Islington, 2 Bed. Flat

£625,000



- Type: Victorian school conversion (ground floor) with off-street parking
- Beds: Two double bedrooms
- Baths: One bathroom
- Living: Open-plan living & kitchen
- Tenure: Share of freehold
- Love: The character of the building & the mezzanine in the living room
- Parks: Paradise Park & Highbury Fields are close by
- Transport: Holloway Road station (0.2 miles), Drayton Park (0.4 miles), Highbury & Islington (0.5 miles)
- Size: 59.36 sq m / 639 sq ft
- Chain: Being sold chain-free

BRICKWORKS

Georges Road

Islington, 2 Bed. Flat

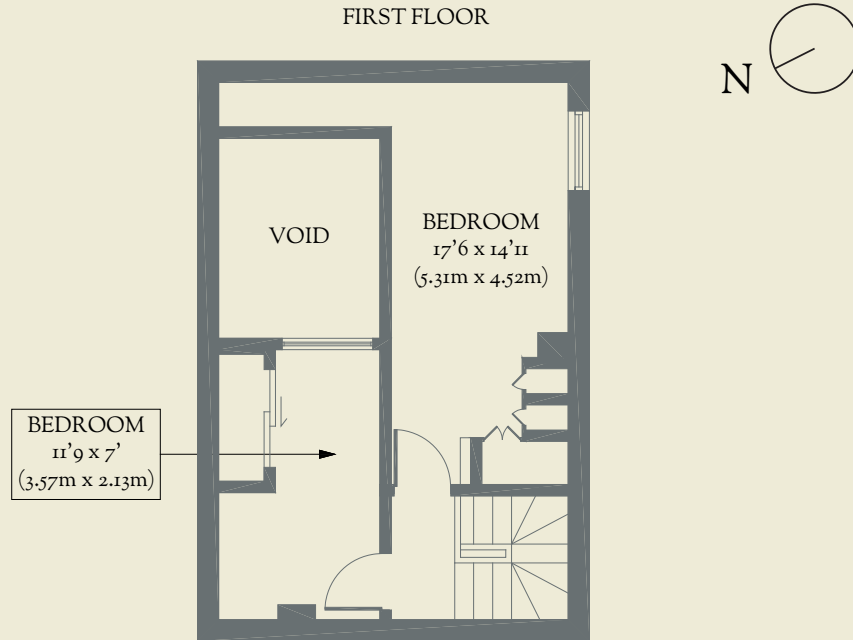
£625,000



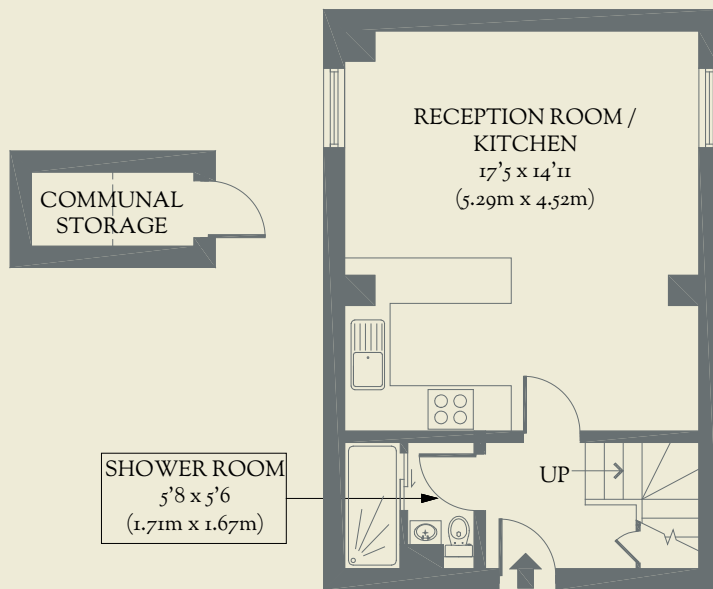
BRICKWORKS Floorplans

Approximate Floor Area:
59.36 sq m / 639 sq ft

FIRST FLOOR



GROUND FLOOR



Georges Road
Islington, 2 Bed. Flat
£625,000