

BRICKWORKS

PROPERTY BROCHURE

⋮

Wilberforce Road
Finsbury Park, 2 Bed. Flat
£685,000

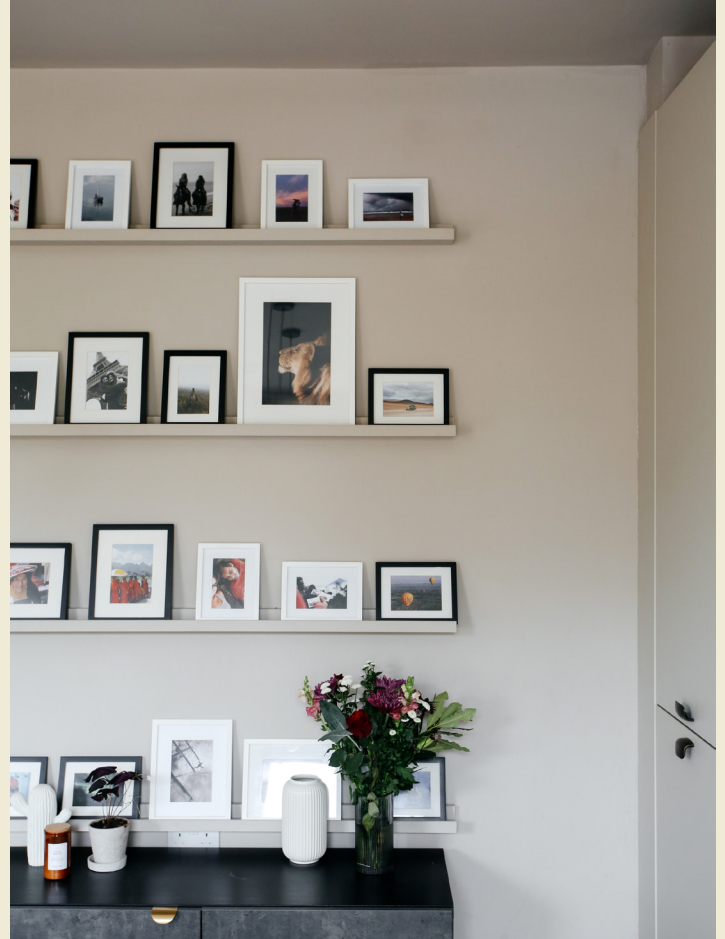
BRICKWORKS
Wilberforce Road
Finsbury Park, 2 Bed. Flat
£685,000



Away from the hubbub below, this two-bedroom flat on the first floor of a handsome Victorian townhouse in Finsbury Park exemplifies tasteful and soothing spaces.

BRICKWORKS

Wilberforce Road
Finsbury Park, 2 Bed. Flat
£685,000



- Type: Victorian conversion (1st floor)
- Beds: Two double bedrooms
- Baths: One bathroom
- Living: Open-plan living & kitchen
- Tenure: Share of freehold
- Love: With no through traffic, the street is pin-drop quiet
- Parks: Finsbury Park is at the end of the road; Clissold Park is at the other
- Transport: Finsbury Park Tube & National Rail (0.3 miles)
- Size: 61.67 sq m / 664 sq ft
- Chain: The owner is actively looking

BRICKWORKS

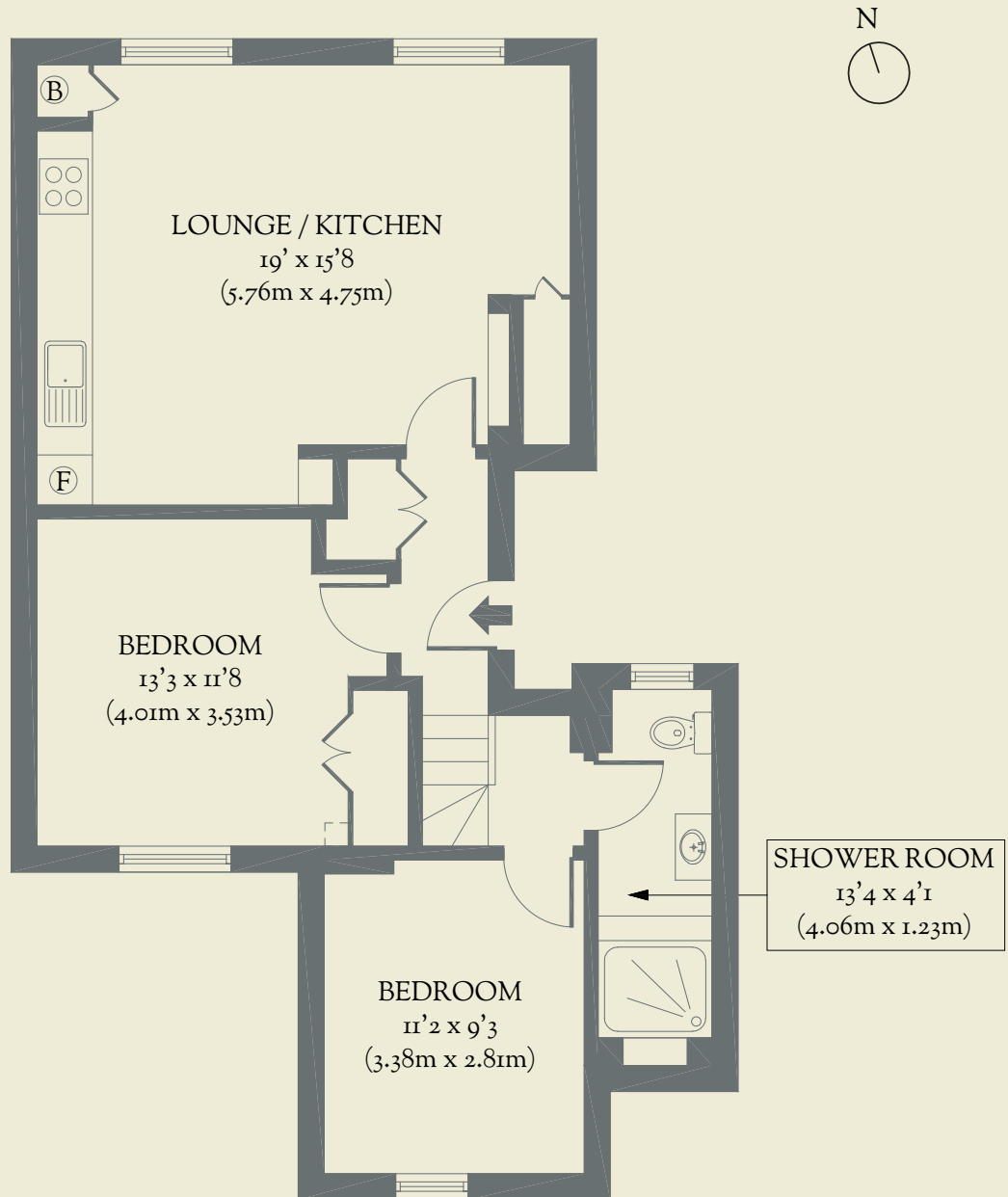
Wilberforce Road
Finsbury Park, 2 Bed. Flat
£685,000



BRICKWORKS Floorplans

Approximate Floor Area:
61.67 sq m / 664 sq ft

FIRST FLOOR



Wilberforce Road
Finsbury Park, 2 Bed. Flat
£685,000