

BRICKWORKS

PROPERTY BROCHURE

⋮

Dover Road  
*Aldersbrook*, 3 Bed. House  
£1,050,000

BRICKWORKS  
Dover Road  
*Aldersbrook, 3 Bed. House*  
£1,050,000



Completely surrounded by green space, this picture-perfect three-bedroom terrace in Aldersbrook has been lovingly reimagined for modern family life.

# BRICKWORKS

## Dover Road

### Aldersbrook, 3 Bed. House

£1,050,000



- Type: Edwardian, terraced house, built in 1909
- Beds: Three bedrooms (two doubles & one single)
- Baths: One bathroom plus downstairs WC
- Living: Living room plus open-plan kitchen, dining & sitting space
- Garden: 89ft, north-west facing
- Love: Brave & beautiful use of colour, plus who doesn't love an outdoor kitchen?
- Parks: Moments from Wanstead Park & Wanstead Flats
- Transport: Manor Park (1.0 miles), Wanstead Park (1.0 miles), Wanstead (1.4 miles) & Leytonstone (1.5 miles)
- Size: 121.01 sq. m / 1303 sq. ft
- Chain: Owners have found a property, so the chain is in place pending an acceptable offer

# BRICKWORKS

## Dover Road

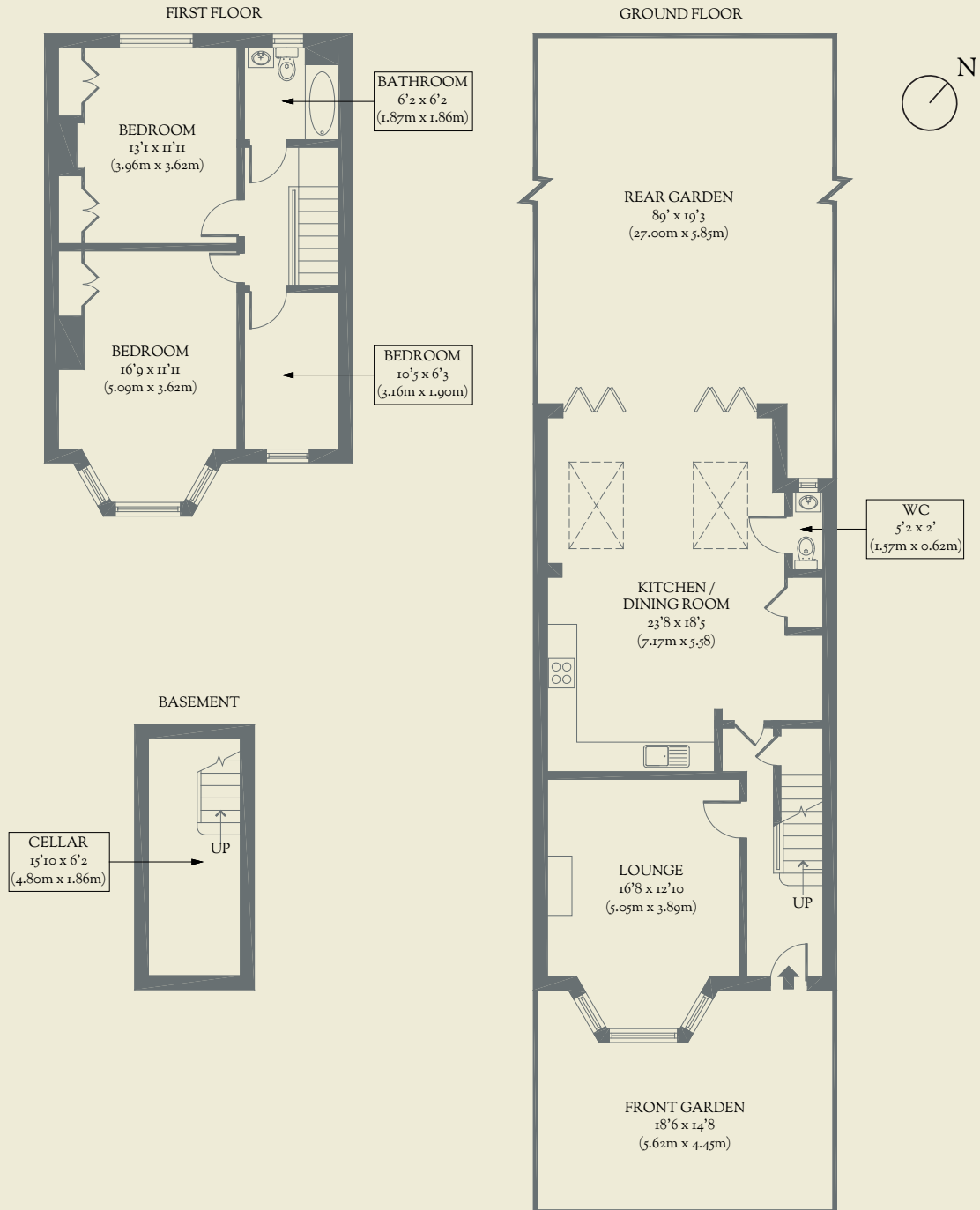
### Aldersbrook, 3 Bed. House

£1,050,000



# BRICKWORKS Floorplans

Approximate Floor Area:  
121.01 sq m / 1303 sq ft



Dover Road  
Aldersbrook, 3 Bed. House  
£1,050,000