



## Hob Hey House Hob Hey Lane, Culcheth

£1,250,000 Freehold

Executive residence nestled within an expansive and private 0.6-acre plot in the heart of Culcheth Village. Offering over 4,300 sqft and within walking distance of the village amenities.



Scan For  
More Information  
About This Property.

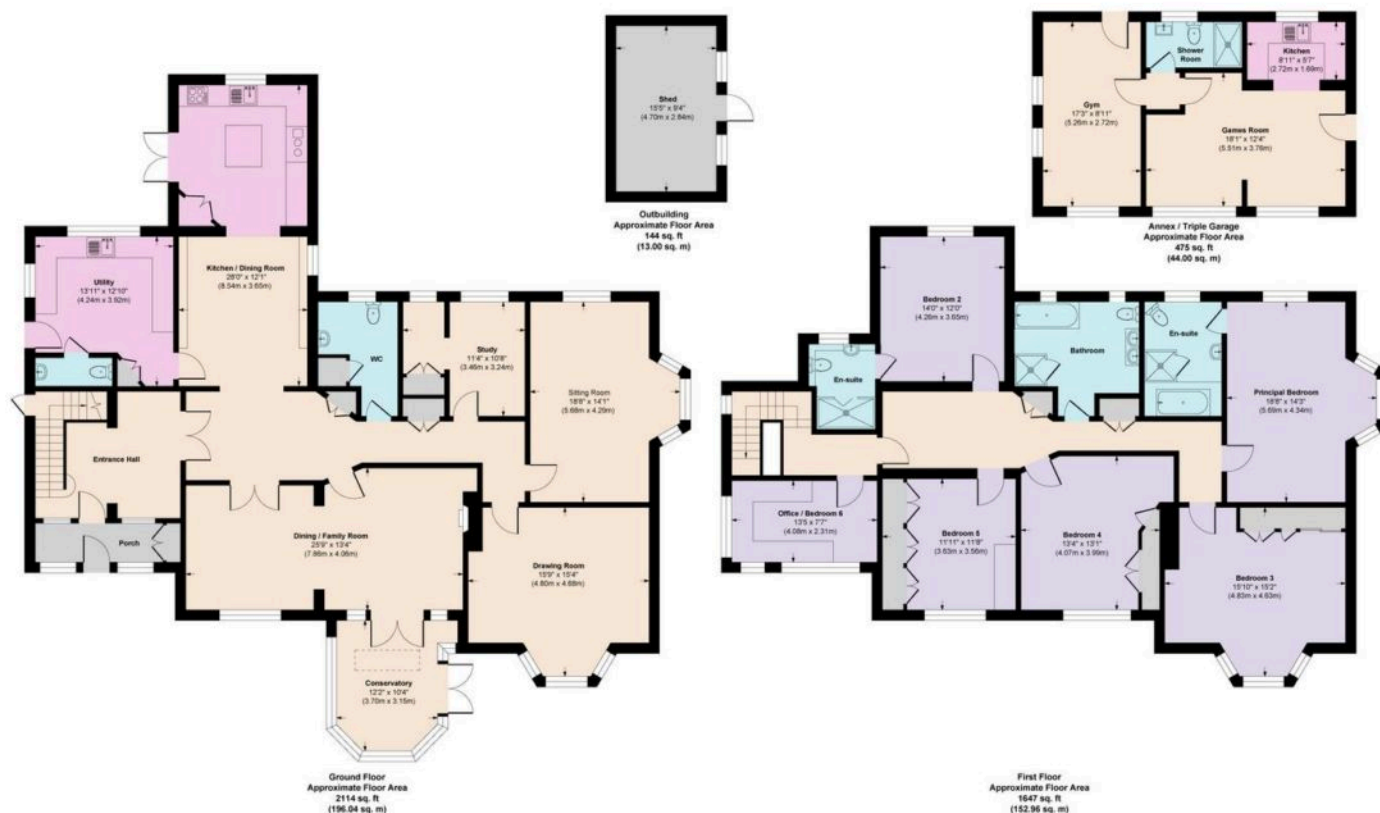
**Ashtons** 











### Approx. Gross Internal Area 4380 sq. ft / 406.00 sq. meters

Whilst every attempt has been made to ensure the accuracy of the floorplan shown, all measurements, positioning, fixtures fittings and any other data shown are an approximate interpretation for illustrative purposes only and are not to scale. No responsibility is taken for any errors, omission, miss-statement or use of data show.

[www.ashtons.net](http://www.ashtons.net)

You can include any text here. The text can be modified upon generating your brochure.



**Ashtons**

Fixtures and fittings: A list of the fitted carpets, curtains, light fittings and other items fixed to the property which are included in the sale (or may be available by separate negotiation) will be provided by the Seller's Solicitors. Important Notice: 1. Particulars: These particulars are not an offer or contract, nor part of one. You should not rely on statements by Ashtons in the particulars or by word of mouth or in writing ("information") as being factually accurate about the property, its condition or its value. Neither Ashtons nor any joint agent has any authority to make any representations about the property, and accordingly any information given is entirely without responsibility on the part of the agents, seller(s) or lessor(s). 2. Photos, Videos etc: The photographs, property videos and virtual viewings etc. show only certain parts of the property as they appeared at the time they were taken. Areas, measurements and distances given are approximate only. 3. Regulations etc: Any reference to alterations to, or use of, any part of the property does not mean that any necessary planning, building regulations or other consent has been obtained. A buyer or lessee must find out by inspection or in other ways that these matters have been properly dealt with and that all information is correct. 4. To find out how we process Personal Data, please refer to our Group Privacy Statement and other notices at <https://www.ashtons.net/privacy-policy/>