

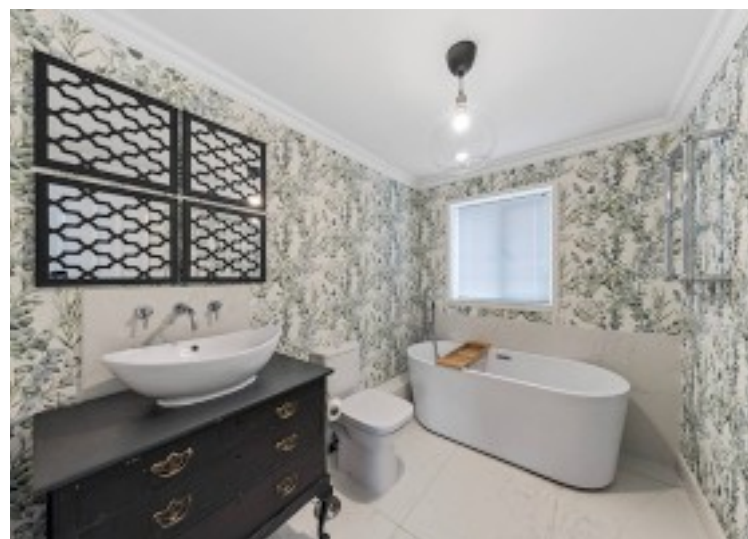
45 Stirrups Farm Road, Lowton

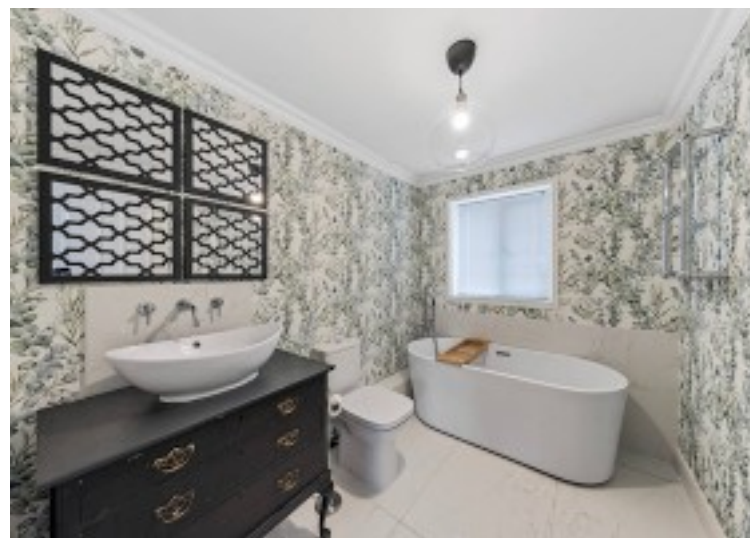
£400,000 Freehold



Scan For
More Information
About This Property.

Ashtons 

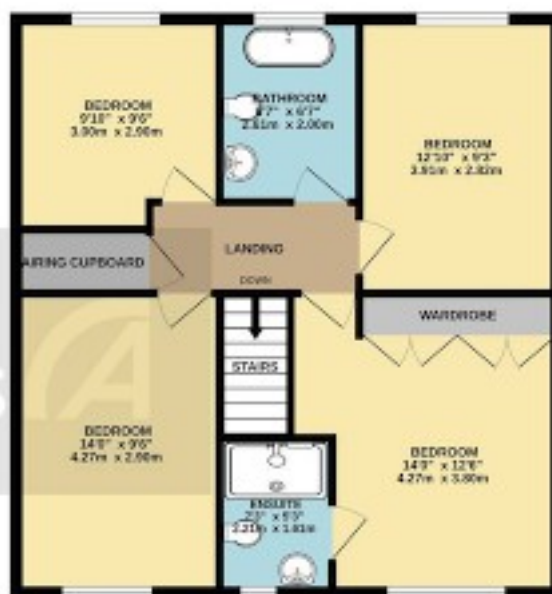




GROUND FLOOR
700 sq.ft. (65.0 sq.m.) approx.



1ST FLOOR
679 sq.ft. (63.1 sq.m.) approx.



TOTAL FLOOR AREA: 1379 sq.ft. (128.1 sq.m.) approx.

Whilst every attempt has been made to ensure the accuracy of the floorplan contained herein, measurements of doors, windows, rooms and any other items are approximate and no responsibility is taken for any error, omission or mis-statement. This plan is for illustrative purposes only and should be used as such by any prospective purchaser. The services, systems and appliances shown have not been tested and no guarantee as to their operability or efficiency can be given.
Made with Metaplan 00034

www.ashtons.net

You can include any text here. The text can be modified upon generating your brochure.

