

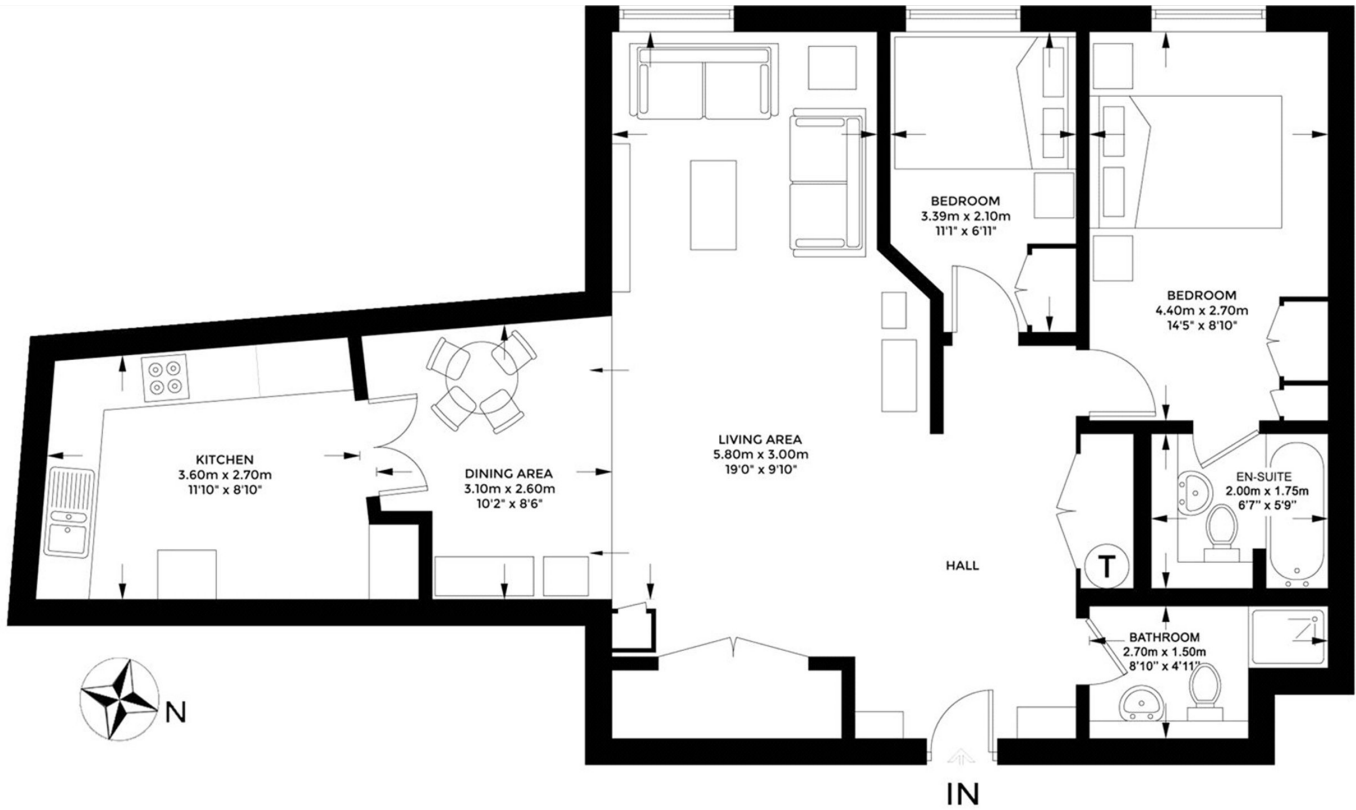


WHITEHOUSE APARTMENTS, SE1

£850,000

A spacious two bedroom, two bathroom apartment in the extremely popular Whitehouse Apartments to the market. This spacious apartment measuring approximately 837 Sq/ft in internal living space comprises a large living room, separate fully fitted kitchen and two generously sized double bedrooms.

- First Floor
- 837 Sq Ft
- Private Leisure Centre
- Swimming Pool
- 24hr Concierge
- Rooftop Terrace



FIRST FLOOR

Approximate Gross Internal Area = 77.81 sq m / 837.55 sq ft

All dimensions are estimates only and may not be exact measurements. Areas are approximate.

Floor plans and development plans are subject to change. The sketches, renderings, graphic materials, plans, specifics, terms, conditions and statements are proposed only, and the developer, the management company, the owners and other affiliates reserve the right to modify, revise or withdraw any or all of same in their sole discretion and without prior notice.

LiFE RESIDENTIAL

252 Westminster Bridge
Road, London, SE1 7PD
Sales: 020 7476 0125
Lettings: 020 7620 1600

Energy Rating: C. We aim to make our particulars both accurate and reliable. However they are not guaranteed; nor do they form part of an offer or contract. If you require clarification on any points then please contact us, especially if you're traveling some distance to view. Please note that appliances and heating systems have not been tested and therefore no warranties can be given as to their good working order.