



HINCHLIFFE  
HOLMES



22 ROOKERY DRIVE





#### **GROUND FLOOR**

Entrance Hall | Kitchen | Dining Room | Lounge  
Conservatory | Utility Room | WC

#### **FIRST FLOOR**

Landing | Bedroom One | Bedroom Two  
Bedroom Three | Bathroom

#### **OUTSIDE**

Parking | Garage | Gardens

# 22 ROOKERY DRIVE

Tattenhall | CH3 9QS

Situated in a popular sought-after quiet location within walking distance to the village centre and its amenities, an extended detached family home with scope for modernisation. Landscaped private gardens with views across open farmland, driveway providing off road parking and garage.

Tattenhall is a picturesque village situated within some of Cheshire's most glorious countryside with the nearby Cheshire Sandstone Ridge, Peckforton and Bickerton Hills, and Beeston and Peckforton Castles providing a stunning and dramatic backdrop.

Located in the Tattenhall Conservation Area, the property is within a short walk of the village centre which provides an excellent range of services and amenities including a general store, post office, chemist, doctors' surgery, dentist, veterinary practice, sports centre, public houses, restaurants, and a 'Good' OFSTED rated primary school.

The nearby A41 allows easy access into the historic city of Chester approximately 9 miles away and also provides a link to the A51, M53, and M56, facilitating travel to a number of commercial destinations within the North-West.







































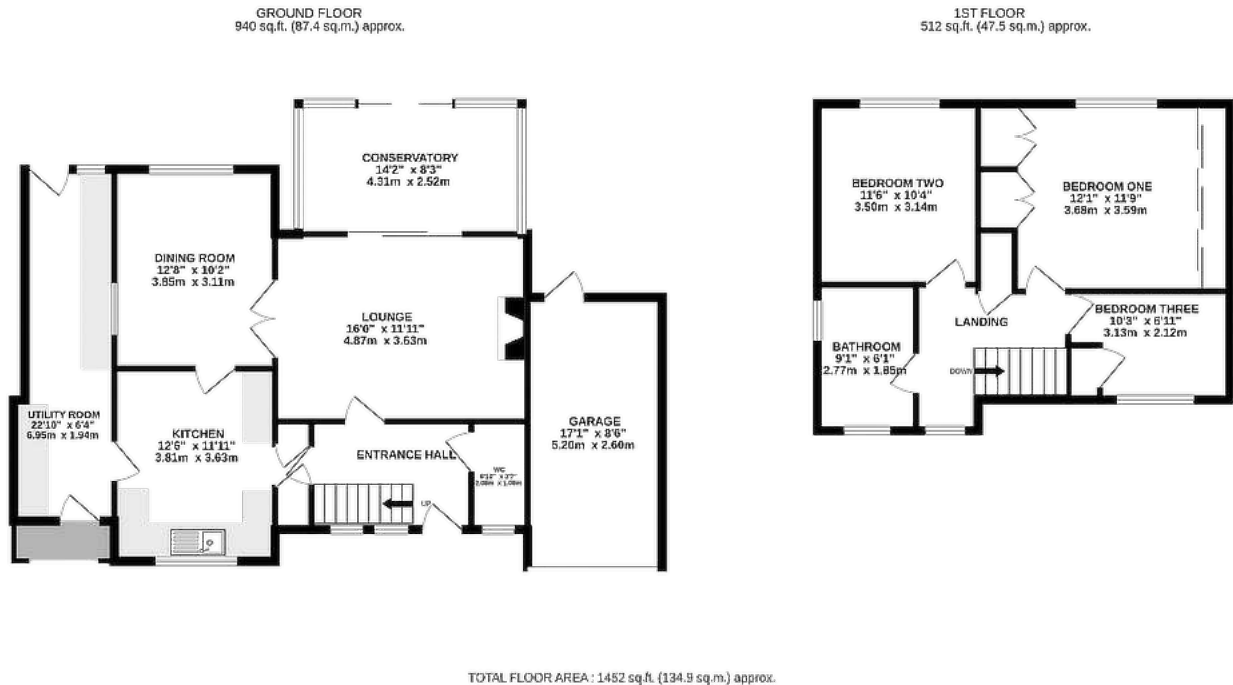












#### TENURE

Freehold. Subject to verification by Vendor's Solicitor.

#### SERVICES (NOT TESTED)

We believe that mains water, electricity, gas central heating and drainage are connected.

#### LOCAL AUTHORITY

Cheshire West And Chester. Council Tax – Band E.

#### POSSESSION

Vacant possession upon completion.

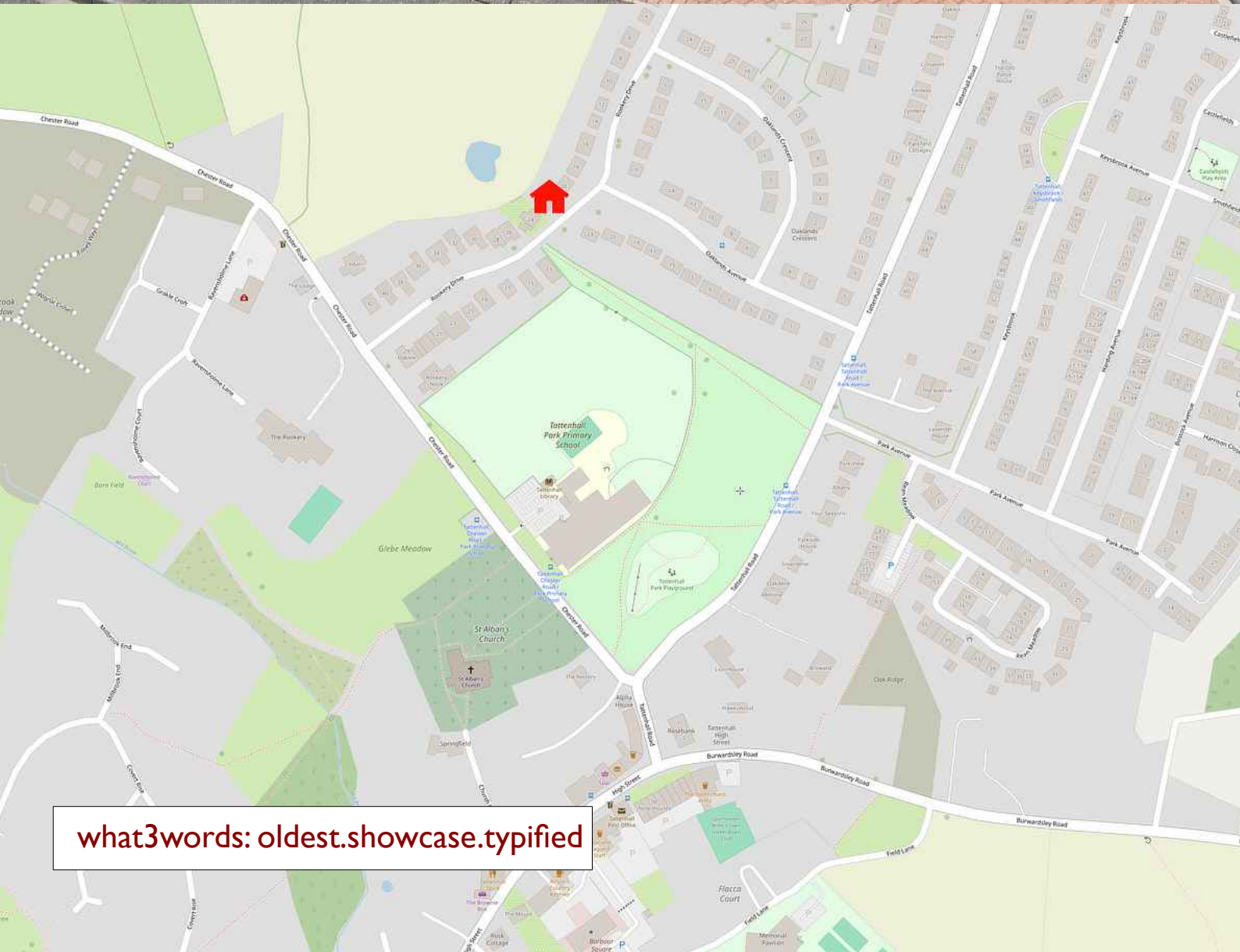
#### VIEWING

Viewing strictly by appointment through the Agents.

NOTICE: Hinchliffe Holmes for themselves and for the vendors or lessors of this property whose agents they are give notice that:

- (i) the particulars are set out as a general outline only for the guidance of intending purchasers or lessees, and do not constitute, nor constitute part of, an offer or contract;
- (ii) all descriptions, dimensions, references to condition and necessary permissions for use and occupation, and other details are given in good faith and are believed to be correct but any intending purchasers or tenants should not rely on them as statements or representations of fact but must satisfy themselves by inspection or otherwise as to the correctness of each of them;
- (iii) no person in the employment of Hinchliffe Holmes has any authority to make or give any representation or warranty whatever in relation to this property.
- (iv) Whilst every attempt has been made to ensure the accuracy of the floor plan contained here, measurements of doors, windows, rooms and any other items are approximate and no responsibility is taken for any error, omission, or mis-statement. This plan is for illustrative purposes only and should be used as such by any prospective purchaser. The services, systems and appliances shown have not been tested and no guarantee as to their operability or efficiency can be given.





what3words: oldest.showcase.typified





**Hinchliffe Holmes is an award winning independent family estate agency positioned in the heart of Cheshire with offices in Tarporley and Northwich.**

The business was founded with a passion for providing properties that are accessible to clients at all stages of their working and family lives. Most importantly it provides an exciting

approach to the property market meeting the personal needs of our clients.

Hinchliffe Holmes specialises in the sale of town and country properties, shaping its reputation on a bespoke level of quality advice, superb local knowledge and exceptional customer service, along with maximum exposure of all properties through our wide advertising and marketing ability.

## **EXCLUSIVE LISTINGS**

An Exclusive Listing is a home sale that is not listed on the open market and therefore it is sold off-market using more private and discrete methods.

Your home is one of a kind, the process of selling should be unique to you and your needs. Not all home sellers follow the traditional route when putting their home on the market. For some, an Exclusive Listing, can be the right method to sell their home.

## **LAND & NEW HOMES**

The team at Hinchliffe Holmes offer experienced and professional advice for the purchase and sale of land, property development and the purchase of newly built and developed property.

## **MORTGAGES**

The Hinchliffe Holmes team is committed to providing the best possible service and advice. Our team of skilled and caring advisors will guide you through the mortgage application, removing the stress and simplifying the whole process.

## **LETTINGS**

With our bespoke and personal approach, Hinchliffe Holmes has a tailored range of services to suit your needs as a Landlord. Our expert team will showcase your property to thousands of potential tenants each month.

## **PROPERTY MANAGEMENT**

With various service options to choose from, you can decide which package suits your requirements, and as an independent agent we can tailor-make each service for each landlord.

more than  
**30,000**  
viewings arranged

**£600 MILLION**  
worth of property sold

on average  
**99.1 %**  
of asking price  
achieved

**OVER 7,000 OFFERS**





UNITED KINGDOM  
**PROPERTY AWARDS**  
REAL ESTATE



ROLLS-ROYCE  
MOTOR CARS  
AUTHORISED DEALER  
P&A WOOD

★★★★★

BEST ESTATE AGENCY  
SINGLE OFFICE CHESHIRE

Hinchliffe Holmes

2021-2022



UNITED KINGDOM  
**PROPERTY AWARDS**  
REAL ESTATE




ROLLS-ROYCE  
MOTOR CARS  
AUTHORISED DEALER  
P&A WOOD

★★★★★


BEST ESTATE AGENCY  
CHESHIRE

Ben Hinchliffe

2022-2023



UNITED KINGDOM  
**PROPERTY AWARDS**  
REAL ESTATE



ROLLS-ROYCE  
MOTOR CARS  
AUTHORISED DEALER  
P&A WOOD

★★★★★

BEST ESTATE AGENCY  
SINGLE OFFICE  
CHESHIRE

Hinchliffe Holmes Ltd

2022-2023



UNITED KINGDOM  
**PROPERTY AWARDS**  
REAL ESTATE

★★★★★

BEST ESTATE AGENCY  
SINGLE OFFICE  
CHESHIRE

Hinchliffe Holmes

2023-2024



**TheNegotiator**  
*Awards 2022*

REGIONAL AGENCY  
OF THE YEAR  
NORTH EAST  
& NORTH WEST

**GOLD**



**BEST**  
ESTATE AGENT GUIDE  
AWARDS 2023

**WINNER**  
LETTINGS

AWARDED FOR  
MARKETING | SERVICE | RESULTS





**HINCHLIFFE  
HOLMES**

**INDEPENDENT ESTATE AGENTS**

**SALES | LETTINGS | MORTGAGES  
LAND & NEW HOMES | PROPERTY MANAGEMENT**

**TARPORLEY OFFICE**

56B High Street, Tarporley, Cheshire, CW6 0AG

01829 730 021 - [tarporley@hinchliffeholmes.co.uk](mailto:tarporley@hinchliffeholmes.co.uk)

**NORTHWICH OFFICE**

28 High Street, Northwich, Cheshire, CW9 5BJ

01606 330 303 - [northwich@hinchliffeholmes.co.uk](mailto:northwich@hinchliffeholmes.co.uk)

[www.hinchliffeholmes.co.uk](http://www.hinchliffeholmes.co.uk)