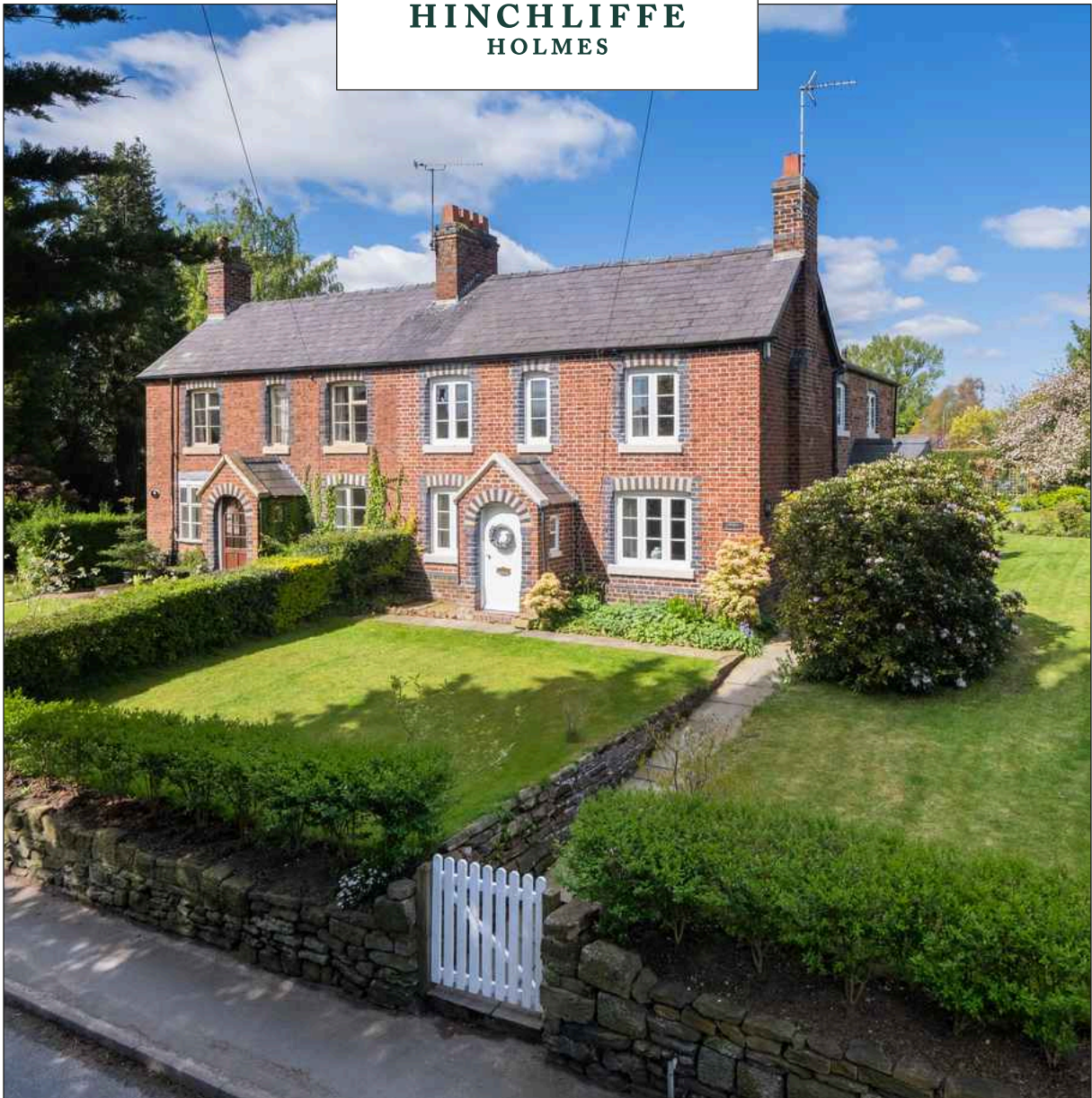


DAISY BANK

Church Road | Ashton | CH3 8AB



HINCHLIFFE
HOLMES



Situated in a sought-after picturesque village location and set in an elevated position, a beautifully presented, extended, and fully renovated semi-detached family home with superb flexible accommodation and many character features throughout. Beautifully landscaped private gardens and driveway providing off-road parking for several vehicles.



DAISY BANK

Situated in a sought-after picturesque village location and set in an elevated position, a beautifully presented, extended, and fully renovated semi-detached family home with superb flexible accommodation and many character features throughout. Beautifully landscaped private gardens and driveway providing off-road parking for several vehicles.

Ashton is a quaint picturesque village and enjoys many amenities including a community run village store offering general convenience items and post office, a church, a 'good' Ofsted rated primary school, and an 'outstanding' Ofsted rated nursery. Additionally, the village has a playground and community room for hire.

Close by, the village of Mouldsworth offers further amenities including the Goshawk Public House and

Mouldsworth Railway Station which provides a direct link on the Chester to Manchester line.

Furthermore, just over a mile away is the popular village of Tarvin. Tarvin is an increasingly popular village and is located 6 miles from Chester and 5 miles from Tarporley. In recent times the village has been the subject of an impressive scheme of improvement and boasts an excellent range of day-to-day amenities including Co-op store, two churches, newsagents, four public houses/restaurants and individual retail outlets. There is also within the village a doctors' surgery and good Ofsted primary school.

Chester City centre can be reached within 15 - 20 minutes and there are great links to the wider motorway network via the A55, M6, M56 and M53.

GROUND FLOOR

Entrance Hall
Lounge
Sitting Room
Dining Room
Kitchen
Utility Room
Study
Rear Hall
WC

FIRST FLOOR

Landing
Bedroom One
Bedroom Two

Bedroom Three
Bedroom Four
Bathroom

OUTSIDE

Cobbled Parking Area
Gardens
WC





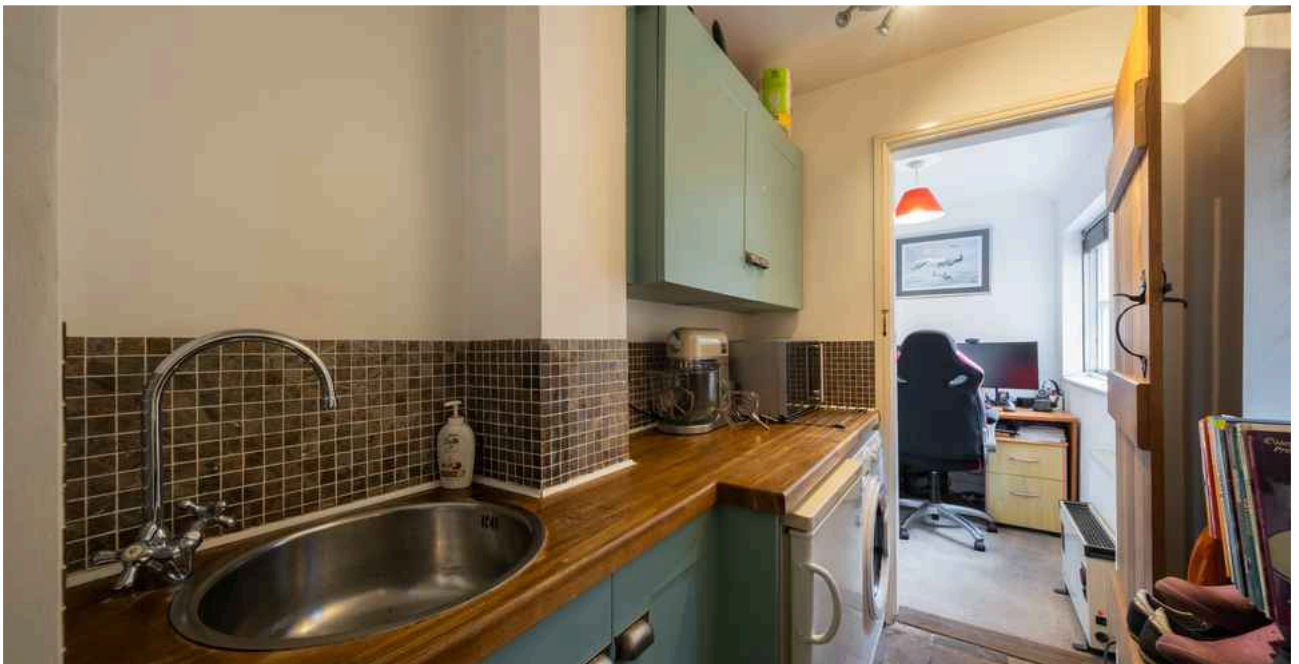














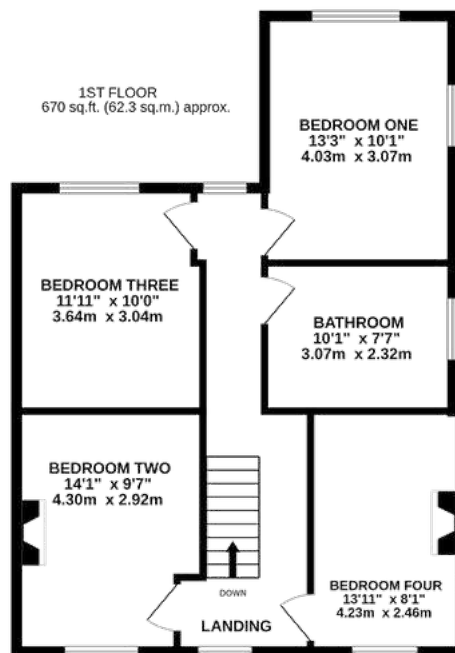
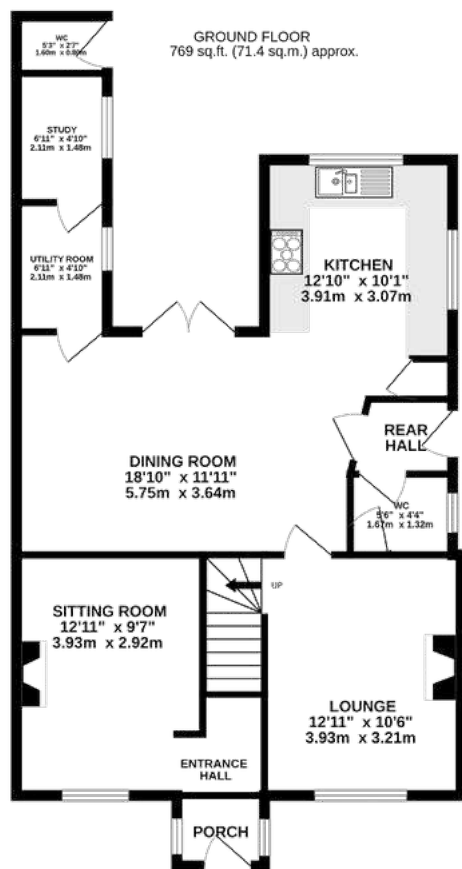












TOTAL FLOOR AREA: 1439 sq.ft. (133.7 sq.m.) approx.



TENURE

Freehold. Subject to verification by Vendor's Solicitor.

SERVICES (NOT TESTED)

We believe that mains water, electricity, gas central heating and drainage are connected.

LOCAL AUTHORITY

Cheshire West And Chester. Council Tax – Band C.

POSSESSION


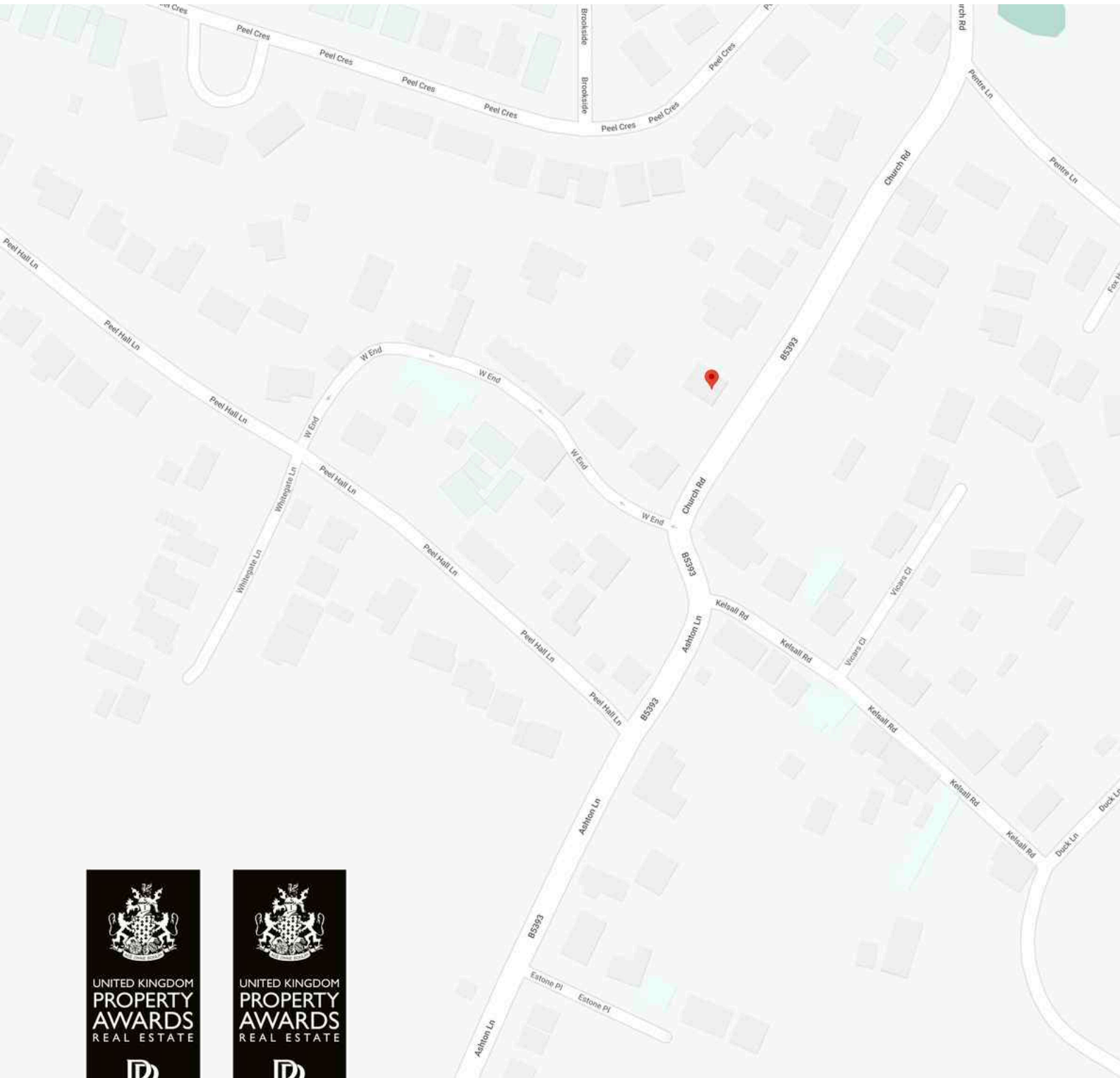
Vacant possession upon completion.

VIEWING


Viewing strictly by appointment through the Agents.

NOTICE: Hinchliffe Holmes for themselves and for the vendors or lessors of this property whose agents they are give notice that:

- (i) the particulars are set out as a general outline only for the guidance of intending purchasers or lessees, and do not constitute, nor constitute part of, an offer or contract;
- (ii) all descriptions, dimensions, references to condition and necessary permissions for use and occupation, and other details are given in good faith and are believed to be correct but any intending purchasers or tenants should not rely on them as statements or representations of fact but must satisfy themselves by inspection or otherwise as to the correctness of each of them;
- (iii) no person in the employment of Hinchliffe Holmes has any authority to make or give any representation or warranty whatever in relation to this property.
- (iv) Whilst every attempt has been made to ensure the accuracy of the floor plan contained here, measurements of doors, windows, rooms and any other items are approximate and no responsibility is taken for any error, omission, or mis-statement. This plan is for illustrative purposes only and should be used as such by any prospective purchaser. The services, systems and appliances shown have not been tested and no guarantee as to their operability or efficiency can be given.



UNITED KINGDOM
PROPERTY
AWARDS
REAL ESTATE




ROLLS-ROYCE
MOTOR CARS
AUTHORISED DEALER
PEA WOOD

★★★★★


BEST ESTATE AGENCY
SINGLE OFFICE
CHESHIRE

Hinchliffe Holmes Ltd

2022-2023



UNITED KINGDOM
PROPERTY
AWARDS
REAL ESTATE



ROLLS-ROYCE
MOTOR CARS
AUTHORISED DEALER
PEA WOOD

★★★★★

BEST ESTATE AGENT
CHESHIRE

Ben Hinchliffe

2022-2023



The **Negotiator**
Awards 2022

**REGIONAL AGENCY
OF THE YEAR
NORTH EAST
& NORTH WEST**



GOLD



BEST
ESTATE AGENT GUIDE
AWARDS 2023
WINNER
LETTINGS

AWARDED FOR
MARKETING | SERVICE | RESULTS

LETTINGS

With our bespoke and personal approach, Hinchliffe Holmes has a tailored range of services to suit your needs as a Landlord. Our expert team will showcase your property to thousands of potential tenants each month.



Let Only
Rent Collect
Managed
Complete Managed

MORTGAGES

The Hinchliffe Holmes team is committed to providing the best possible service and advice. Our team of skilled and caring advisors will guide you through the mortgage application, removing the stress and simplifying the whole process.




Remortgage
Commercial - Buy-to-let
First time Buyer - Next Time Buyer
Fixed Rate - Flexible - Tracker - Discounted

LAND & NEW HOMES

The team at Hinchliffe Holmes offer experienced and professional advice for the purchase and sale of land, property development and the purchase of newly built and developed property.





An Exclusive Listing is a home sale that is not listed on the open market and therefore it is sold off-market using more private and discrete methods.

EXCLUSIVE LISTINGS

Your home is one of a kind, the process of selling should be unique to you and your needs. Not all home sellers follow the traditional route when putting their home on the market. For some, an Exclusive Listing, can be the right method to sell their home.



**HINCHLIFFE
HOLMES**

INDEPENDENT ESTATE AGENTS

**SALES | LETTINGS | MORTGAGES
LAND & NEW HOMES | PROPERTY MANAGEMENT**

TARPORLEY OFFICE

56B High Street, Tarporley, Cheshire, CW6 0AG
01829 730 021 - tarporley@hinchliffeholmes.co.uk

NORTHWICH OFFICE

28 High Street, Northwich, Cheshire, CW9 5BJ
01606 330 303 - northwich@hinchliffeholmes.co.uk

www.hinchliffeholmes.co.uk