

15 HEATH DRIVE

Tarvin | CH3 8EZ



**HINCHLIFFE
HOLMES**



Situated in a popular quiet village location within walking distance to amenities and set on a corner position, an extended detached family home with versatile accommodation and scope for modernisation. Private landscaped gardens, driveway providing off road parking and garage.



15 HEATH DRIVE

Situated in a popular quiet village location within walking distance to amenities and set on a corner position, an extended detached family home with versatile accommodation and scope for modernisation. Private landscaped gardens, driveway providing off road parking and garage.

Tarvin is an increasingly popular village and is located 6 miles from Chester and 5 miles from Tarporley. In recent times the village has been the subject of an impressive scheme of improvement and boasts an excellent range of day-to-day amenities including Co-op store, two churches, newsagents, four public houses/restaurants and individual retail outlets. There is also within the village a doctors' surgery and good Ofsted primary school.

For further amenities close by the award-winning village of Tarporley, is renowned for its Historic High Street which is located approximately 12 miles from Chester and offers a superb range of amenities including fashion boutiques, art galleries, DIY, florists, butcher, hairdressers, chemist, hospital, petrol station and other general stores. There is also a range of pleasant restaurants and public houses, which complete the thriving village. Additionally, Tarporley has the added benefit of two highly regarded Golf courses. Tarporley has its own two churches and both a primary and a secondary school which has an 'Outstanding' Ofsted report. There is easy access to the surrounding villages, motorway and railway networks, which give access to the north and south of the UK.

GROUND FLOOR

Entrance Hall
Lounge
Dining Room
Kitchen
Bedroom Four
Bathroom

FIRST FLOOR

Landing
Bedroom One
Bedroom Two
Bedroom Three
Bathroom

OUTSIDE

Garage
Parking
Gardens













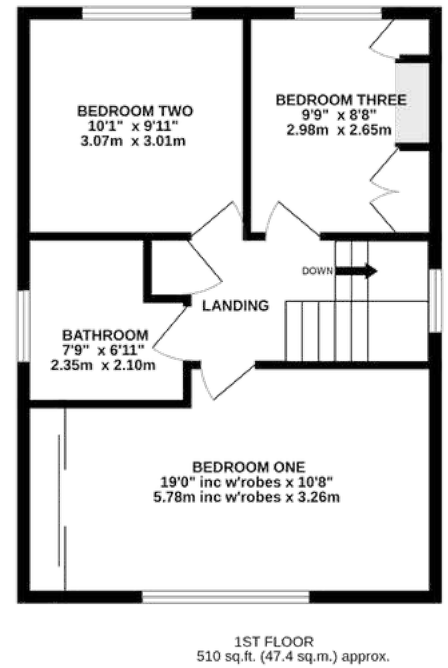
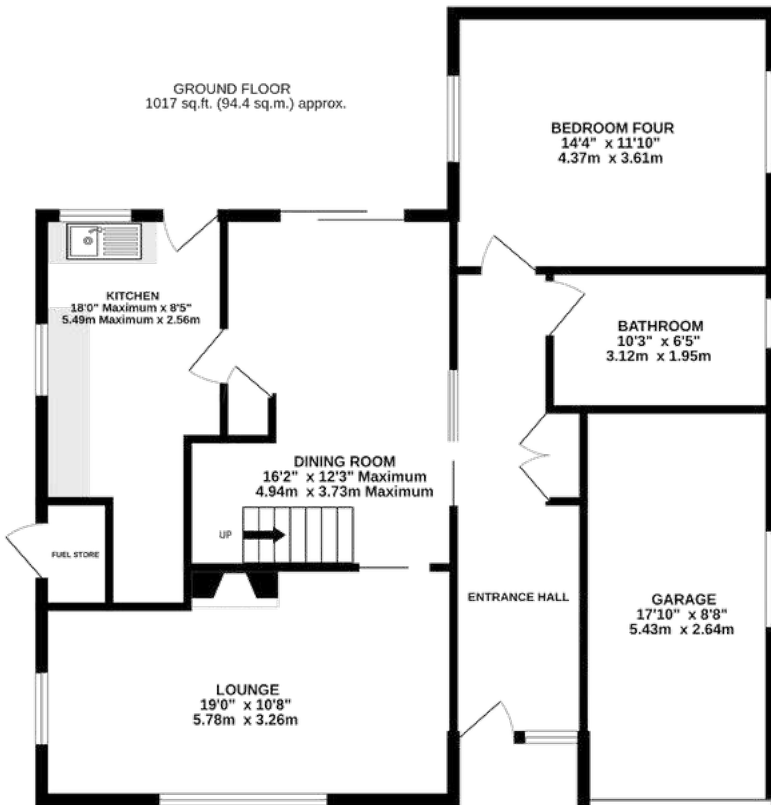












TOTAL FLOOR AREA : 1526 sq.ft. (141.8 sq.m.) approx.



TENURE

Freehold. Subject to verification by Vendor's Solicitor.

SERVICES (NOT TESTED)

We believe that mains water, electricity, gas central heating and drainage are connected.

LOCAL AUTHORITY

Cheshire West And Chester. Council Tax – Band D.

POSSESSION

Vacant possession upon completion.

VIEWING

Viewing strictly by appointment through the Agents.

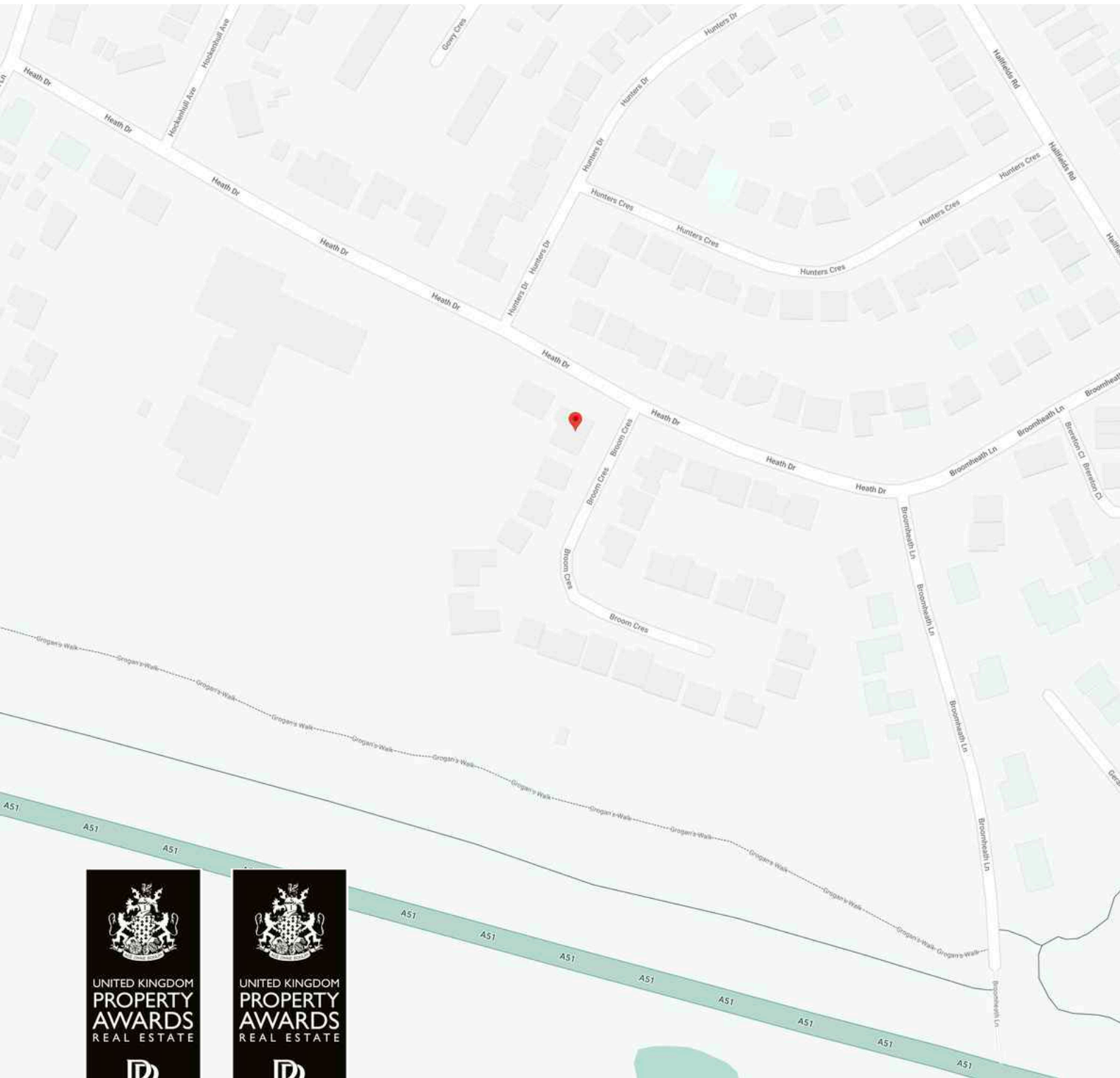
NOTICE: Hinchliffe Holmes for themselves and for the vendors or lessors of this property whose agents they are give notice that:


(i) the particulars are set out as a general outline only for the guidance of intending purchasers or lessees, and do not constitute, nor constitute part of, an offer or contract;


(ii) all descriptions, dimensions, references to condition and necessary permissions for use and occupation, and other details are given in good faith and are believed to be correct but any intending purchasers or tenants should not rely on them as statements or representations of fact but must satisfy themselves by inspection or otherwise as to the correctness of each of them;

(iii) no person in the employment of Hinchliffe Holmes has any authority to make or give any representation or warranty whatever in relation to this property.

(iv) Whilst every attempt has been made to ensure the accuracy of the floor plan contained here, measurements of doors, windows, rooms and any other items are approximate and no responsibility is taken for any error, omission, or mis-statement. This plan is for illustrative purposes only and should be used as such by any prospective purchaser. The services, systems and appliances shown have not been tested and no guarantee as to their operability or efficiency can be given.






 UNITED KINGDOM
PROPERTY AWARDS
 REAL ESTATE


ROLLS-ROYCE
 MOTOR CARS
 AUTHORISED DEALER
 PEA WOOD

★ ★ ★ ★ ★
 BEST ESTATE AGENCY
 SINGLE OFFICE
 CHESHIRE

Hinchliffe Holmes Ltd
 2022-2023


 UNITED KINGDOM
PROPERTY AWARDS
 REAL ESTATE


ROLLS-ROYCE
 MOTOR CARS
 AUTHORISED DEALER
 PEA WOOD

★ ★ ★ ★ ★
 BEST ESTATE AGENT
 CHESHIRE

Ben Hinchliffe
 2022-2023

The Negotiator
Awards 2022
**REGIONAL AGENCY
 OF THE YEAR
 NORTH EAST
 & NORTH WEST**

GOLD

BEST
 ESTATE AGENT GUIDE
AWARDS 2023
WINNER
LETTINGS

AWARDED FOR
 MARKETING | SERVICE | RESULTS

LETTINGS

With our bespoke and personal approach, Hinchliffe Holmes has a tailored range of services to suit your needs as a Landlord. Our expert team will showcase your property to thousands of potential tenants each month.



Let Only
Rent Collect
Managed
Complete Managed

MORTGAGES

The Hinchliffe Holmes team is committed to providing the best possible service and advice. Our team of skilled and caring advisors will guide you through the mortgage application, removing the stress and simplifying the whole process.



Remortgage
Commercial - Buy-to-let
First time Buyer - Next Time Buyer
Fixed Rate - Flexible - Tracker - Discounted

LAND & NEW HOMES

The team at Hinchliffe Holmes offer experienced and professional advice for the purchase and sale of land, property development and the purchase of newly built and developed property.





An Exclusive Listing is a home sale that is not listed on the open market and therefore it is sold off-market using more private and discrete methods.

EXCLUSIVE LISTINGS

Your home is one of a kind, the process of selling should be unique to you and your needs. Not all home sellers follow the traditional route when putting their home on the market. For some, an Exclusive Listing, can be the right method to sell their home.



**HINCHLIFFE
HOLMES**

INDEPENDENT ESTATE AGENTS

**SALES | LETTINGS | MORTGAGES
LAND & NEW HOMES | PROPERTY MANAGEMENT**

TARPORLEY OFFICE

56B High Street, Tarporley, Cheshire, CW6 0AG
01829 730 021 - tarporley@hinchliffeholmes.co.uk

NORTHWICH OFFICE

28 High Street, Northwich, Cheshire, CW9 5BJ
01606 330 303 - northwich@hinchliffeholmes.co.uk

www.hinchliffeholmes.co.uk