

The survey has been produced at the surveyor's scale detailed below with its accuracy commensurate with the indicated scale and should only be used for its original intended purpose. Any building should only be constructed using a stable mass and produced using the original data. The printed scale may vary from the survey scale.

It is for the use only of the party to whom it has been submitted and no responsibility is accepted to any third party for the whole or part of its contents. This survey has been prepared on the basis that all information and facts, which may affect the survey, have been disclosed to Formby Surveys Ltd by all parties concerned and no liability, nor responsibility can be accepted, unless full disclosure has been made.

All ground features that were visible at the time of the survey have been located, however there may have been some obscured. Pipe sizes and flow direction have been visually assessed from the surface and should be considered as approximate only.

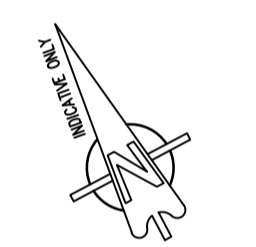
An error remains in the data provided by Formby Surveys Ltd and any discrepancies between this survey and any other information should be reported to Formby Surveys Ltd.

Measured Building Legend



Abbreviations

Table of abbreviations including A (Alarm), ACU (Air Conditioning Unit), AH (Access Hatch), AP (Access Panel), AS (Aerial Socket), AV (Air Valve), BC (Building Canopy), BH (Beam Height), BHL (Beam Head Level), BSL (Beam Soffit Level), BM (Bench Mark), BNDY (Boundary), BO (Boulder), BT (British Telecom Manhole), BW (Brick Wall), CCTV (Circuit Television), C-H (Cill to Head Height), CH (Ceiling Height), CL (Ceiling Level), COL (Column), CR (Cycle Rack), CTV (Cable Television Manhole), CUL (Culvert), DF (Drinking Fountain), DPC (Damp Proof Course), D (Drain), DH (Door Height), DL (Door Level), EB (Electricity Box), EL (Electricity Manhole), EM (Electricity Meter), EP (Electricity Pole), ER (Earthing Rod), FA (Fire Alarm), FB (Flower Bed), F-C (Floor to Cill Height), F-H (Floor to Head Height), FCL (False Ceiling Level), FFL (Finished Floor Level), FL (Floor Level), FMH (Foul Water Manhole), FS** (Foul Water Survey Station), FX (Fire Extinguisher), GAS (Gas Valve), WL (Waste Level), GM (Gas Meter), CU (Culvert), H (Height), HE (Heater), HB (Horse Box), HY (Hydrant), IB (Isolation Board), IC (Inspection Chamber), IS (Information Sign), ISW (Isolation Switch), IT (Intercom), JTB (Junction Box), LV (Low Voltage Elec.), MCU (Media Control Unit), ME (Meter Manhole), MH (Manhole), MK (Marker), NB (Notice Board), NF** (Additional Survey Station), NI (Road Name Plate), OB (Out Building), OS (Ordnance Survey), P (Post), PO (Post Office Manhole), PI (Pipe), PD (Post), PP (Power Point), RP (Radiator), RE (Ridding Eye), RTW (Retaining Wall), RWP (Rainwater Pipe), SPP (Sewer Pipe), SK (Soakaway), SH (Sight), SOF (Soffit Level), SWM (Storm Water Manhole), ST (Stop Tap), SV (Stop Valve), SVP (Soil Vent Pipe), SW (Surface Water), TBM (Temporary Benchmark), TH (Threshold Level), TOW (Top of Wall), TP (Telephone Point), TPT (Trail Pit), TS (Thermostat), UTR (Unable To Raise), VEP (Vent Pipe), WCL (Window Cill Level), WHL (Window Head Level), WM (Water Meter), WL (Waste Level), WP (Waste Pipe), WT (Water Tap), WV (Walk Vene)



Grid & Datum

Survey Grid: Local Grid [] Nat. Grid [] Existing Grid []
Survey Datum: Local Datum [] Nat. Grid [] O.S.B.M. []

The survey grid and level datum relate to an arbitrary local grid orientated to north via compass bearing.

General Notes

- 1. All arrows on stairs, steps & ramps etc indicate an UP direction unless otherwise stated.
- 2. Door sizes are measured as the "moving part" of the door.

Rev	Date	Description	CAD
-----	------	-------------	-----

Client: Gainmill

measure manage deliver
Formby Surveys
Professional Measurement Surveyors

Formby Surveys Ltd T +44 (0)151 329 3040
The Hayes Building F +44 (0)151 329 3140
15-18 Johnson Street E info@formbysurveys.com
Liverpool W www.formbysurveys.com
L3 2BQ

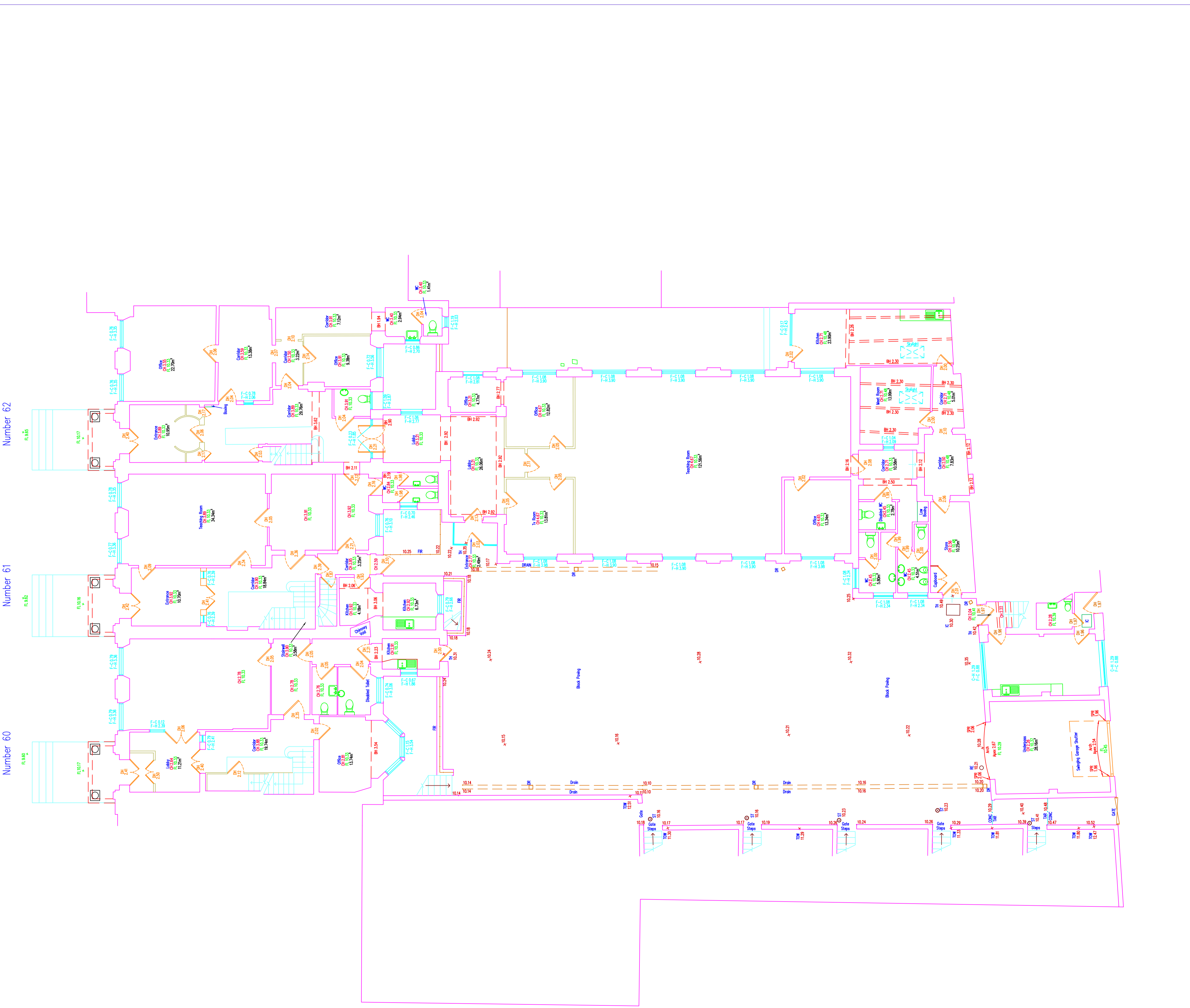


Ground Floor Plan

Gainmill House,
Birkenhead, CH41 5AT

Plotted Scale: A1@1:100 0.0 2.0 4.0 6.0m
NB: Survey Scale: 1:100

Surveyor: AR/NT/DL CAD: DW Checker: MILS Rev:
Date of Issue: March 2020 FSL Ref No: 10801_G:100:1:1



Number 62

Number 61

Number 60