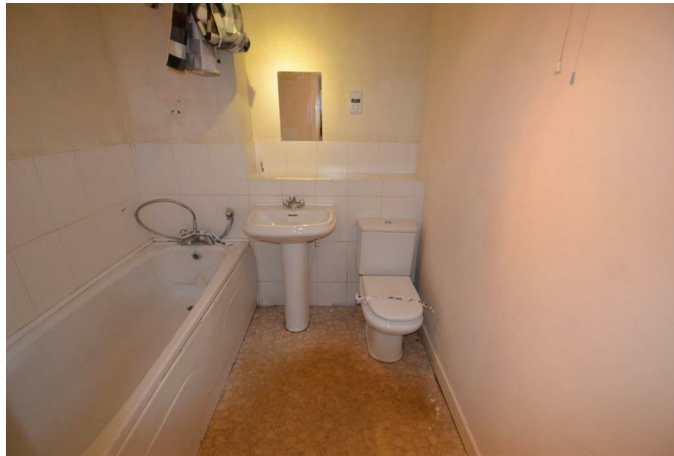




HUNTERS[®]

HERE TO GET *you* THERE

Hevingham Drive, Romford, Essex, RM6 4UA | £1,600 Per Calendar Month
Call us today on 020 7474 2345



Score	Energy rating	Current	Potential
92+	A		
81-91	B	84 B	86 B
69-80	C		
55-68	D		
39-54	E		
21-38	F		
1-20	G		

Thinking of Selling?

If you are thinking of selling your home or just curious to discover the value of your property, Hunters would be pleased to provide free, no obligation sales and marketing advice. Even if your home is outside the area covered by our local offices we can arrange a Market Appraisal through our national network of Hunters estate agents.

Guide Price: £1,600PCM - £1,700PCM

Positioned on the 2nd floor of this purpose built block is this lovely two bedroom apartment in the borough of Redbridge. Boasting a bright and airy feel throughout. Allocated Parking.

Located excellently for Chadwell Heath and Goodmayes station. The property is also in close proximity to Grove primary school and Chadwell Heath Academy (both Ofsted outstanding). Available Now!

These particulars are intended to give a fair and reliable description of the property but no responsibility for any inaccuracy or error can be accepted and do not constitute an offer or contract. We have not tested any services or appliances (including central heating if fitted) referred to in these particulars and the purchasers are advised to satisfy themselves as to the working order and condition. If a property is unoccupied at any time there may be reconnection charges for any switched off/disconnected or drained services or appliances - All measurements are approximate.

272 Barking Road, Plaistow, E13 8HR | 020 7474 2345 | plaistow@hunters.com

HUNTERS[®]
HERE TO GET *you* THERE