



19 Withers Road | £400,000
Romsey, Hampshire, SO51 0AY





19 Withers Road
Romsey, Hampshire, SO51 0AY

01794 521339 / 02382 541100
homes@henshawfox.co.uk
www.henshawfox.co.uk

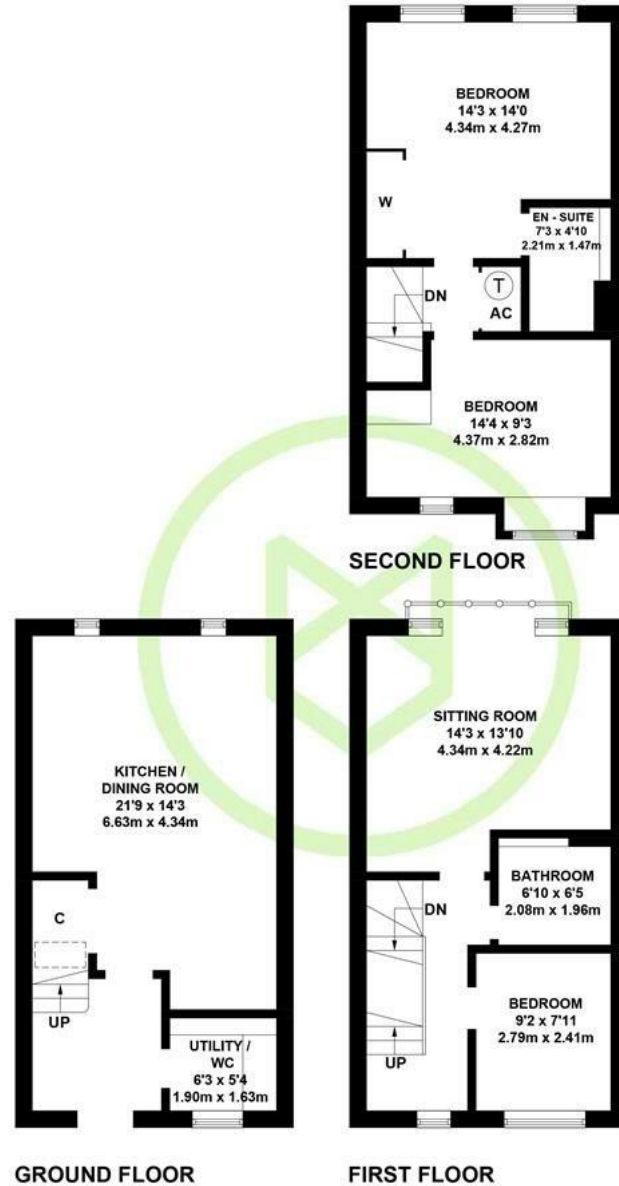


Summary

A stunning end of terrace townhouse, situated on the desirable Abbotswood development in Romsey. The home features three good size bedrooms, en-suite shower room, family bathroom, open plan kitchen/dining area, sitting room with Juliet balcony and useful downstairs cloakroom/utility area. Outside, the home benefits from a low maintenance South facing rear garden and allocated parking for two vehicles.

Summary

- A modern end of terrace townhouse
- Open plan kitchen/dining area
- Flexible sitting room with Juliet balcony
- Allocated parking for two vehicles
- South facing rear garden
- Situated on the desirable Abbotswood development



GROUND FLOOR

FIRST FLOOR

APPROXIMATE GROSS INTERNAL AREA
GROUND FLOOR = 397 SQ FT / 36.9 SQ M
FIRST FLOOR = 398 SQ FT / 37.0 SQ M
SECOND FLOOR = 395 SQ FT / 36.7 SQ M
TOTAL = 1190 SQ FT / 110.6 SQ M

Illustration for identification purposes only,
measurements are approximate, not to scale. (ID1092168)

EPC Rating

Energy Efficiency Rating
Current B
Potential A

19 Withers Road

Romsey, Hampshire, SO51 0AY

Ground Floor

Upon entry, the inviting entrance hall allows access for the kitchen/dining area, stairs to the first floor landing and cloakroom/utility which features a WC, wash basin and plumbing for washing machine. The open plan kitchen/dining area is an expansive room with double doors out to the rear garden and useful under stairs storage cupboard. The kitchen has a selection of wall and base storage units and built in appliances which include fridge/freezer, dishwasher, oven, hob and extractor above.

First Floor

The first floor landing provides access for the sitting room, family bathroom and bedroom three. Currently set up as an additional bedroom, the sitting room has ample space for seating furniture and Juliet balcony overlooking the rear aspect. The family bathroom features a shower over bath, WC and wash basin. Bedroom three is an ample single or perfect study space.

Second Floor

The second floor landing provides access for the principal bedroom, bedroom two and useful storage cupboard. The principal bedroom is a generous double with built in wardrobes and en-suite comprising walk in shower, WC and wash basin. Bedroom two is a spacious double overlooking the front aspect.

Outside

Complimented by it's South facing aspect, the low maintenance rear garden features a spacious adjoining patio area perfect for outdoor seating or dining, area of lawn and gate leading to the driveway to the front.

Parking

Allocated parking for two vehicles

Location

Withers Road is located in Abbotswood, a district situated in the north east of Romsey. A modern development with a growing community of residents, this pleasant and very popular area includes park areas, a nature reserve and as the development has grown, sports areas, a Co-op and other essential amenities have more recently been added including a fish & chip shop, Indian takeaway and a salon.

Tenure

Freehold

Sellers Position

Found onward purchase

Heating

Gas central heating

Infant and Junior School

Cupernham Infant and Junior School

Secondary School

The Romsey Academy

Council Tax

Test Valley - Band D

Terms and Conditions

These particulars are set out as a general outline and do not constitute any part of an offer or contract. We have not tested any services, appliances or equipment and no warranty is given or implied that these are in working order. Fixtures, fittings and furnishings are included unless specifically described. All measurements, floor plans, distances and areas are approximate and for guidance only. It should not be assumed that the property remains the same as shown in the photographs.

01794 521339 / 02382 541100

homes@henshawfox.co.uk

www.henshawfox.co.uk

