



9 St. Christophers Close | £349,000
North Baddesley, Hampshire, SO52 9NZ





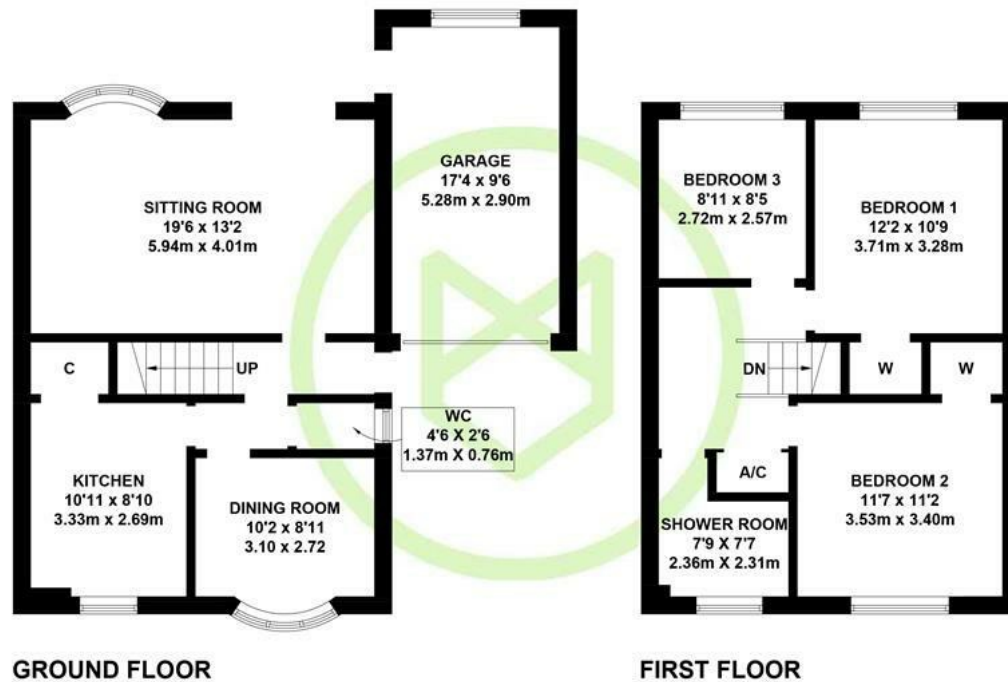
9 St. Christophers Close
North Baddesley, Hampshire, SO52 9NZ

01794 521339 / 02382 541100
homes@henshawfox.co.uk
www.henshawfox.co.uk



Summary

Positioned within a quiet cul-de-sac in the desirable Village of North Baddesley, this well presented semi-detached house is offered with no onward chain. The home features three bedrooms, family shower room, spacious sitting room, seperate dining room, kitchen and downstairs WC. Outside, the home benefits from a secluded rear garden, garage and driveway.



APPROXIMATE GROSS INTERNAL AREA
GROUND FLOOR = 540 SQ FT / 50.2 SQ M
FIRST FLOOR = 528 SQ FT / 49.1 SQ M
GARAGE = 167 SQ FT / 15.5 SQ M
TOTAL = 1235 SQ FT / 114.8 SQ M
Illustration for identification purposes only,
measurements are approximate, not to scale. (ID1132090)

Features

- Offered with no onward chain
- Well presented semi-detached house
- Three bedrooms
- Private rear garden
- Driveway and garage
- Situated in the desirable Village of North Baddesley

EPC Rating

Energy Efficiency Rating
Current C
Potential B

9, St. Christophers Close, North Baddesley, Hampshire, SO52 9NZ

Ground Floor

Upon entry, the entrance hall provides access for the sitting room, cloakroom comprising WC and wash basin, dining room and kitchen. Situated at the rear of the home, the spacious sitting room has a large bay window and sliding door leading out to the rear garden. The dining room has ample space for dining table with chairs and bay onlooking the front aspect. The kitchen has an array of wall and base storage units, useful breakfast bar, larder cupboard, plumbing for washing machine, space for under counter fridge, under counter freezer and oven with hob and extractor above.

First Floor

The first floor landing allows access for all three bedrooms, family shower room and airing cupboard. The principal bedroom is a spacious double with useful built in wardrobe. Bedroom two is also a double with built in wardrobe. Bedroom three is a large single or perfect study space. The family shower room features walk in shower, WC, heated towel rail and wash basin.

Outside

The secluded rear garden has a large adjoining patio, area of lawn, selection of mature shrubs and door into the rear of the garage.

Parking

Driveway parking leading to garage with up and over door.

Location

St. Christophers Close is a desirable location in the quiet village of North Baddesley, located to the south east of Romsey and a short distance to Chandlers Ford. It benefits from excellent transport routes to Southampton, fantastic local schooling and various local amenities

Tenure

Freehold

Sellers Position

No onward chain

Heating

Gas

Infant and Junior School

North Baddesley Infant and Junior School

Secondary School

The Mountbatten School

Council Tax

Test Valley - Band D

Terms and Conditions

These particulars are set out as a general outline and do not constitute any part of an offer or contract. We have not tested any services, appliances or equipment and no warranty is given or implied that these are in working order. Fixtures, fittings and furnishings are included unless specifically described. All measurements, floor plans, distances and areas are approximate and for guidance only. It should not be assumed that the property remains the same as shown in the photographs.

01794 521339 / 02382 541100

homes@henshawfox.co.uk

www.henshawfox.co.uk

